



Solano County Jail Behavioral Health Unit

Presented to the Solano County Board of Supervisors
on June 10, 2025
Solano County Sheriff's Office



What is a Behavioral Health Unit?

- Step-up/step-down housing units for incarcerated persons diagnosed with a mental health condition and/or who exhibit behavioral patterns that hinder their ability to function effectively within the general population.
- Provides specialized attention and support which includes enhanced monitoring, programming, and therapeutic interventions to help manage mental health conditions and adapt to the structured environment of the jail setting.
- A Behavioral Health Unit, an industry best practice, creates a positive change for incarcerated persons and our agency.





Behavioral Health Unit





Mental Illness in Solano County Jails

- Available data dating back to 2019 reflects that the percentage of the mental health population in Solano County Jails ranged from 34% up to 59% of the total jail population.
 - As of May 2025, approximately 55% of the Solano County jail population is identified as a mental health patient.
-
- Many mental health patients require more attention than a standard housing unit can accommodate, likely contributing to:
 - Unsanitary/unhygienic cell conditions
 - Behavioral escalation and use of force
 - Higher Classification levels
-
- Common mental health symptoms that require frequent intervention include:
 - Hallucinations
 - Delusions and paranoia
 - Agitation
 - Bipolar mania
 - Anxiety and panic attacks
 - Major Depression



Positive Impact for the Sheriff's Office

- Reduced tension in the General Population housing units
- Increased out-of-cell time and socialization opportunities for:
 - Inmates assigned to the BHU
 - The minimal number of ADSEP/GENSEP inmates still assigned to regular housing
 - The General Population (GP)
- Expanded services, intervention, and rehabilitation
- Efforts to reduce recidivism
- Reduction in staff assaults
- Enhanced work environment for staff
- Efforts to reduce self-harming acts and suicidal ideations
- Building rapport between inmates and staff





Behavioral Health Classification Statuses

Four (4) new classification statuses have been developed to separate and categorize different levels of behavioral health incarcerated persons to foster healthy and effective programming.

▪ **BH1**

- Mild to moderate psychiatric symptoms
- Medication compliant and stable
- Able to dual house
- Participates in group and program opportunities

▪ **BH3**

- Most acute/severe psychiatric symptoms
- May resist medication
- Unpredictable/unstable/violent
- Ineligible for dual housing

▪ **BH2**

- Moderate to severe psychiatric symptoms
- Full medication compliance is encouraged, but not typically expected
- Dual housing will vary on a case-by-case basis; most will house alone

▪ **BHA** (Behavioral Health Assessment)

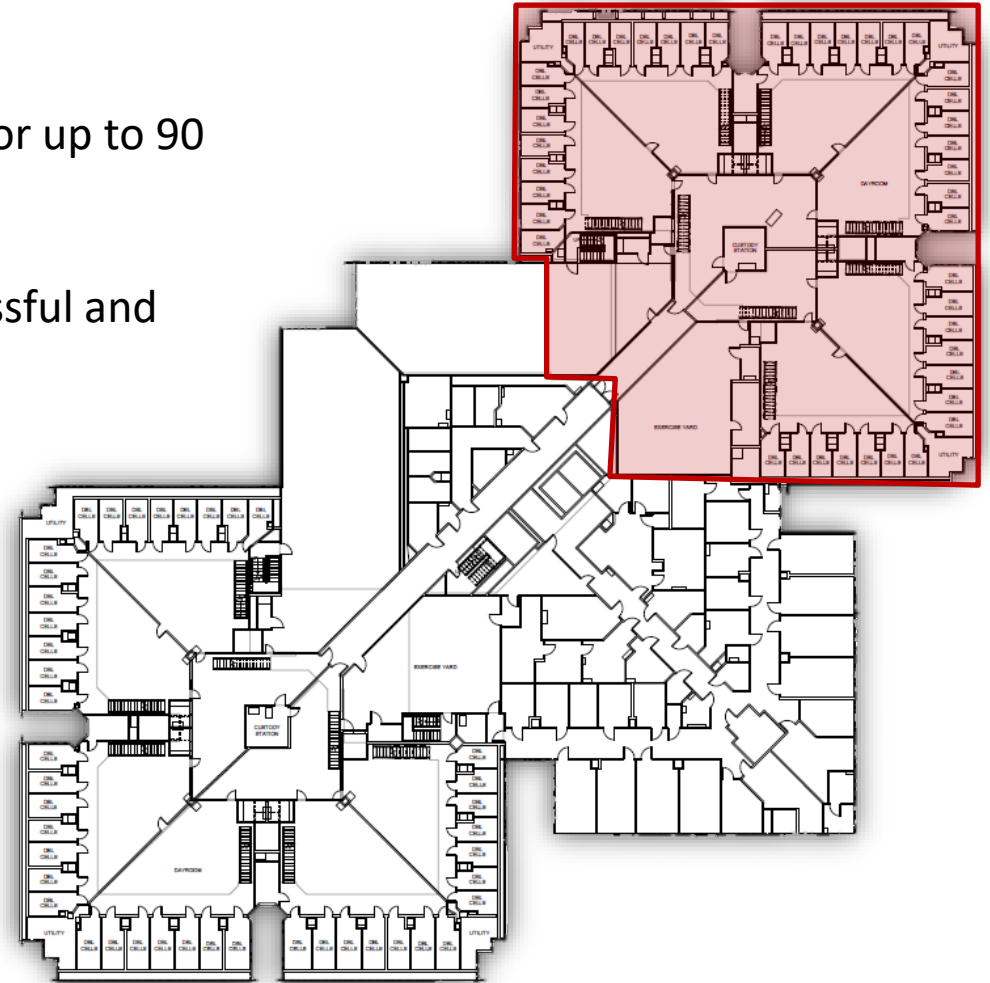
- Those who have not yet been assessed by MH, but exhibit obvious psychiatric or mental health symptoms
- To be assessed by MH the following day for assignment to a BH Level, if applicable.



BHU Housing

Justice Center Detention Facility

- JCDF Level Mods 2A-F will facilitate the BHU programming for up to 90 inmates.
- BHU beds are limited based on operational needs for successful and effective programming.
- Inmates will be housed based on their Behavioral Health level in a stepped care approach for the support to match their level of needs.
- The Jail Based Competency Treatment (JBCT) program will be moved from SCF to JCDF to be incorporated in the BHU housing area.
- Provides housing and programming for Male and Female inmates





BHU Staffing

Custody Staff

- **2.0 FTE Custody Sergeants**
- **4.0 FTE Correctional Officers**

Mental Health Staff

- **Various contracted Mental Health staff**

Programming Staff

- **Various contracted programming staff**

JBCT Staffing*

- **2.0 FTE assigned JBCT Officers**
- **4.0 FTE Mental Health staff**

**Moving from SCF to JCDF*

- Provides coverage / programming 7 days a week
- Multi-disciplinary team for reviews and decisions
- Opportunity to maximize out of cell time
- Provides for safety and security
- Builds rapport / familiarity with MH population

Future Needs:

MH Staff - Booking

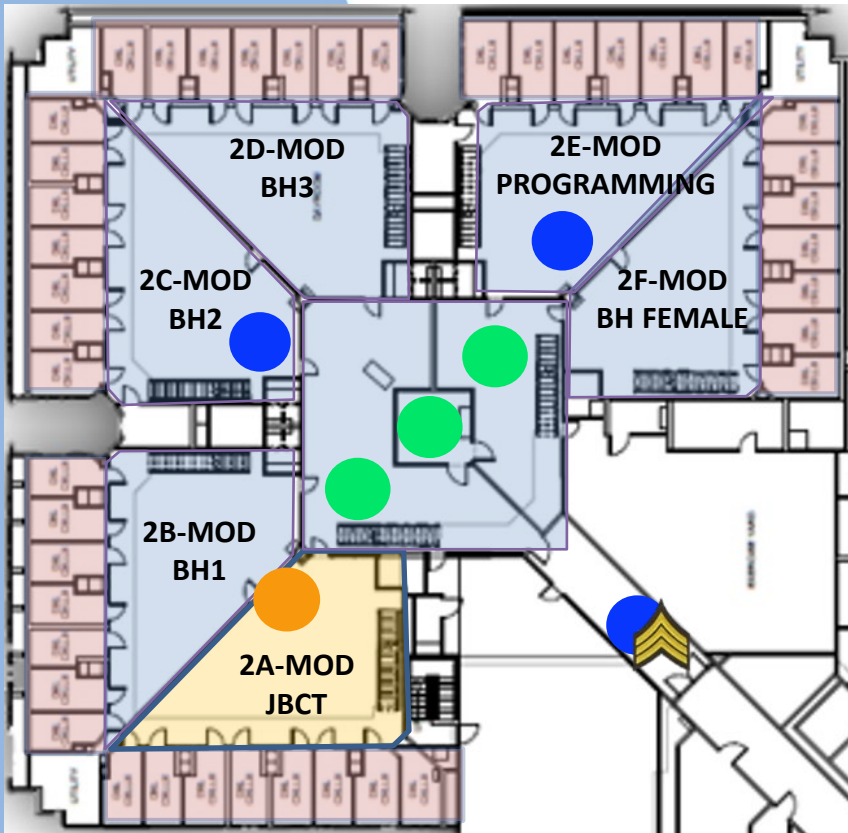
- **Additional Contracted Mental Health Staff (NCCHC/CalAIM)**







BHU Custody Staffing



JCDF - Level 2 A-F Modules - Typical Dayshift Staffing



-  1 Custody Sergeant – Supervision of BHU Program and BHU/JBCT Correctional Staff
-  2 Correctional Officers - BHU Operations
-  1 Correctional Officer- JBCT Operations
-  3 Correctional Officers- Routine Operations / Security / Tower Control

The BHU will house some of the most challenging / difficult inmates.

As of May 2025 – Inmates who would be redirected to BHU:

- 55% of ADSEP population (Assaults on Staff - 76% 2023, 58% 2024)
- 48% of GENSEP population
- 49% of all 2 Officer / 3 Officer Escorts



Behavioral Health Unit Incentives



- All individuals in the BHU will be required of the following, at minimum, for daily points:
 - Program Participation
 - Medication Compliance
 - Cell Cleanliness
 - Personal Hygiene
 - Court Appearance
- In addition to the above, lower levels of the program will be expected to complete more specific and complex tasks for points, such as:
 - Assigned Cleaning Duties
 - Participate in Yard/Exercise
 - Maintain Appropriate Behavior/Interactions
 - Dress Appropriately
 - Complete Required Program Assignments



BHU Programs Offered

A wide variety of programs tailored to the needs of inmates assigned to Behavioral Health Housing will be offered. Some of these programs may include:

Supportive Services:

- Music Therapy
- Art Therapy
- Mindfulness Exercises
- Yoga
- Coping Strategies
- National Alliance for the Mentally Ill (NAMI) Peer Support Group
- Socialization Games

Treatment Services:

- Substance Use Disorder Treatment
- Medication Assisted Treatment (MAT)
- Co-occurring Disorder Treatment
- Cognitive Behavior Therapy

Education:

- High School Classes
- Life Skills/Employment Readiness

Pre-Release Planning:

- Re-entry Preparation
- Collaboration with Behavioral Health
- Case Management Services

These programs will help maximize out-of-cell time for BHU inmates and allow inmates the opportunity to be productive with their time.





BHU – New Look

- Repainting / refinishing of housing units
- Infrastructure for power and data lines
- Converting classroom space into office space
- Replacement / addition of workstations
- Acoustic panels / sound barriers
- New housing unit furniture
- Inmate incentives
- Inmate clothing





Financial Impacts

FY2024/25 - Facility Improvements

- Protective TV enclosures
- Acoustic wall panels
- New tables, chairs & programming furniture
- Replacement of officer workstations

Funded by Inmate Welfare Fund (\$153,952)

No impact to County General Fund

FY2025/26 - Staffing

- Addition of 2.0 FTE Custody Sergeants
- Offset by deletion of 3.0 FTE Correctional Officers
- Net FY2025/26 savings of \$240,737

Ongoing BHU Support

- Inmate incentives
- Inmate clothing
- Programming needs

Funded by the Inmate Welfare Fund

No impact to County General Fund



Sheriff Recommendation

The Sheriff recommends that the Board of Supervisors:

1. Receive an informational presentation on the Sheriff Office's implementation of a Behavioral Health Unit at the Justice Center Detention Facility; and
2. Adopt a resolution amending the List of Numbers and Classifications of Positions to add 2.0 FTE Custody Sergeants and delete 3.0 FTE Correctional Officers to supervise the Behavioral Health Unit.