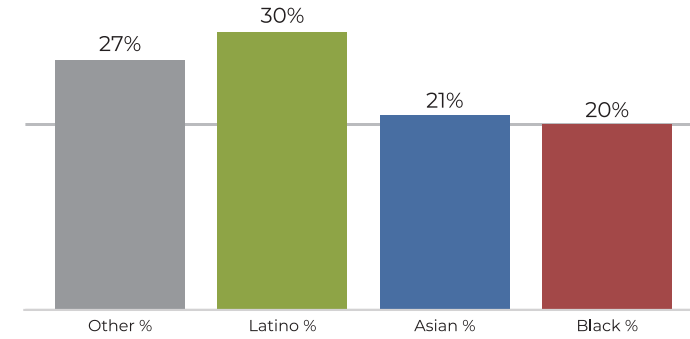
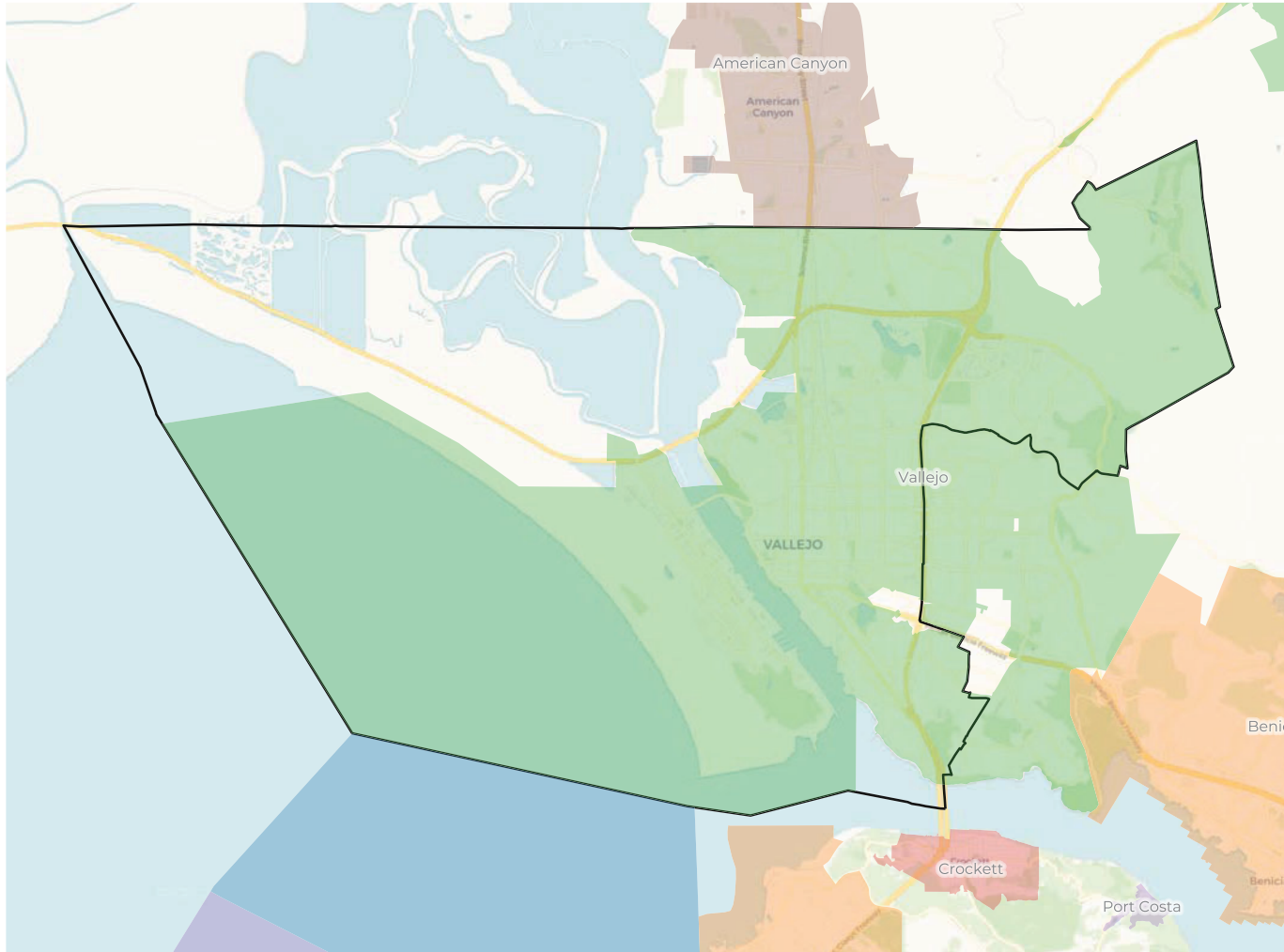
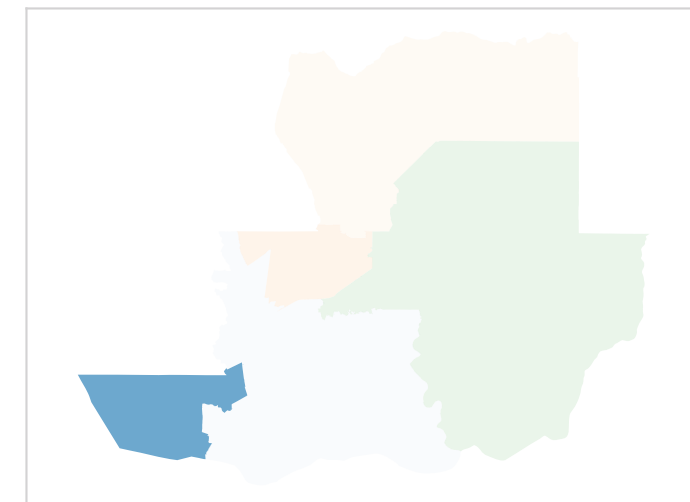
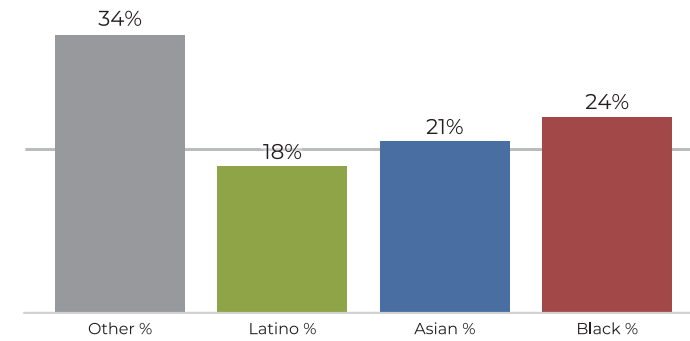


2020 Census

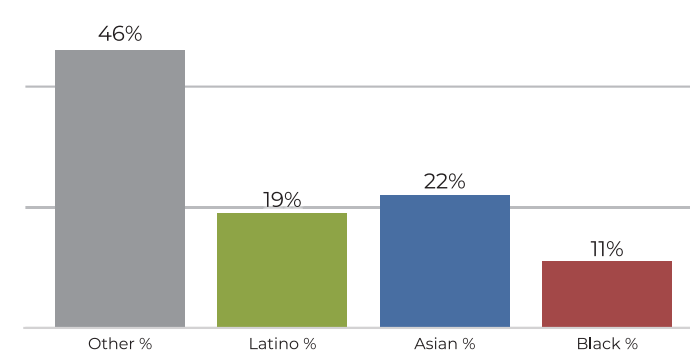
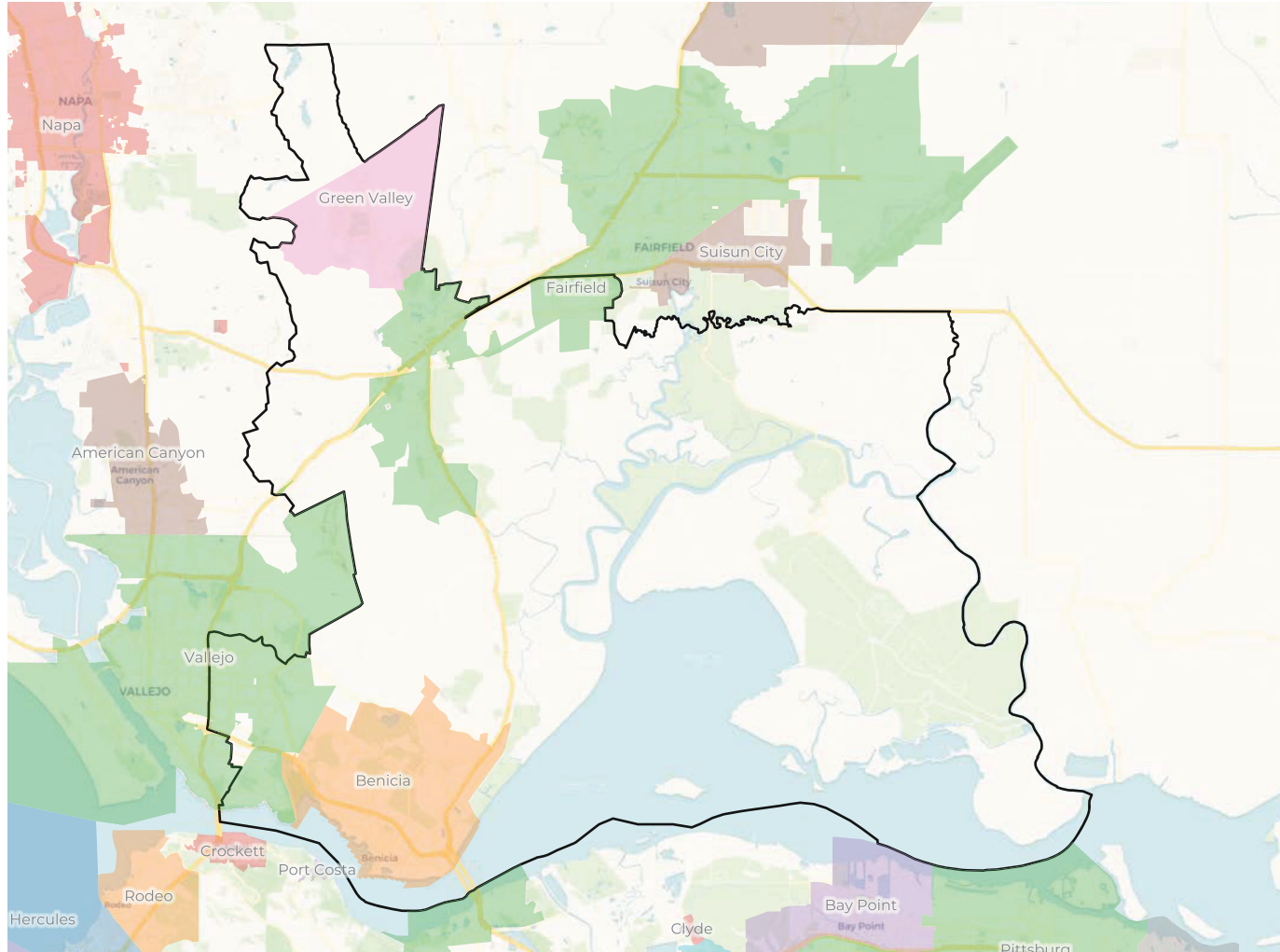
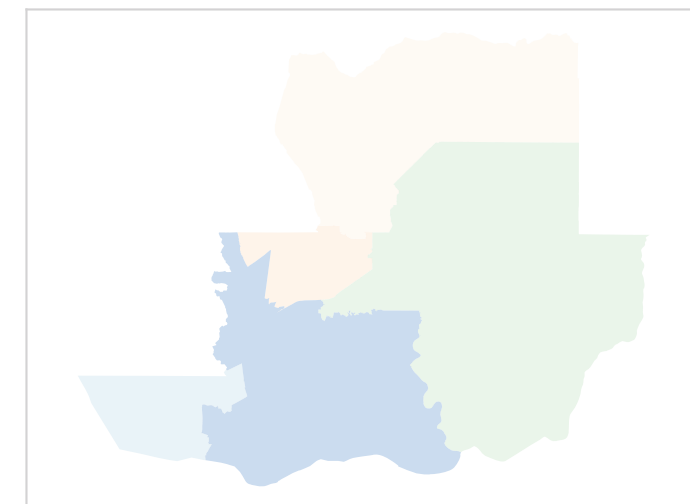
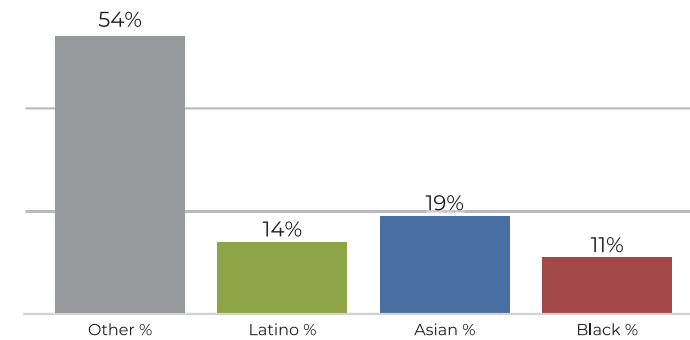
	1	2	3	4	5
Population	91,970	89,512	85,651	90,832	89,892
Deviation	2,399	-59	-3,920	1,261	321
Deviation %	2.7%	-0.1%	-4.4%	1.4%	0.4%
Other	24,918	41,978	30,384	51,324	44,517
Other %	27.1%	46.9%	35.5%	56.5%	49.5%
Latino	28,387	17,530	30,101	28,387	21,856
Latino %	30.9%	19.6%	35.1%	31.3%	24.3%
Asian	19,983	19,900	11,925	6,237	12,796
Asian %	21.7%	22.2%	13.9%	6.9%	14.2%
Black	18,682	10,104	13,241	4,884	10,723
Black %	20.3%	11.3%	15.5%	5.4%	11.9%

Citizen Voting Age Population (CVAP)

	1	2	3	4	5
Total CVAP	59,868	63,049	55,620	66,862	60,755
Other CVAP	20,571	34,476	24,949	42,583	35,003
Other CVAP %	34.4%	54.7%	44.9%	63.7%	57.6%
Latino CVAP	11,334	9,082	11,621	13,900	10,503
Latino CVAP %	18.9%	14.4%	20.9%	20.8%	17.3%
Asian CVAP	13,085	12,532	8,444	3,788	7,100
Asian CVAP %	21.9%	19.9%	15.2%	5.7%	11.7%
Black CVAP	14,878	6,959	10,606	6,591	8,148
Black CVAP %	24.9%	11.0%	19.1%	9.9%	13.4%

District 1
2020 Census

Citizen Voting Age Population


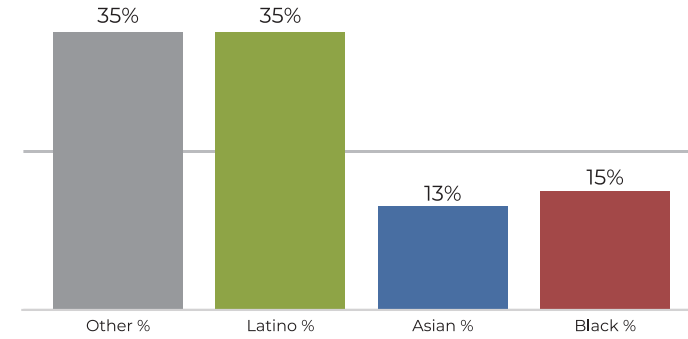
Population	Deviation	Deviation %	Other	Other %	Latino	Latino %	Asian	Asian %	Black	Black %
91,970	2,399	2.7%	24,918	27.1%	28,387	30.9%	19,983	21.7%	18,682	20.3%
Total CVAP	Other CVAP	Other CVAP %	Latino CVAP	Latino CVAP %	Asian CVAP	Asian CVAP %	Black CVAP	Black CVAP %		
59,868	20,571	34.4%	11,334	18.9%	13,085	21.9%	14,878	24.9%		

District 2
2020 Census

Citizen Voting Age Population


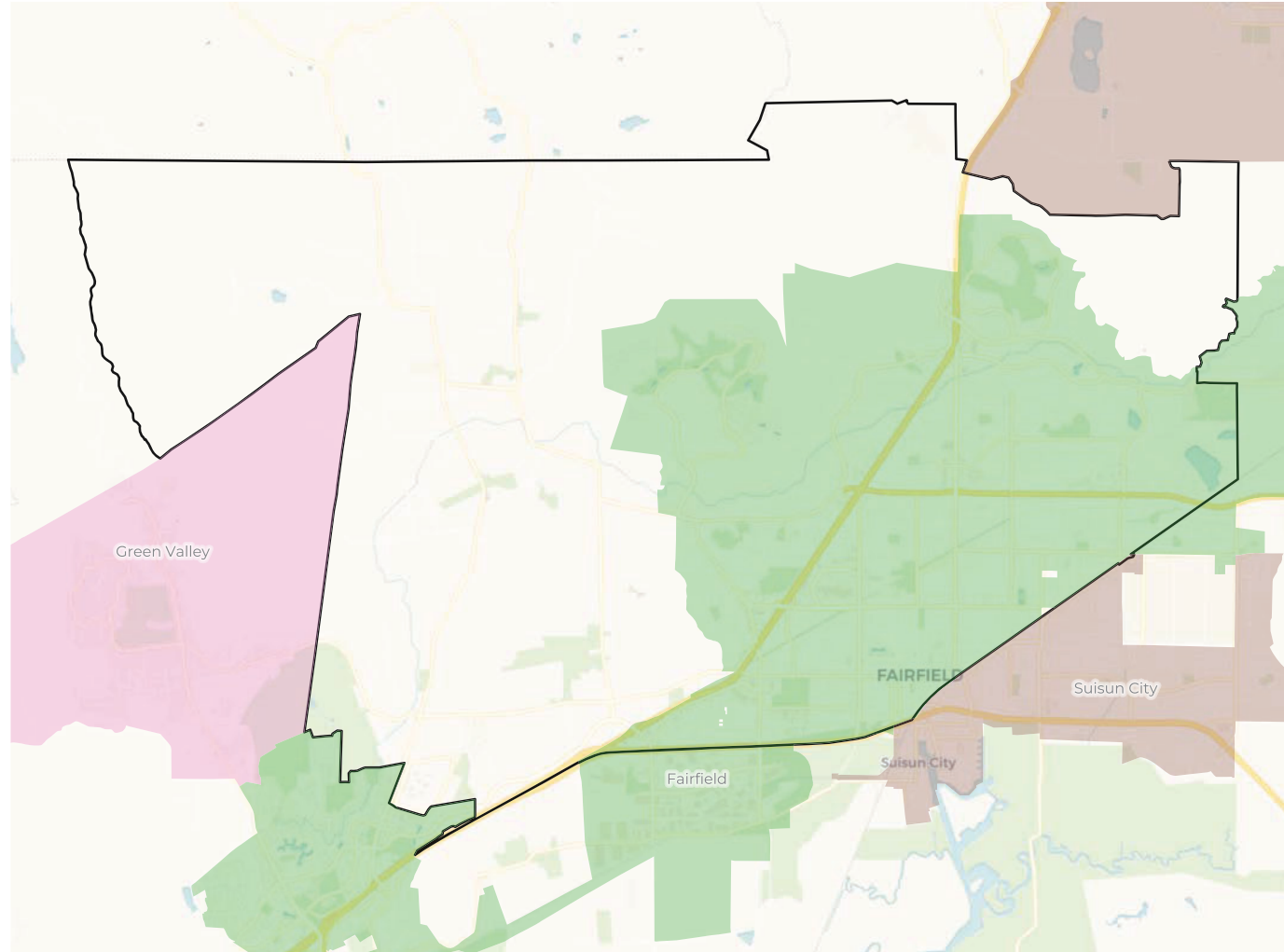
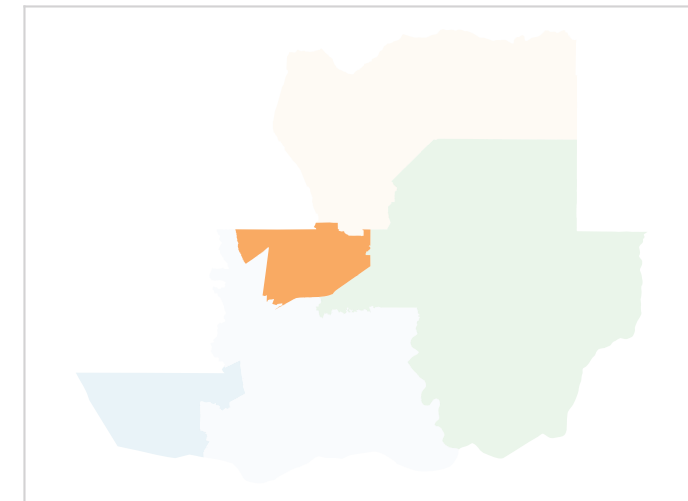
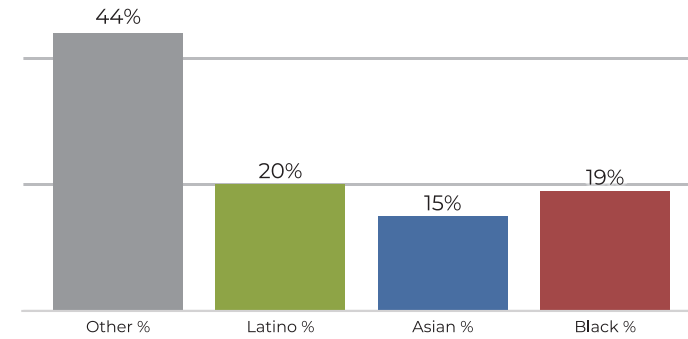
Population	Deviation	Deviation %	Other	Other %	Latino	Latino %	Asian	Asian %	Black	Black %
89,512	-59	-0.1%	41,978	46.9%	17,530	19.6%	19,900	22.2%	10,104	11.3%
Total CVAP	Other CVAP	Other CVAP %	Latino CVAP	Latino CVAP %	Asian CVAP	Asian CVAP %	Black CVAP	Black CVAP %		
63,049	34,476	54.7%	9,082	14.4%	12,532	19.9%	6,959	11.0%		

District 3

2020 Census



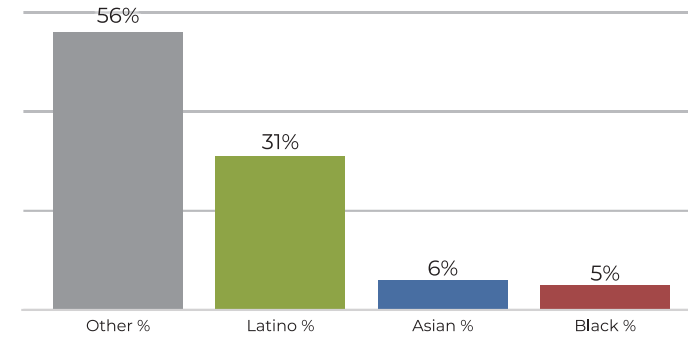
Citizen Voting Age Population



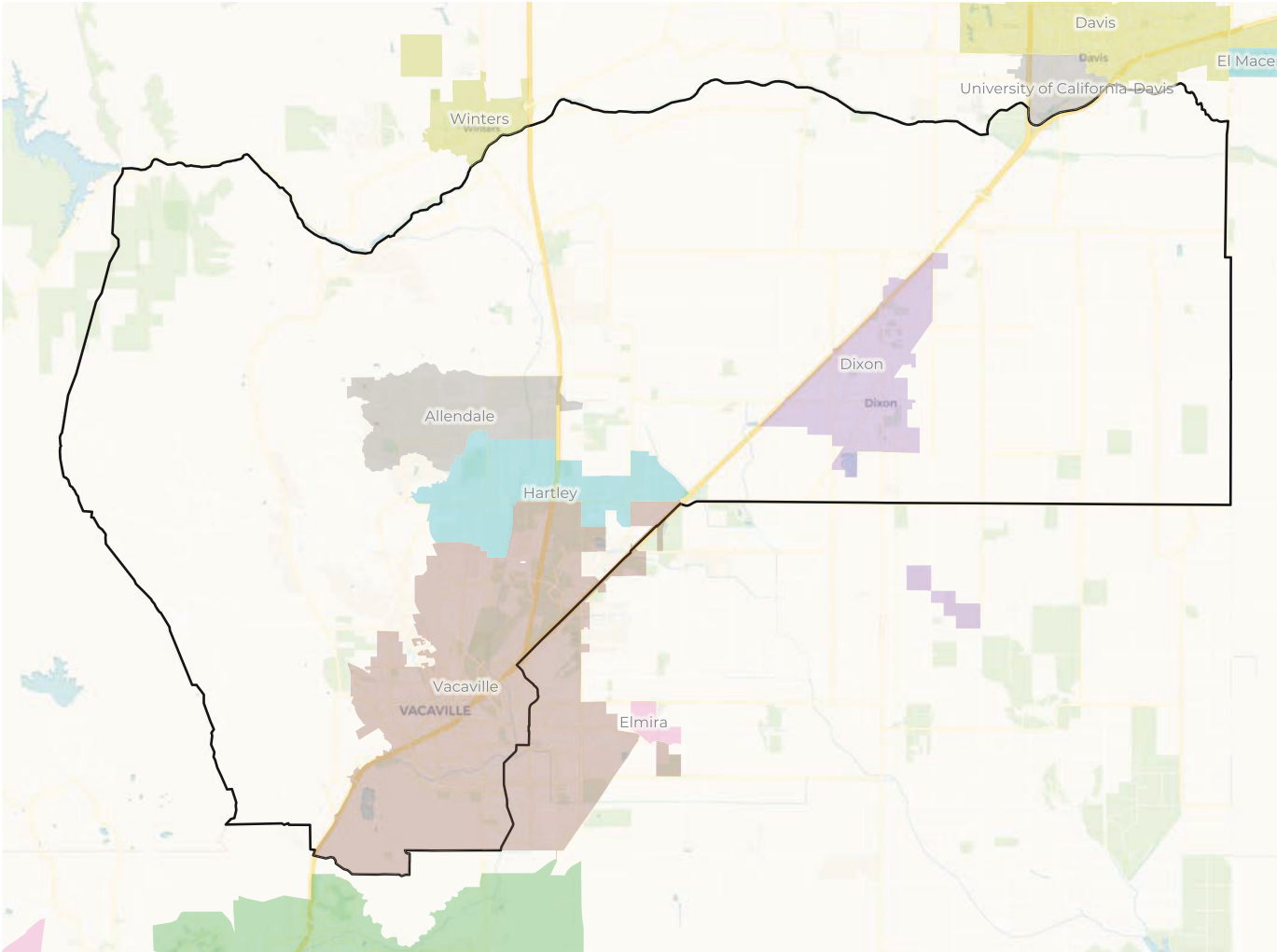
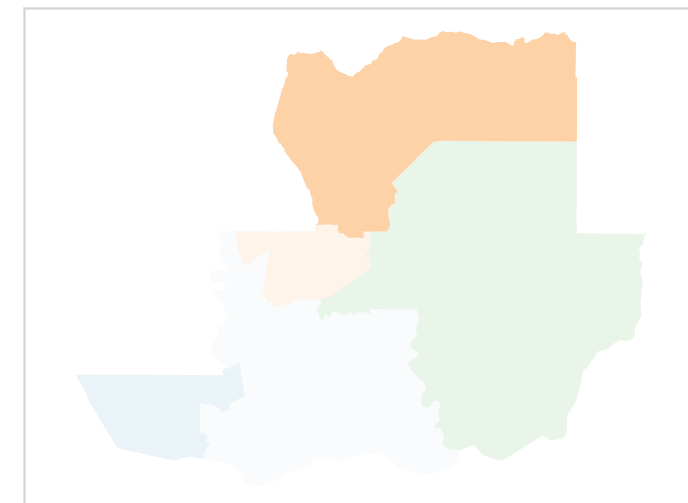
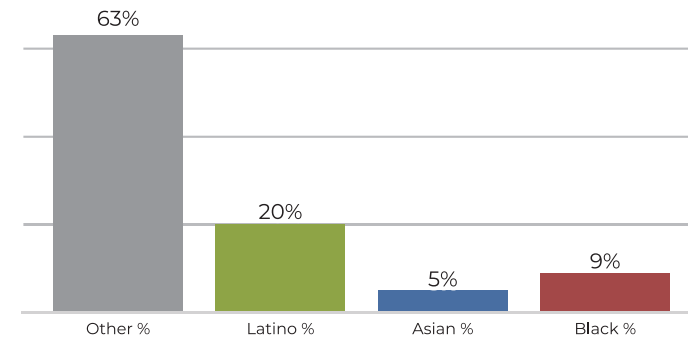
Population	Deviation	Deviation %	Other	Other %	Latino	Latino %	Asian	Asian %	Black	Black %
85,651	-3,920	-4.4%	30,384	35.5%	30,101	35.1%	11,925	13.9%	13,241	15.5%
Total CVAP	Other CVAP	Other CVAP %	Latino CVAP	Latino CVAP %	Asian CVAP	Asian CVAP %	Black CVAP	Black CVAP %		
55,620	24,949	44.9%	11,621	20.9%	8,444	15.2%	10,606	19.1%		

District 4

2020 Census

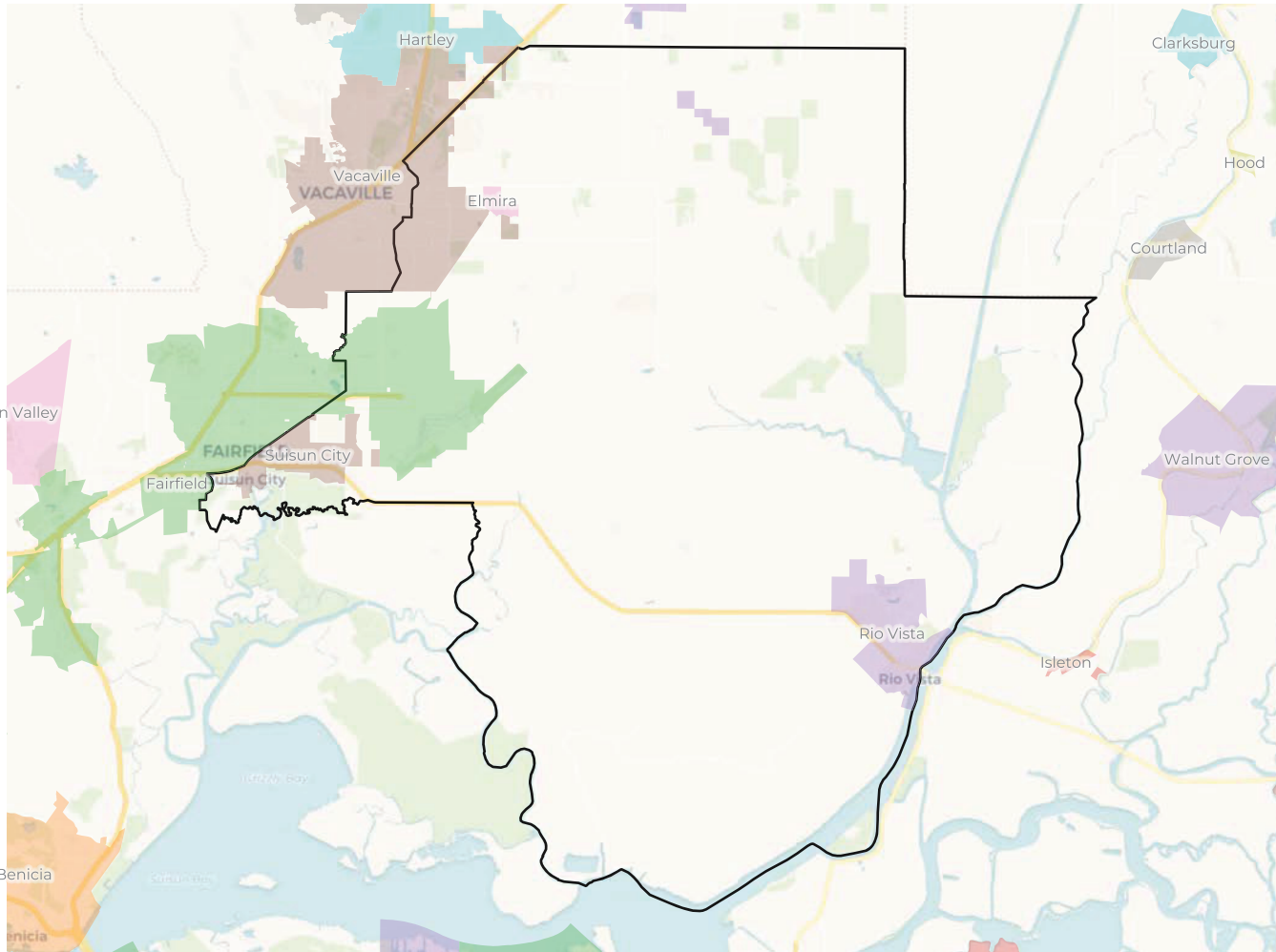


Citizen Voting Age Population

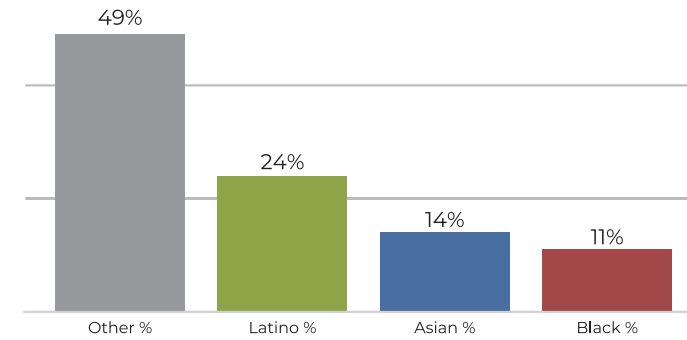


Population	Deviation	Deviation %	Other	Other %	Latino	Latino %	Asian	Asian %	Black	Black %
90,832	1,261	1.4%	51,324	56.5%	28,387	31.3%	6,237	6.9%	4,884	5.4%
Total CVAP	Other CVAP	Other CVAP %	Latino CVAP	Latino CVAP %	Asian CVAP	Asian CVAP %	Black CVAP	Black CVAP %		
66,862	42,583	63.7%	13,900	20.8%	3,788	5.7%	6,591	9.9%		

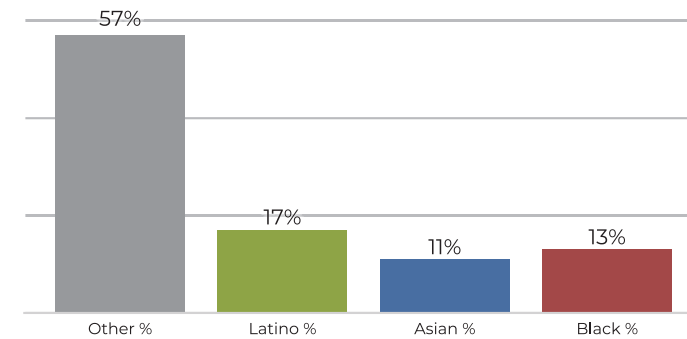
District 5



2020 Census



Citizen Voting Age Population



Population	Deviation	Deviation %	Other	Other %	Latino	Latino %	Asian	Asian %	Black	Black %
89,892	321	0.4%	44,517	49.5%	21,856	24.3%	12,796	14.2%	10,723	11.9%
Total CVAP	Other CVAP	Other CVAP %	Latino CVAP	Latino CVAP %	Asian CVAP	Asian CVAP %	Black CVAP	Black CVAP %		
60,755	35,003	57.6%	10,503	17.3%	7,100	11.7%	8,148	13.4%		

