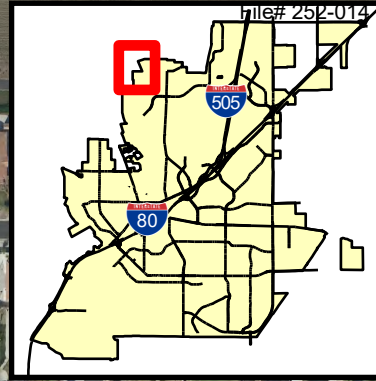


PROJECT SITE

Solano County
Vacaville



NEW MULTI-USE PATH



PROPOSED CHANGES





GENERAL PLAN CHANGE

RE Residential Estates

ZONING CHANGE

RE-12 (min. 12,000 sq. ft. lot sizes)

BOUNDARIES

-  Project Site
-  City Limits
-  Sphere of Influence
-  Urban Growth Boundary



CITY OF VACAVILLE
COMMUNITY DEVELOPMENT
DEPARTMENT



LOCATION MAP

MCMURTRY CREEK ESTATES

APNs 0105-200-140 & 0105-200-150

FILE NO. 21-227