



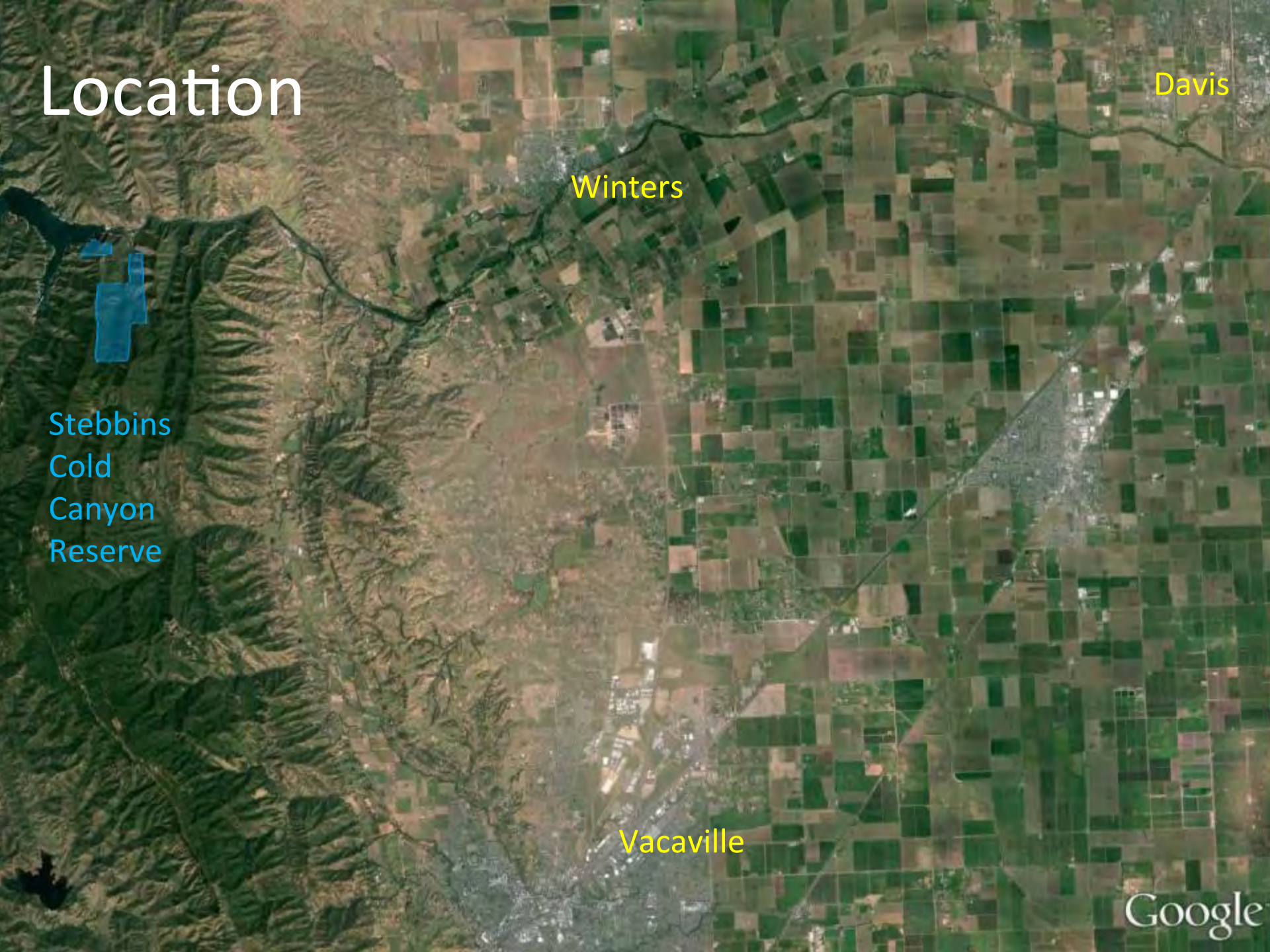
Stebbins Cold Canyon / Putah Creek Wildlife Area

Safety and access update

Prepared by Jeffrey Clary, Reserve Director of UC Davis
Stebbins Cold Canyon

Photo: Scott McCusker

Location



Davis

Winters

Stebbins
Cold
Canyon
Reserve

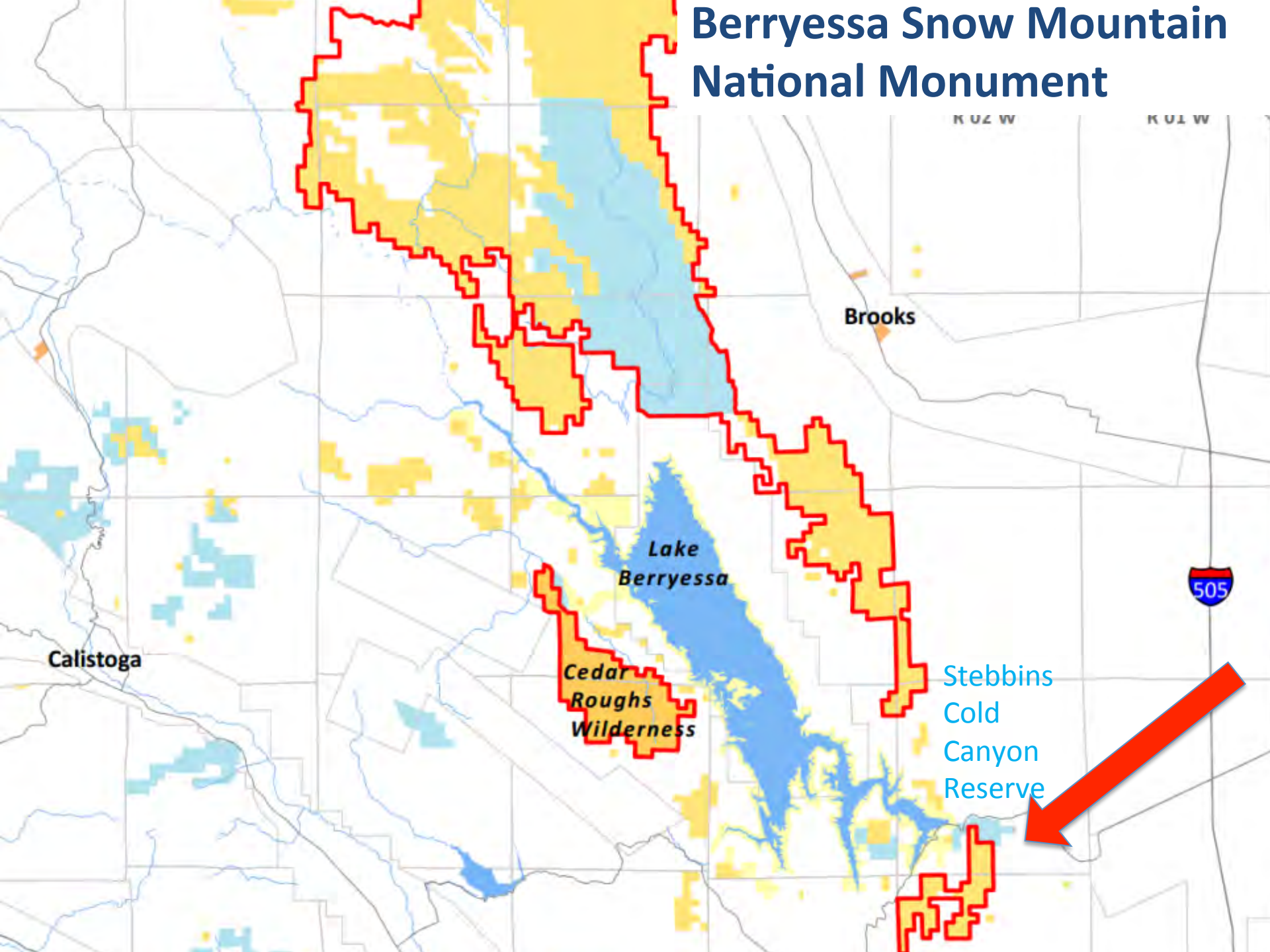
Vacaville

Google

Cold Canyon Trails

- Most used in the region
- Gateway to the new National Monument
- Skyrocketing use figures since 2013
- Many rescues of lost/injured hikers over last 3 years
- Complex land ownership and jurisdictional landscape

Berryessa Snow Mountain National Monument



Brooks

Calistoga

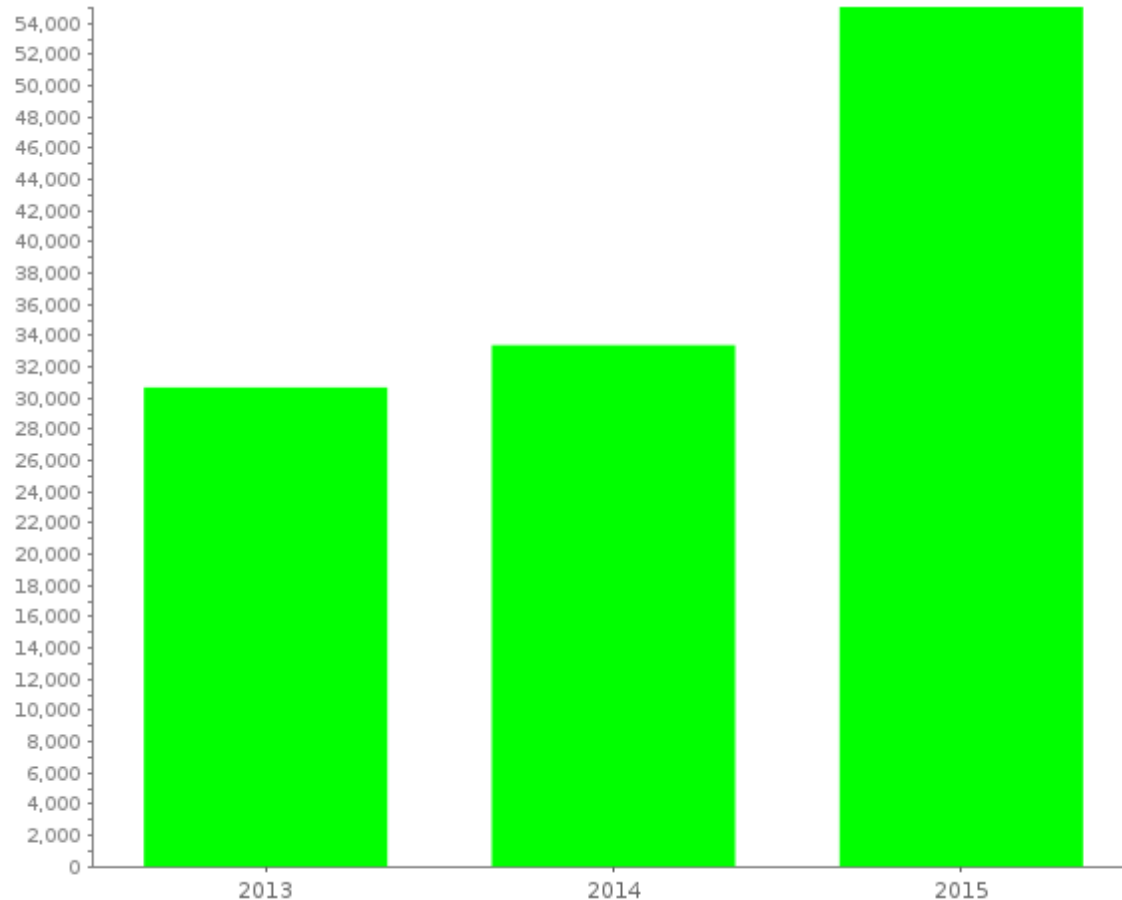
Cedar
Roughs
Wilderness

Lake
Berryessa

Stebbins
Cold
Canyon
Reserve

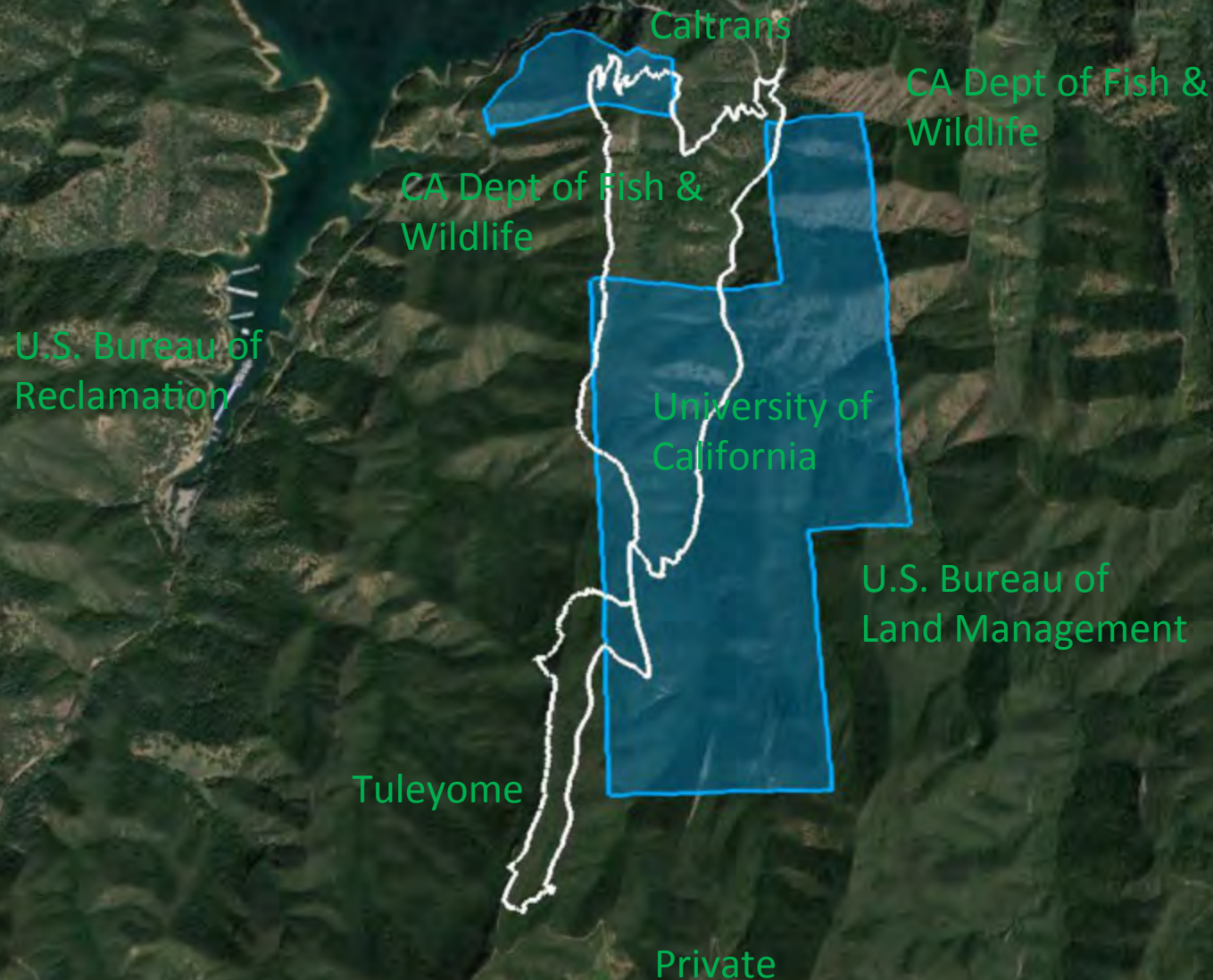
505

Recreational visitors



Annual Visitor Numbers
(from infrared trail counters)

Complex property ownership



The map displays a complex landscape with several distinct land parcels outlined in blue. The ownership of these parcels is indicated by green text labels. The parcels are distributed across the landscape, with some located near a large body of water on the left and others in more mountainous areas. The labels include 'Caltrans' at the top, 'CA Dept of Fish & Wildlife' in two locations, 'U.S. Bureau of Reclamation' on the left, 'University of California' in the center, 'U.S. Bureau of Land Management' on the right, 'Tuleyome' at the bottom left, and 'Private' at the bottom center.

Caltrans

CA Dept of Fish & Wildlife

CA Dept of Fish & Wildlife

U.S. Bureau of Reclamation

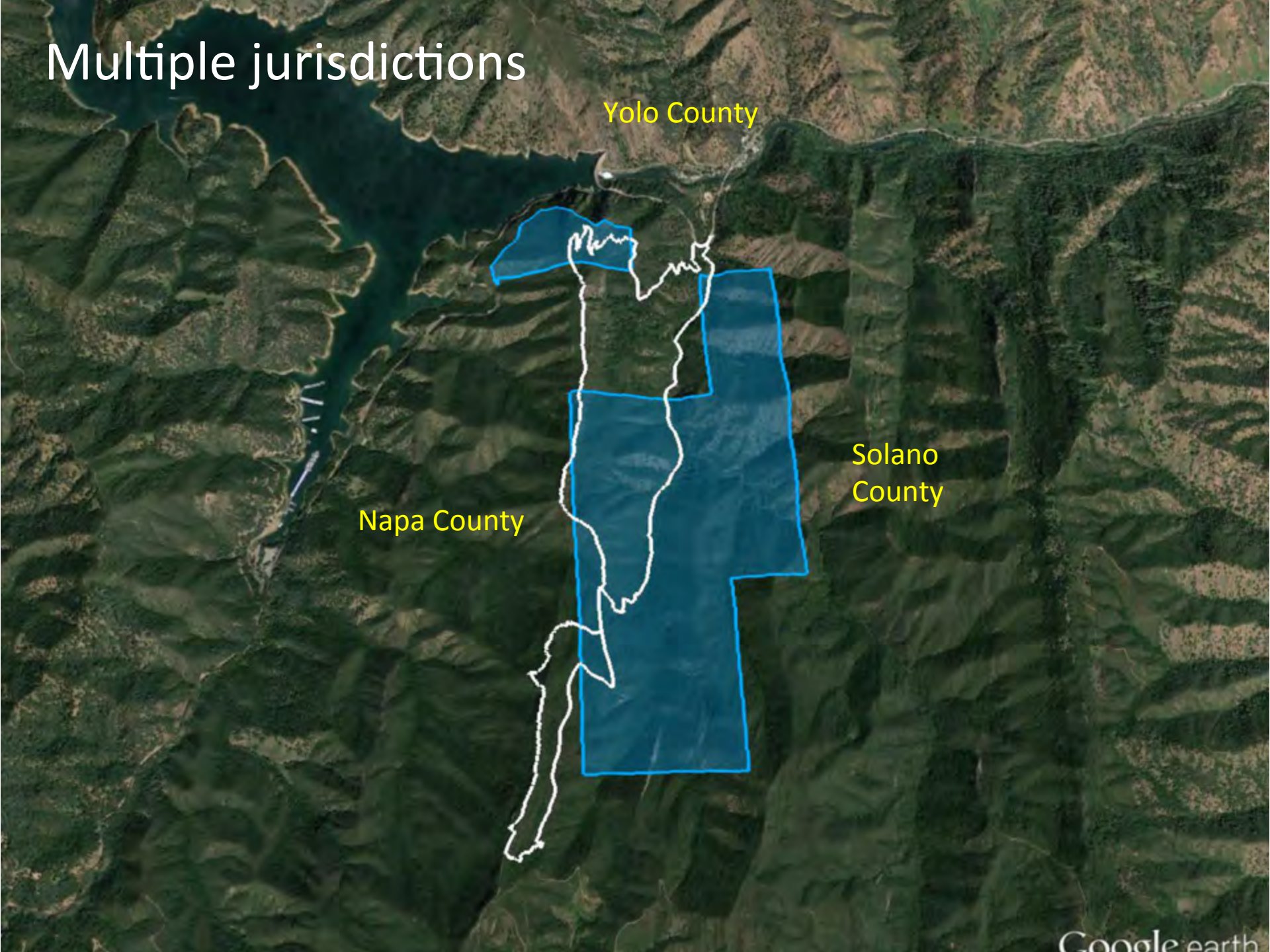
University of California

U.S. Bureau of Land Management

Tuleyome

Private

Multiple jurisdictions



Wragg Fire

July 22nd, 2015



Post-fire trail damage



Trail repair with
volunteer crews
(University and
Tuleyome partnership)
and trail crews from
American Conservation
Experience





New larger parking
area and trail access

Putah Creek

128

P

128

128

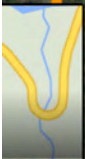
UC Davis - Stebbins Cold
Canyon Natural Reserve

128

Stebbins Cold
Canyon Reserve

Old parking area

Google



New parking area



Still to come

- New permanent signage (from BLM disaster funds)
- More trail improvements and erosion prevention (partnership with SCWA / FEMA)
- Potential additional parking changes

Typical weekend day before
the Wragg Fire – former
parking area



Parking along Highway 128

- Narrow shoulder, hairpin turn, steep grade
- Those who park along shoulder tend to cross highway near the curve, rather than using the under-highway passage
- Can block first-responder access points
- Zone of concern: between Monticello Dam and the Putah Creek bridge by Canyon Creek