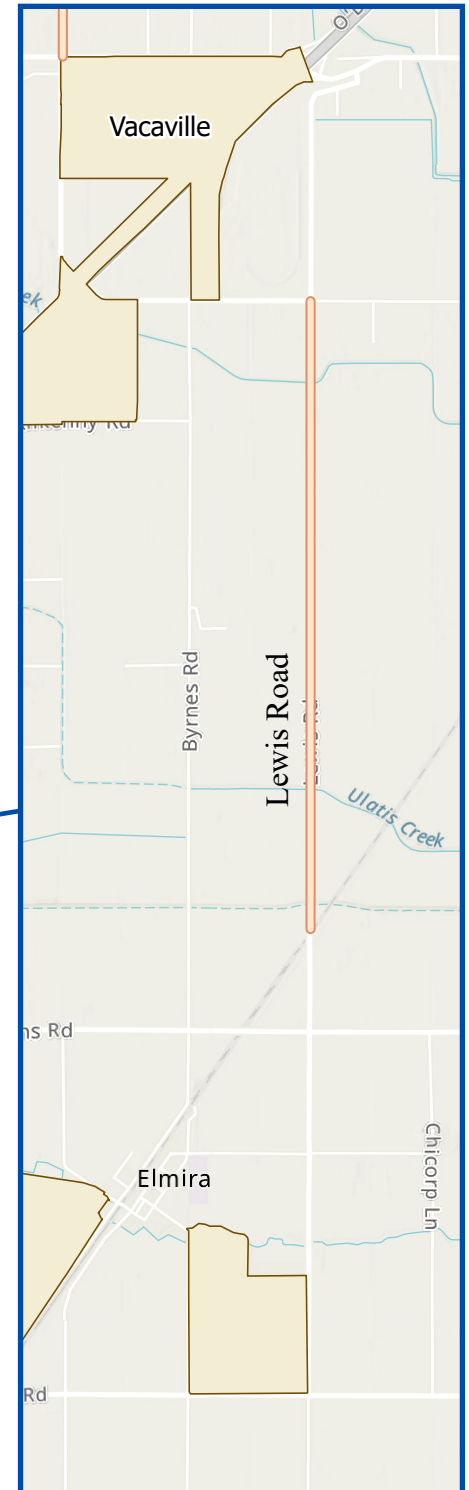
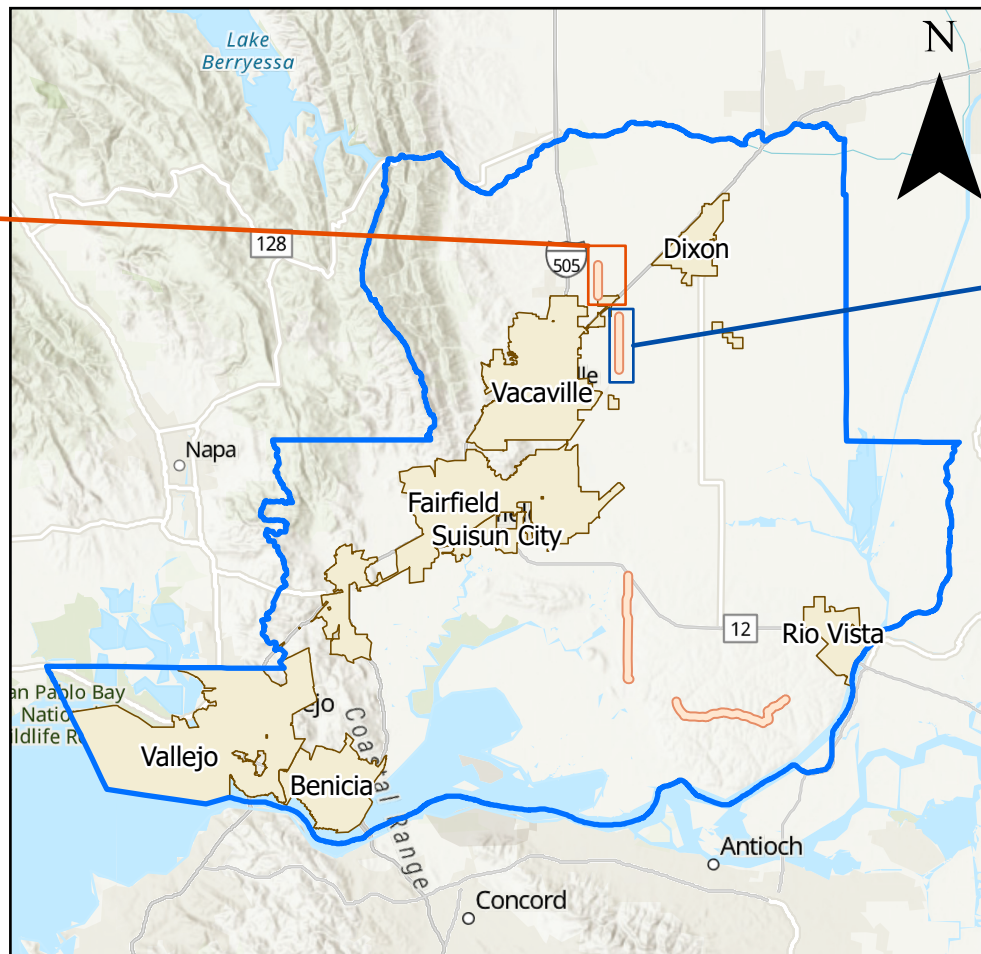
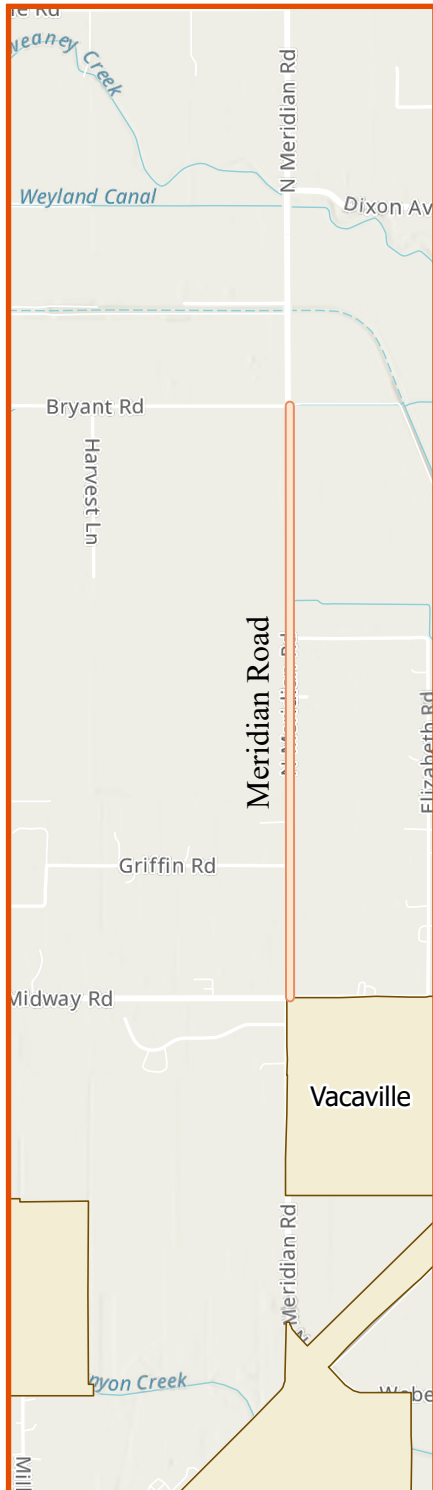


Solano County  
Department of Resource Management  
Public Works Engineering

Paving Project 2025

Meridian Road from Bryant Rd to Midway Rd

Lewis Road from Weber Rd to .5 M N of Hawkins Road

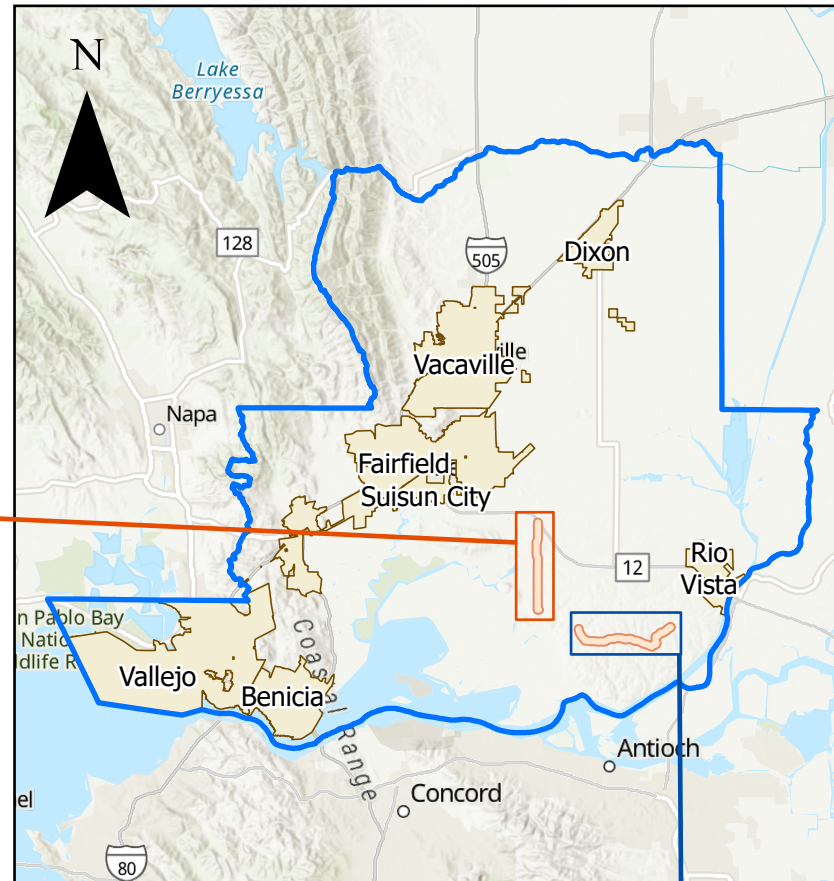


Solano County  
Department of Resource  
Management Public Works  
Engineering

Montezuma Hills Pavement  
Maintenance Project 2025

Shiloh Road from SR 12 to 5M south

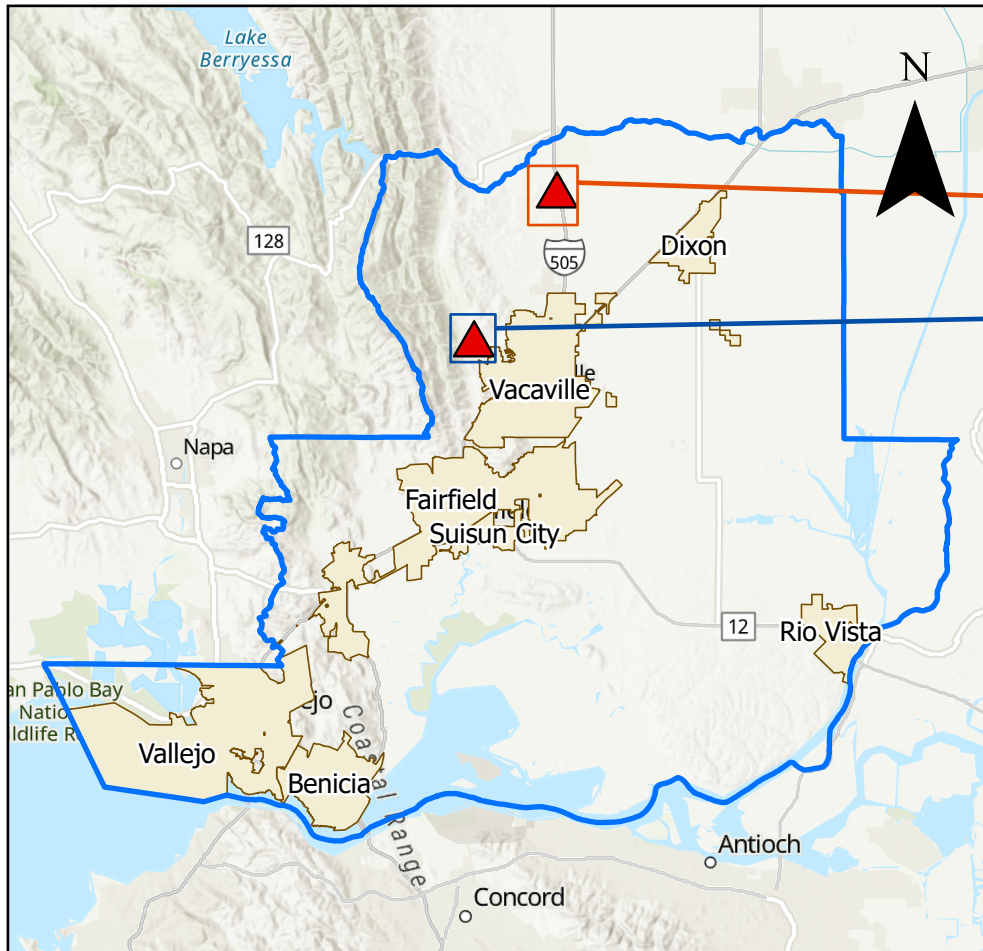
Montezuma Hills Road from Birds  
Landing to Anderson Road



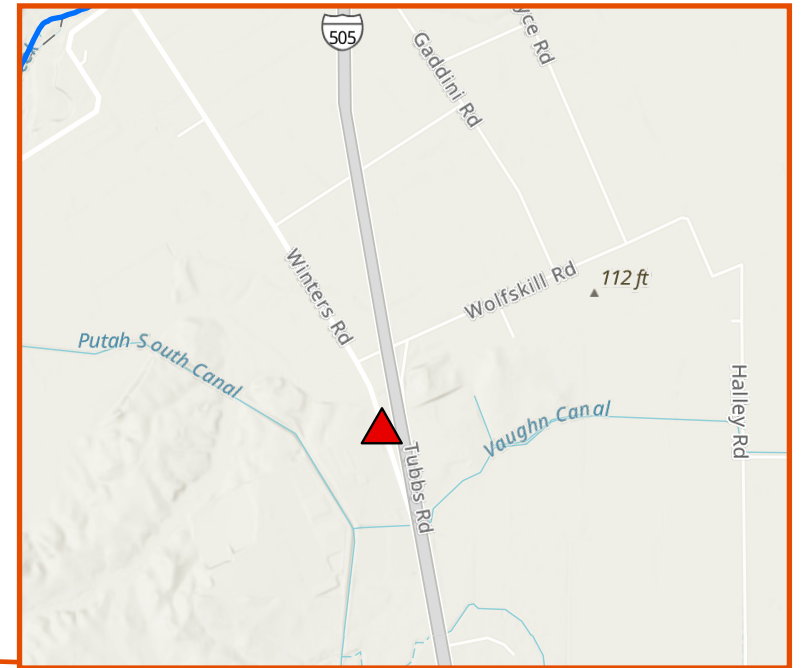


Solano County  
Department of Resource Management  
Public Works Engineering

Culvert Improvement Project 2025



Winter Road Location



Bucktown Lane Location

