

SOLANO COUNTY INDEX OF ECONOMIC AND COMMUNITY PROGRESS 2012



**SOLANO
COUNTY**

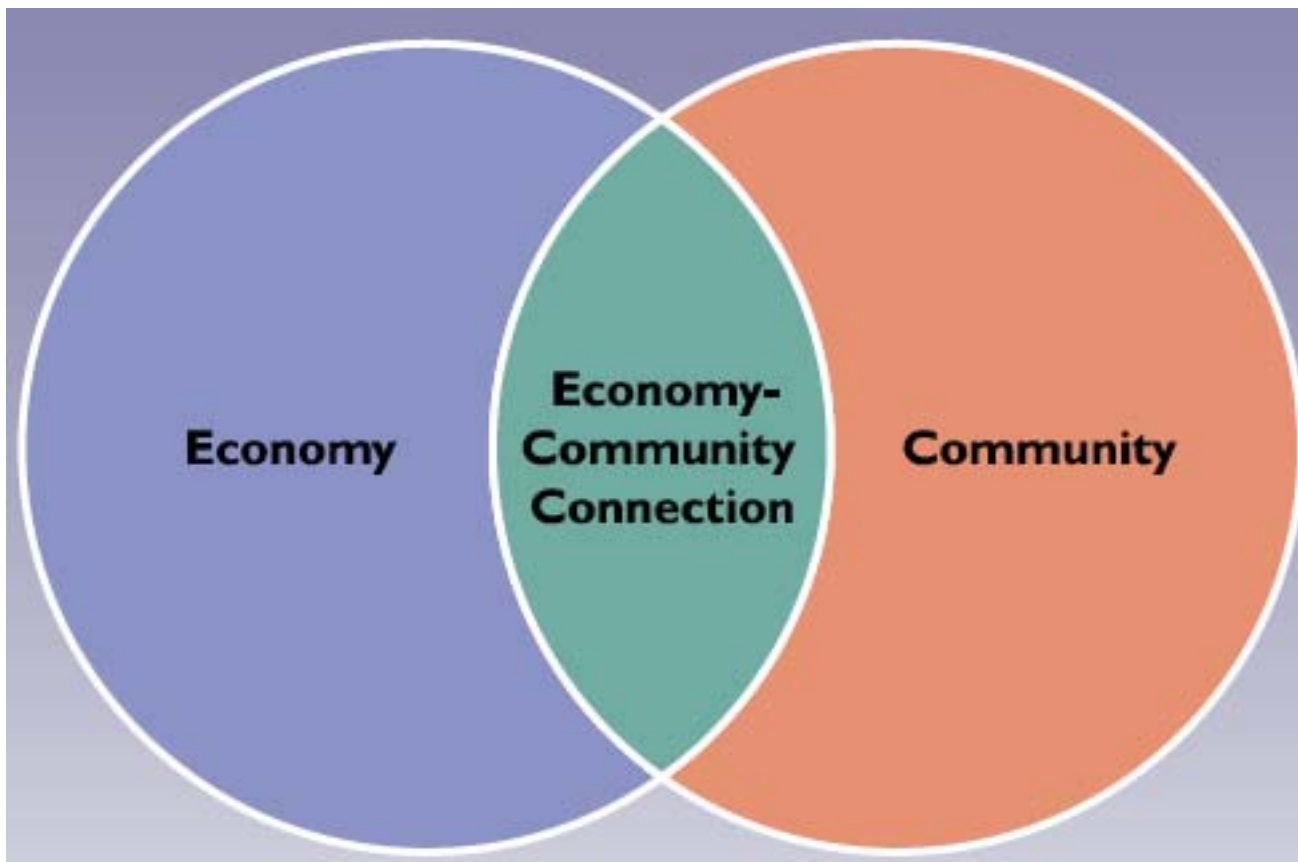


March 26, 2013

Overview



- Economic Progress based on sync of three major markets
 - Financial Markets
 - Labor Markets
 - Goods/Services
- Community progress based on specific changes in:
 - Population and Demography
 - Education
 - Health Care
 - Housing
 - Government Resources
- These are all linked to each other

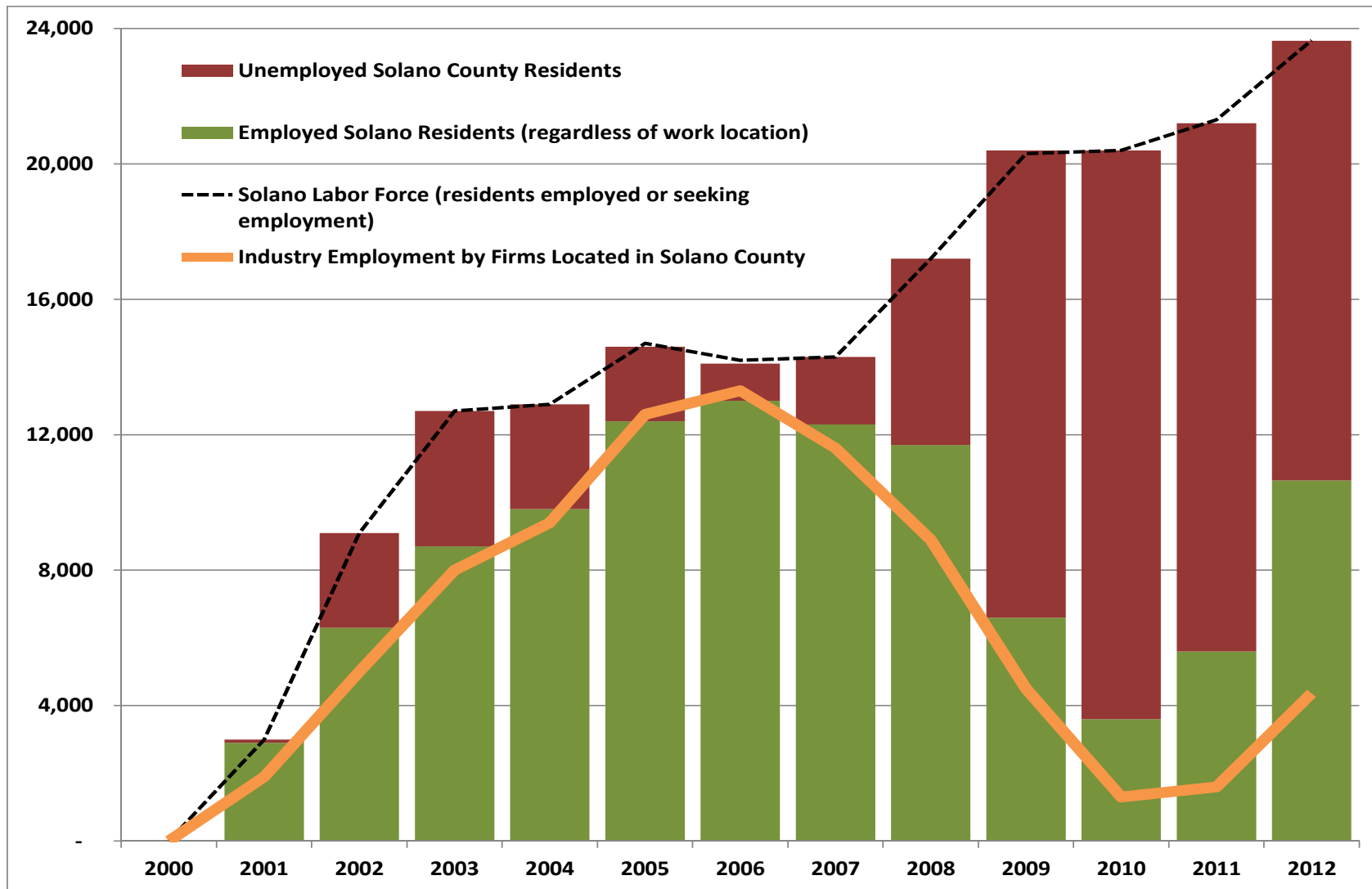


Economic Highlights

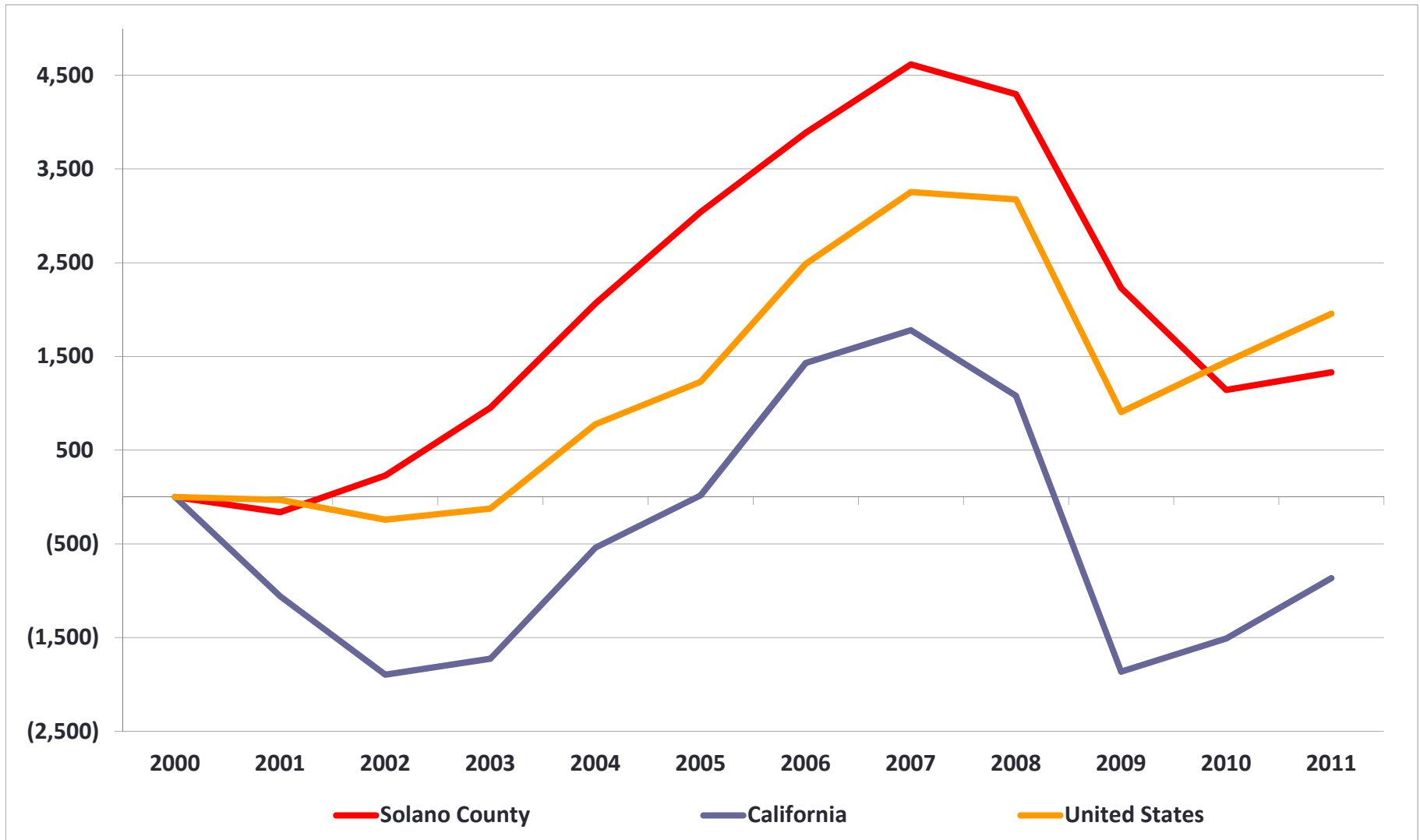


- Solano County: continued economic recovery
 - Job growth rising in trend since 2010
 - Taxable sales are up, true across California
 - Employment not keeping pace with labor force
 - Standard of living indicators mixed
 - Non-employer growth indicates small businesses back in the game

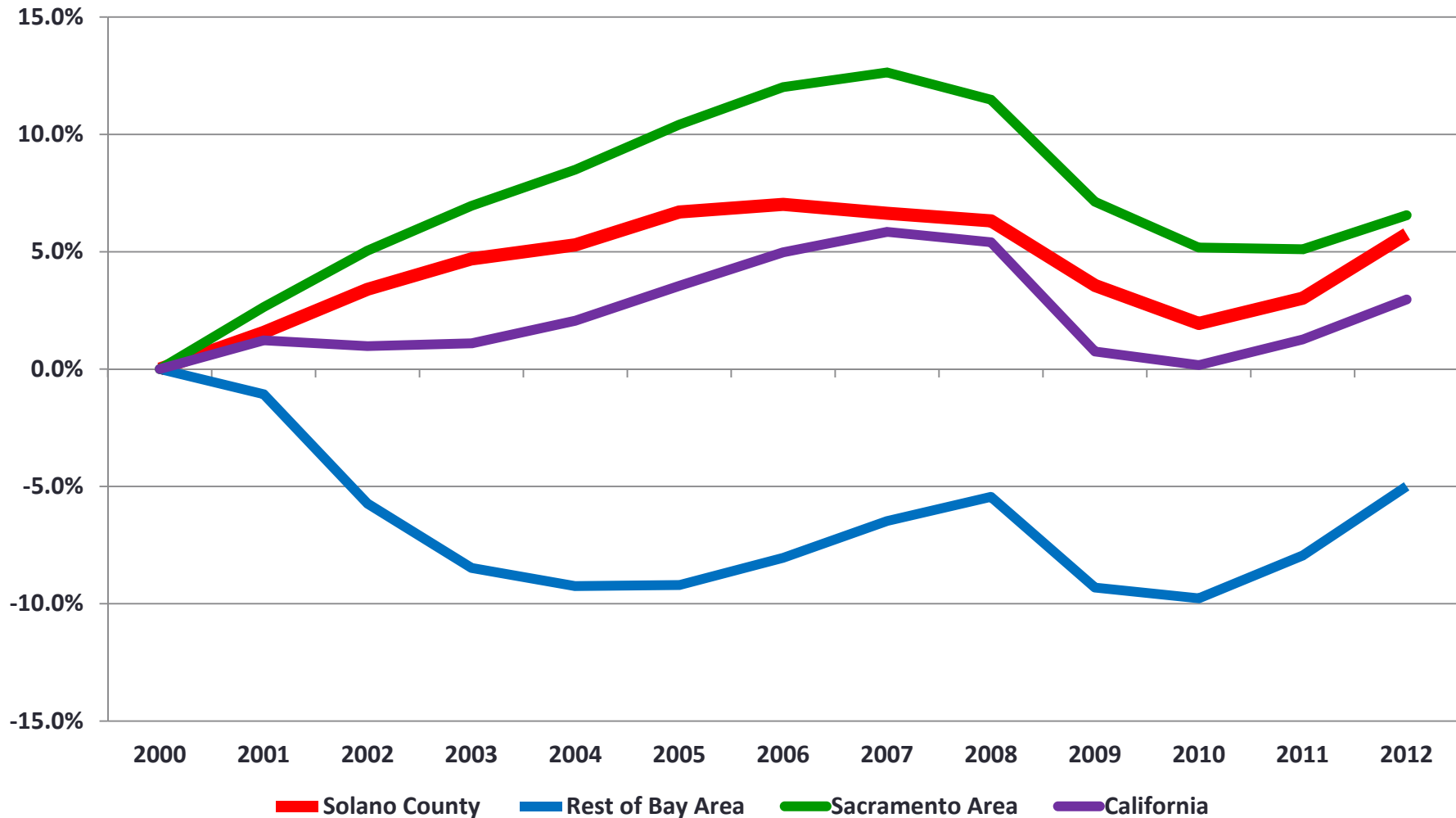
Labor Force Indicators (EDD)



Per Capital PI Change (BEA)



Employed Residents (EDD): % Change



Economic Progress: Considerations



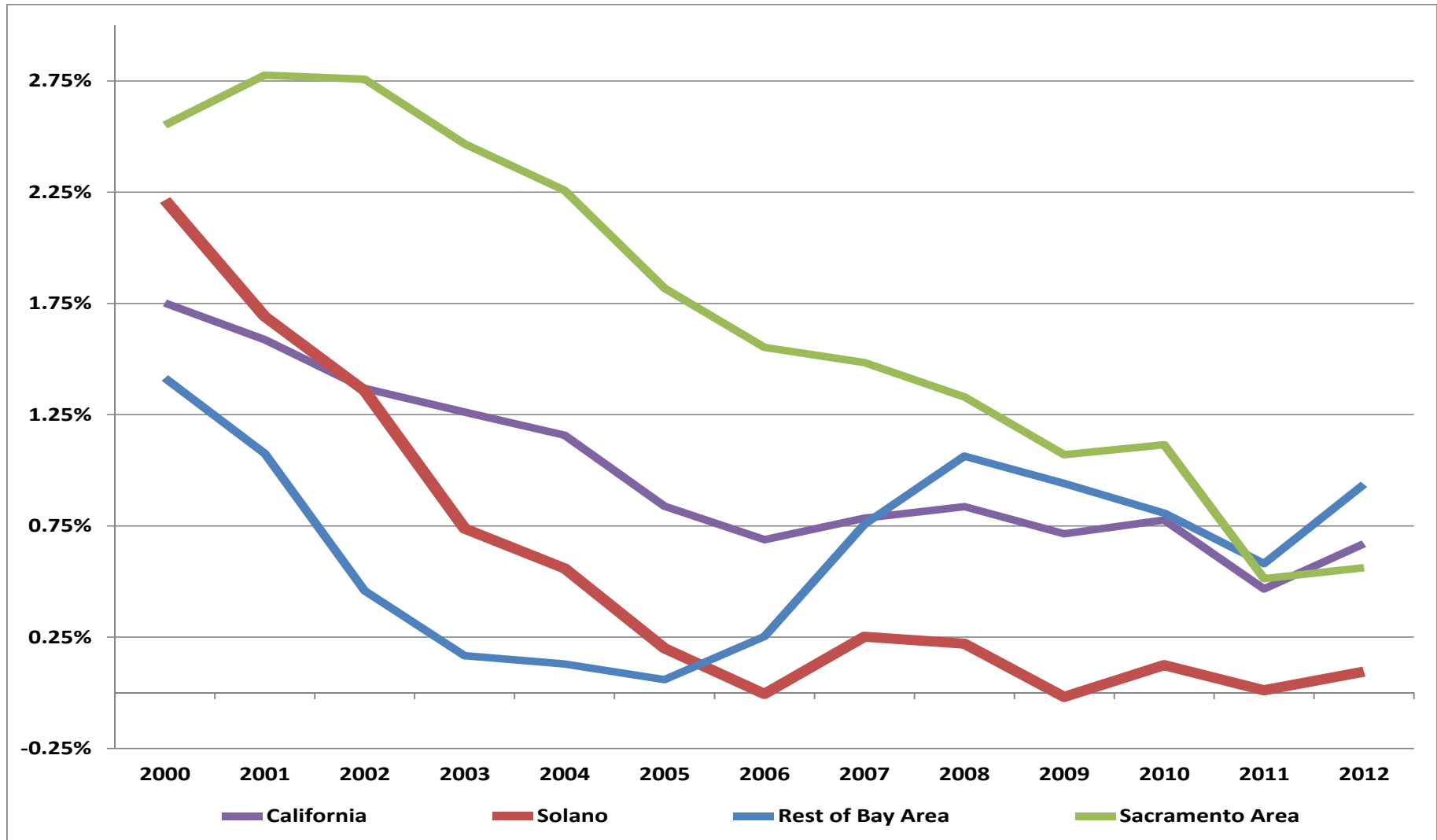
- Slow movement of housing prices a blessing and a curse
 - Housing prices rising provide more wealth, not necessarily income
- Standard of Living change illustrates aging and lower-income population
 - Economic development can help reverse these trends

Community Highlights

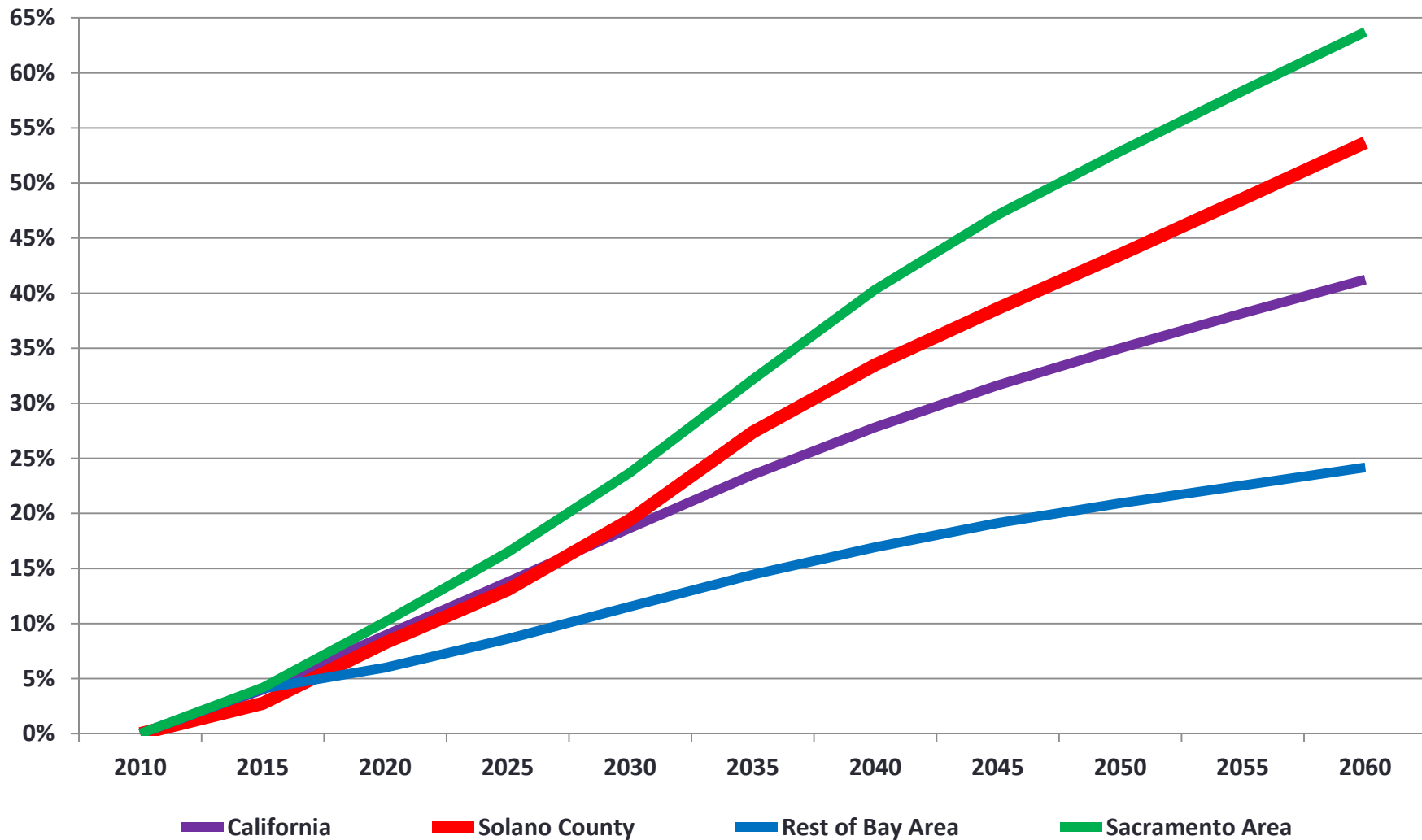


- Population
 - Rising proportion of higher age groups
 - Foreign immigration inbound is dominant population growth factor
- High school: mixed results
 - Decline in CSU/UC eligible students from high school
 - Decline in graduation rates
- Number of health-insured residents up
 - Affordable Care Act will impact these data
- Housing: prices up, foreclosures slow to fall
 - Growth slower than most of Bay Area, but 2013 looks good
- Government Revenue
 - Taxable sales and property tax revenue up: connected to income and job growth

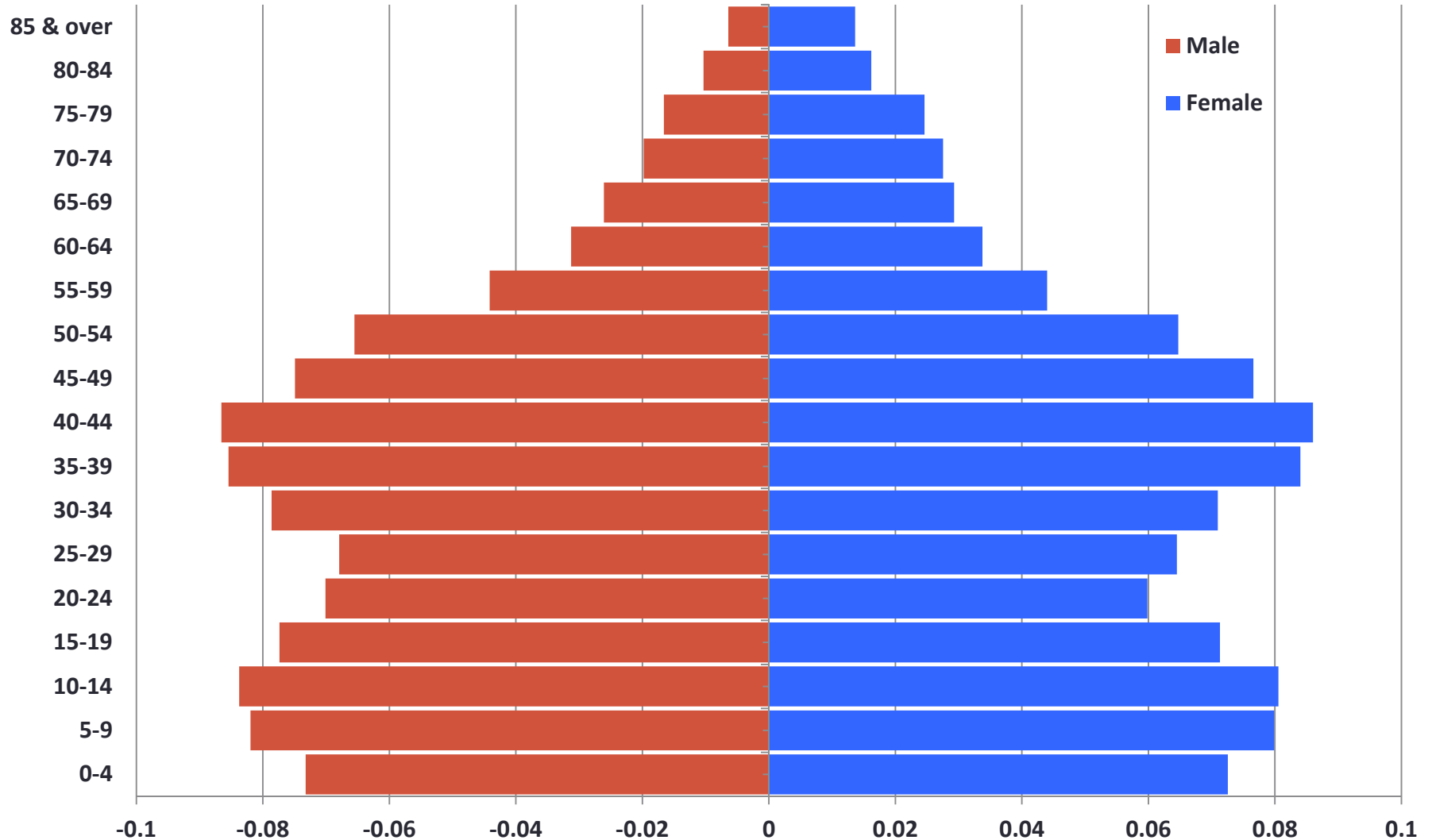
Population Growth (DOF): 2000-12



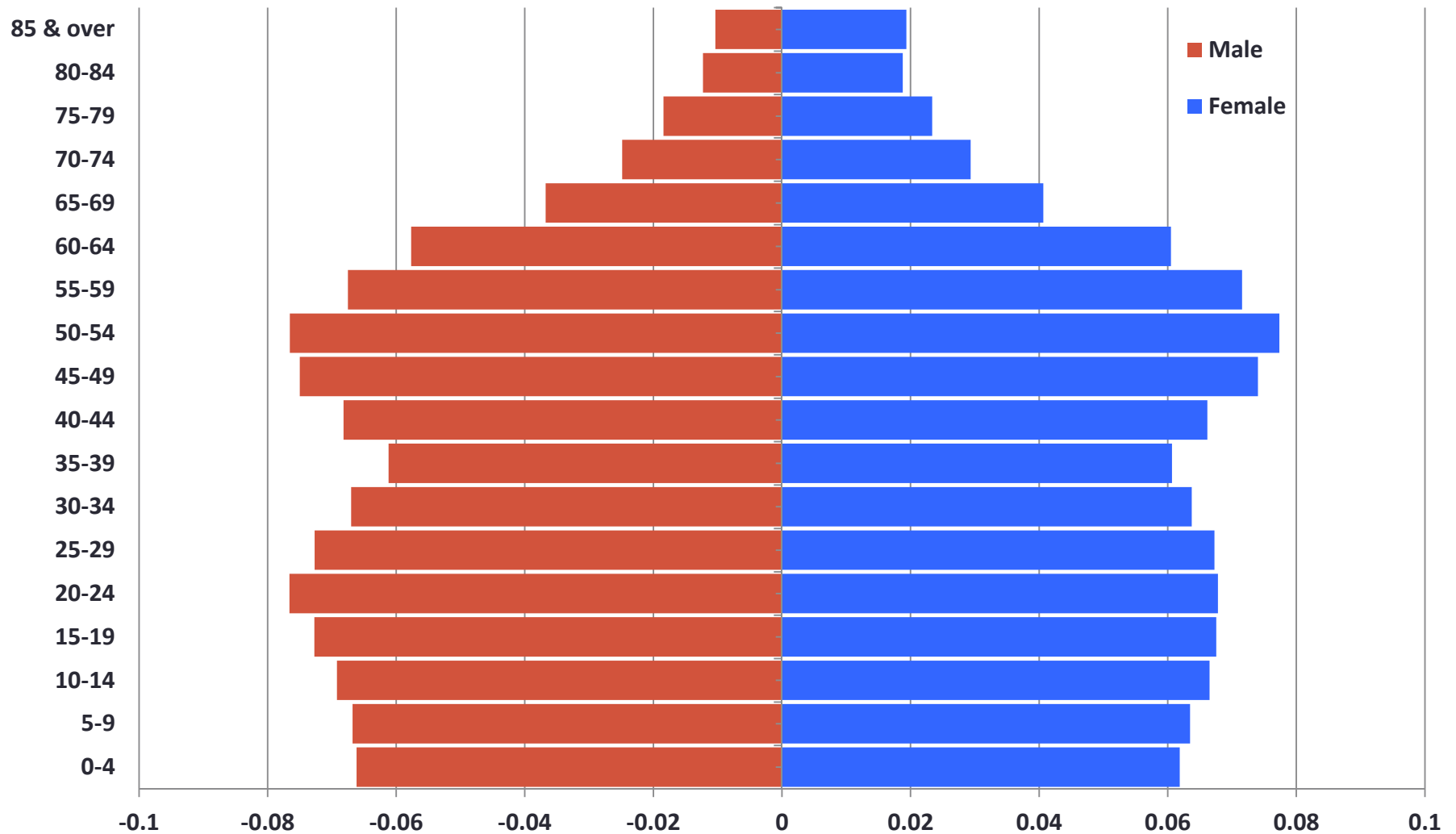
Population 2010-60 (DOF): Growth Rate



Population Pyramid 2000 (DOF)



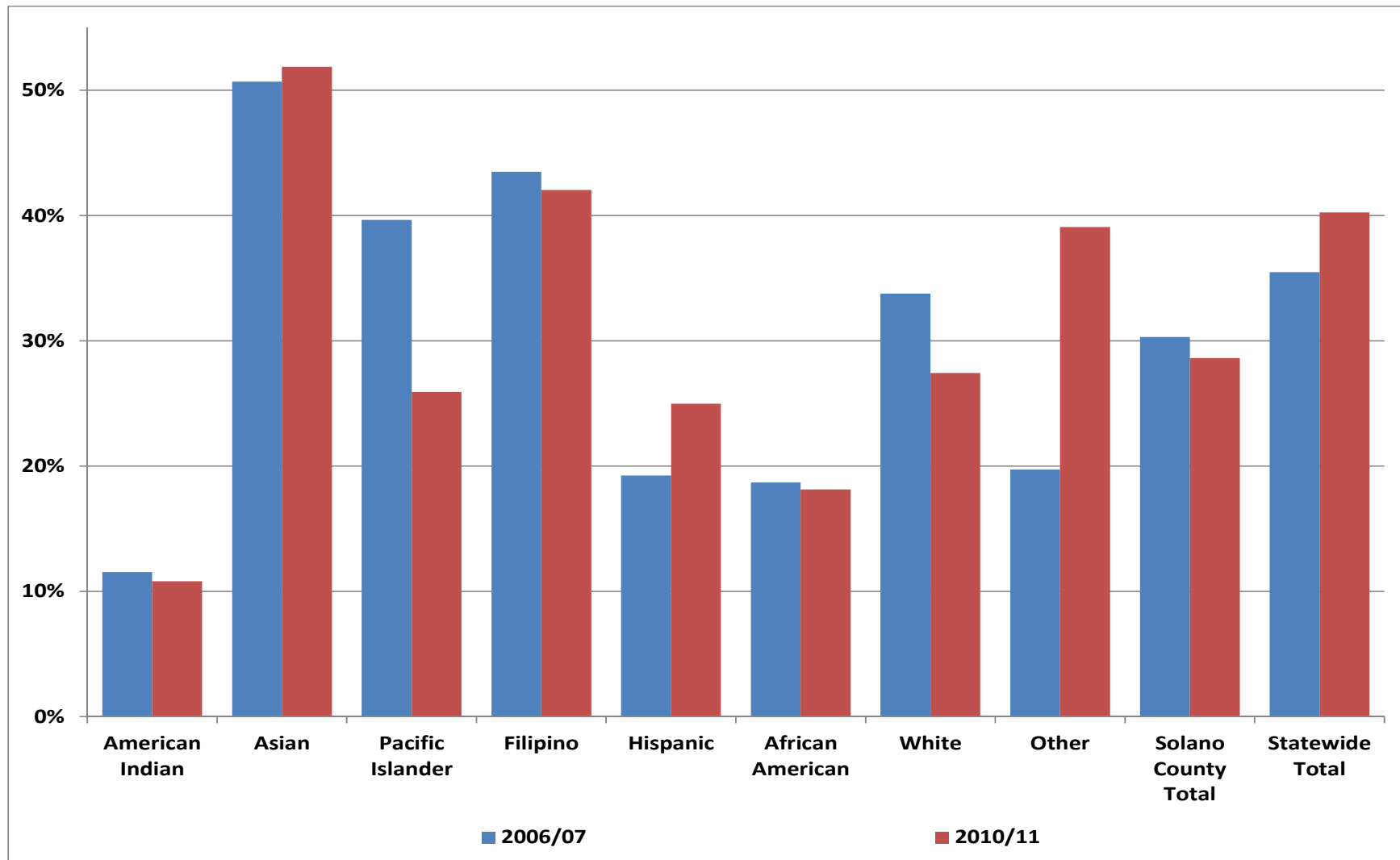
Population Pyramid 2011 (DOF)



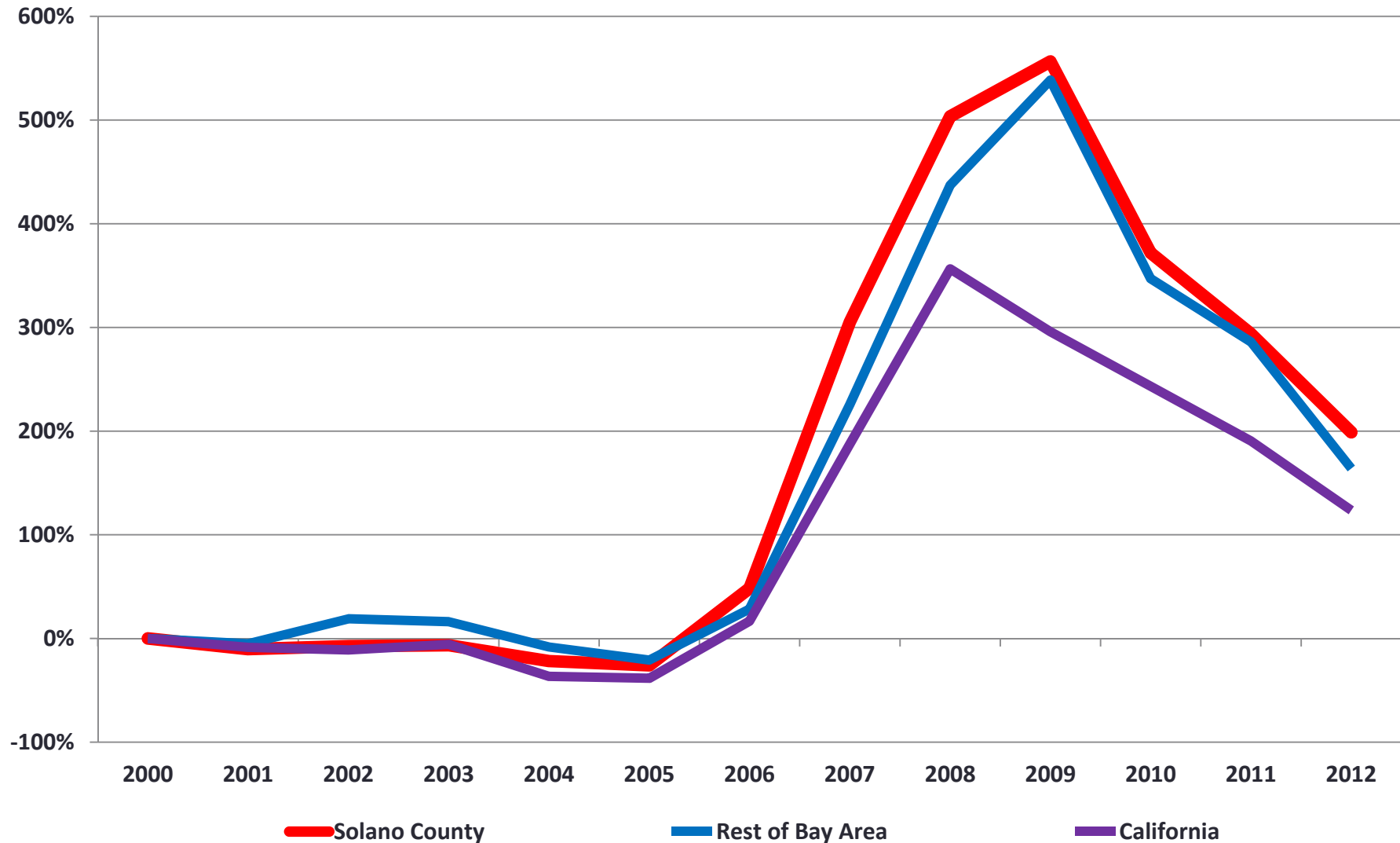
March 26, 2013

Index of Economic and Community Progress

CSU and UC Ready by Ethnicity (CDE)



Notices of Default (DataQuick): % Change from 2000



Community Progress: Considerations



- Foreclosure rates still relatively high
- Aging population pressures labor and housing markets
 - Solano's weather and location a blessing and curse
 - Downsizing on homes helps some industries and not others
 - If there are fewer local options for workers means, it implies that more labor is to be imported
- Health Care demand to continue to rise
 - Need to provide flexibility for growth of health care facilities
- Government revenues issues versus expenses
 - Current issues in federal down to city budgets unseen yet

Conclusions



- Solano County still needs to grow
 - Clusters identified, need to continue their pursuit
 - Assets to support growth of clusters: need to run parallel
 - 2013 should begin with good momentum
 - Federal and state reactions to budget issues will take some toll
- Community challenges remain and are threats
 - Local labor force: need to pipeline new workers
 - Foreclosure rates dropping, but not quickly: blessing and curse
 - Educational data point to more imported labor also



**SOLANO
COUNTY**



Questions?

Robert Eyler, Ph.D.

President, Economic Forensics and Analytics

PO Box 750641

Petaluma, CA 94975-0641

eyler@econforensics.com