

# UCCE Capitol Corridor Update

*Serving*

Solano, Sacramento and Yolo Counties



**UC  
CE**

**University of California**

Agriculture and Natural Resources | Cooperative Extension

# UCCE Solano County

- Founded in March 1915
- Community connection to UC resources
- Programs
  - Agricultural Production
  - Home Economics
  - Nutrition Education
  - Youth Development (4-H)
  - Science Literacy (4-H)
  - Home Gardening (MG)
  - Home Food Preservation (MFP)
  - Natural Resource Management
  - Small Farm Production
  - Integrated Pest Management



UC  
CE

University of California

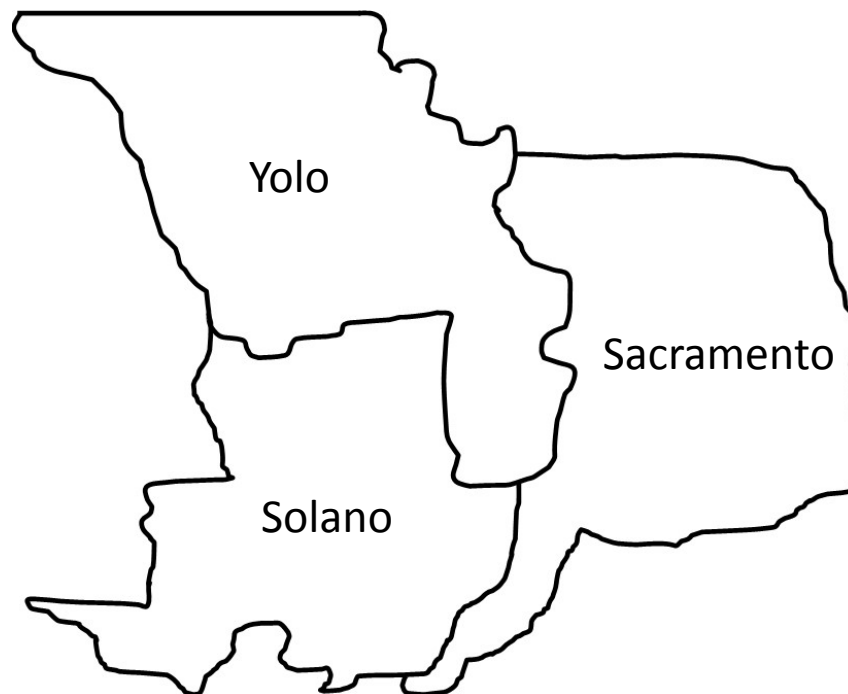
Agriculture and Natural Resources | Cooperative Extension

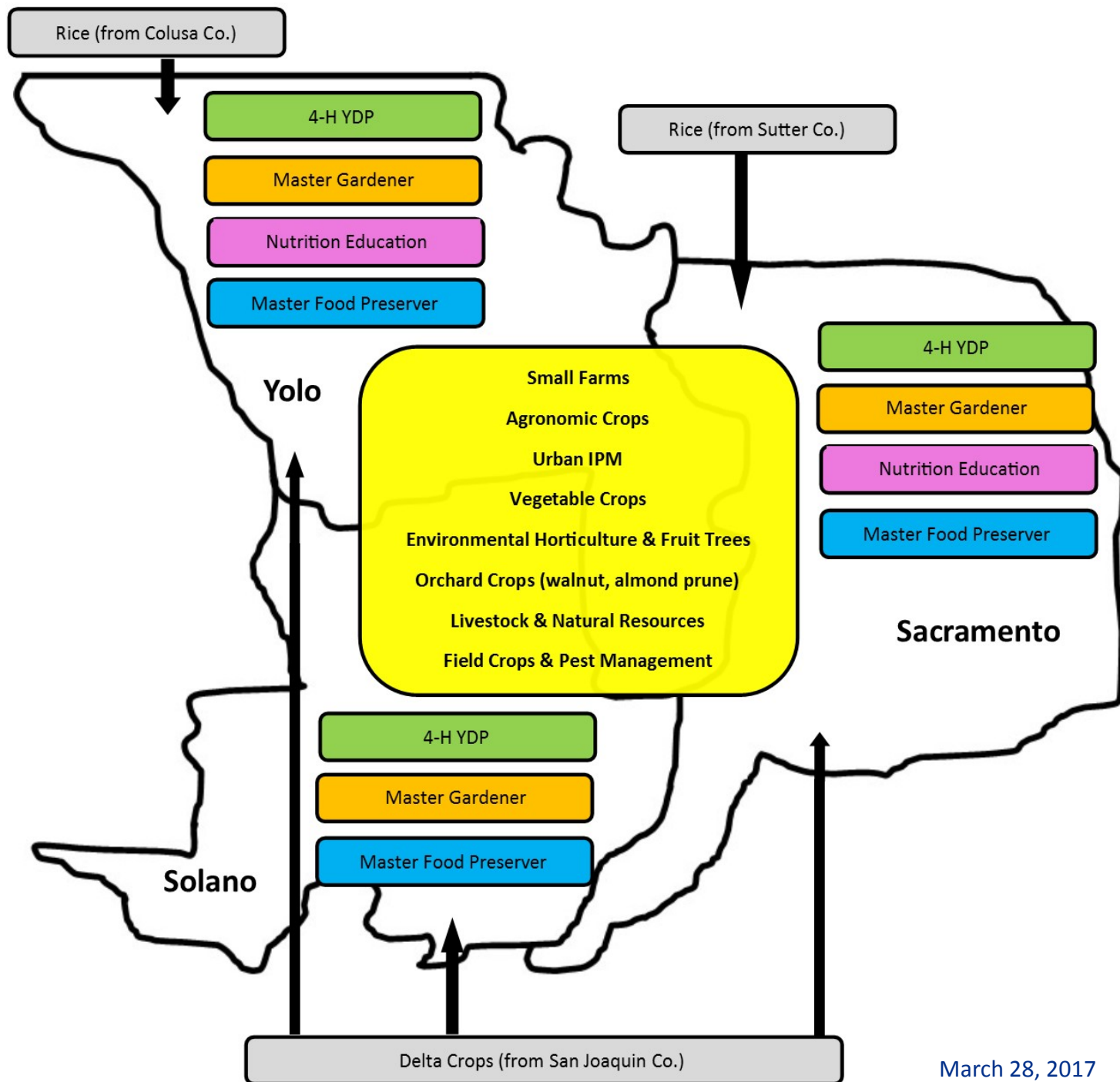
March 28, 2017

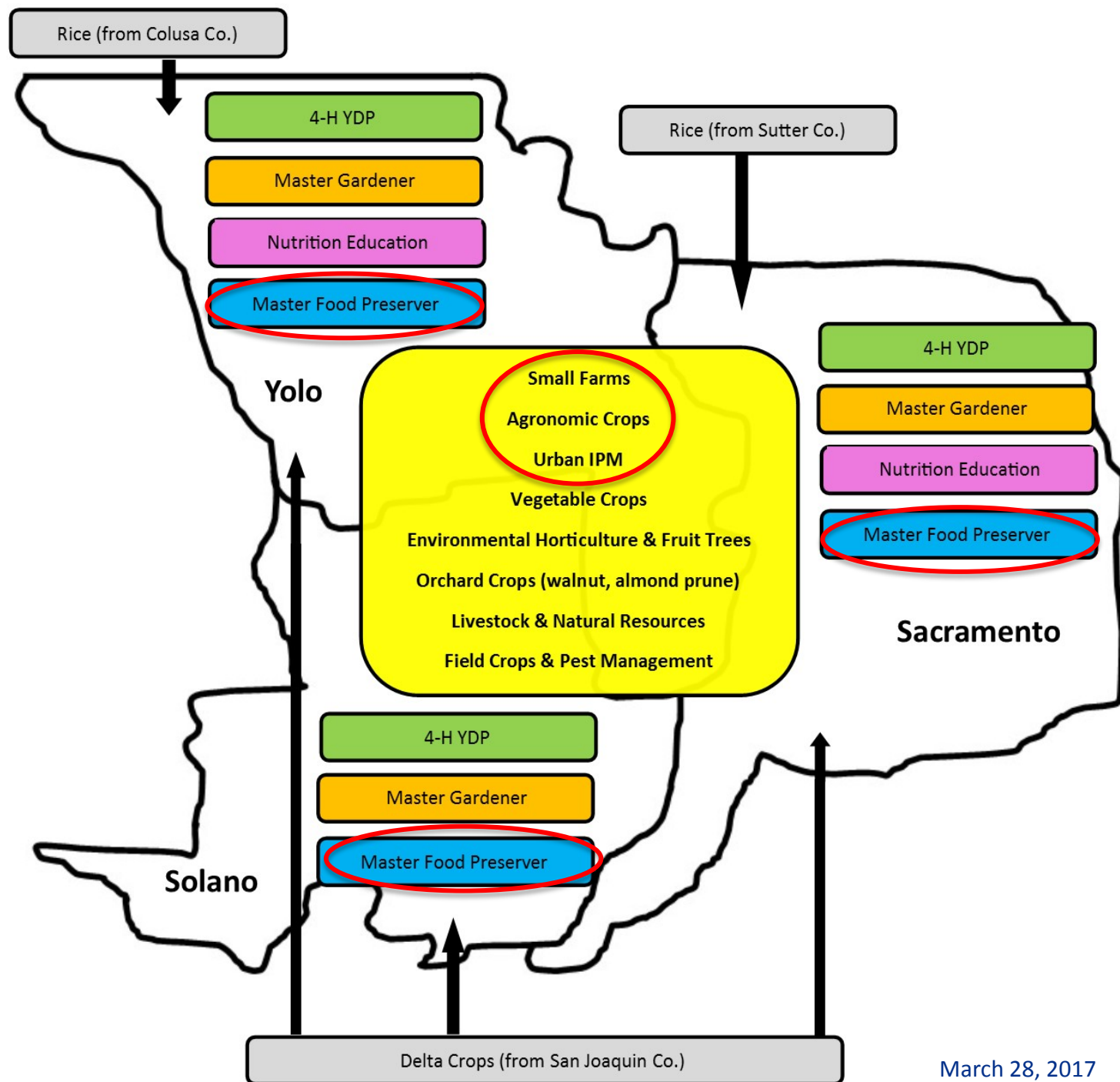
Page 2

# UCCE Capitol Corridor

- Multi-County Partnership
  - Administrative consolidation
  - July 2014
  - 5-year agreement
- Create administrative efficiencies
  - Improve program support, capacity & delivery







# FY 2015-16 Highlights

*Three-County Region*

- Personnel Profile
  - 38 total employees

Position Type	FTE
Academic Advisors	10
Program Support Staff	16
Admin. Support Staff	4
<b>Total</b>	<b>30</b>

- 9 FTE staff positions paid from MCP (county) funds



UC  
CE

University of California

Agriculture and Natural Resources

Cooperative Extension

March 28, 2017

Page 6



# FY 2015-16 Highlights

*Three-County Region*

- Ag. Programs
  - Invasive/noxious pests
    - Fusarium wilt-tomatoes
    - Botryosphaeria-walnuts
    - Fire blight-pears
    - Brown marmorated stink bug
    - Egyptian broom rape
    - Reduced-risk pesticides
    - Rangeland weeds



UC  
CE

University of California

Agriculture and Natural Resources | Cooperative Extension

March 28, 2017

Page 7

# FY 2015-16 Highlights

*Three-County Region*



- Ag. Programs
  - Production
    - Grafted tomatoes
    - Strawberry growers
    - Poultry manure-tomatoes
    - Tree rootstock
    - Dry beans
    - Rice straw as livestock feed



UC  
CE

University of California

Agriculture and Natural Resources | Cooperative Extension

March 28, 2017

Page 8



# FY 2015-16 Highlights

*Three-County Region*

- Ag. Programs
  - Natural Resources
    - Irrigation efficiency
    - Rangeland water quality
    - Nutrient management
    - Crop pollination and bee health
    - Hedgerows & food safety



UC  
CE

University of California

Agriculture and Natural Resources | Cooperative Extension

March 28, 2017

Page 9

# FY 2015-16 Highlights

*Solano County*

- Master Gardener
  - 133 certified volunteers
  - Reached 10,263 residents
  - Outreach to CA Tribal Temporary Assistance for Needy Families
  - Outreach at Kaiser Vallejo Cancer Survivors Day



*Greenhouse rejuvenation at Liberty High School, Benicia.*



**UC  
CE**

**University of California**

Agriculture and Natural Resources ■ Cooperative Extension

# FY 2015-16 Highlights

*Solano County*



National Youth Science Day, Motion Commotion activity

- 4-H Youth Development
  - 196 adult volunteers
  - Reached 4,300+ youths
  - Increasing diversity
  - Tri-county integration
    - Camp
    - Projects
  - SET Program
    - 787 elementary students in 13 sites
    - 41% Hispanic participation



**UC  
CE**

**University of California**

Agriculture and Natural Resources ■ Cooperative Extension

March 28, 2017

Page 11



# FY 2015-16 Highlights

*Solano County*



- Master Food Preserver
  - Increased interest in home food preservation
  - Program Coordinator started in August 2016
  - 10 certified volunteers graduated in 2016
  - Next training class in 2017



UC  
CE

University of California

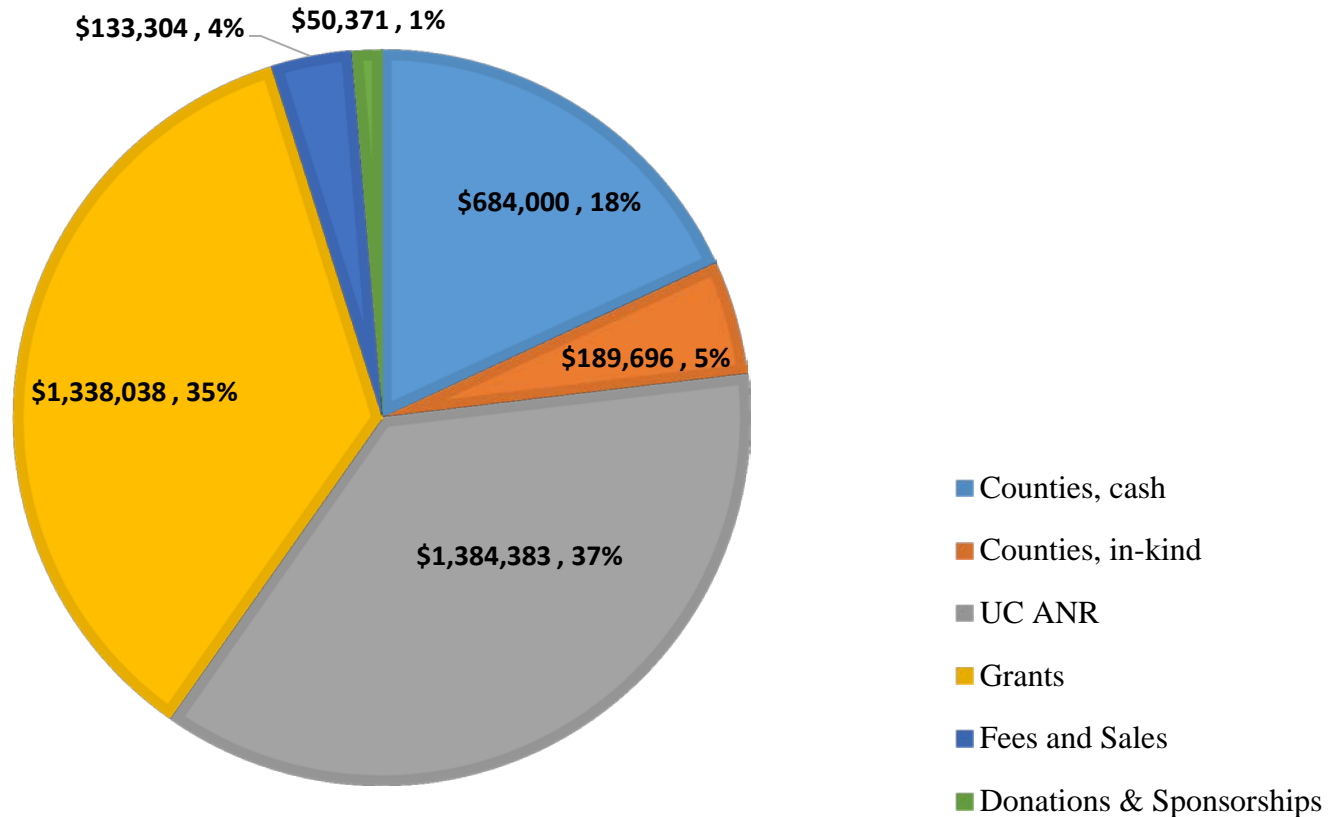
Agriculture and Natural Resources | Cooperative Extension

March 28, 2017

Page 12

# FY 2015-16 Highlights

*Three-County Region*

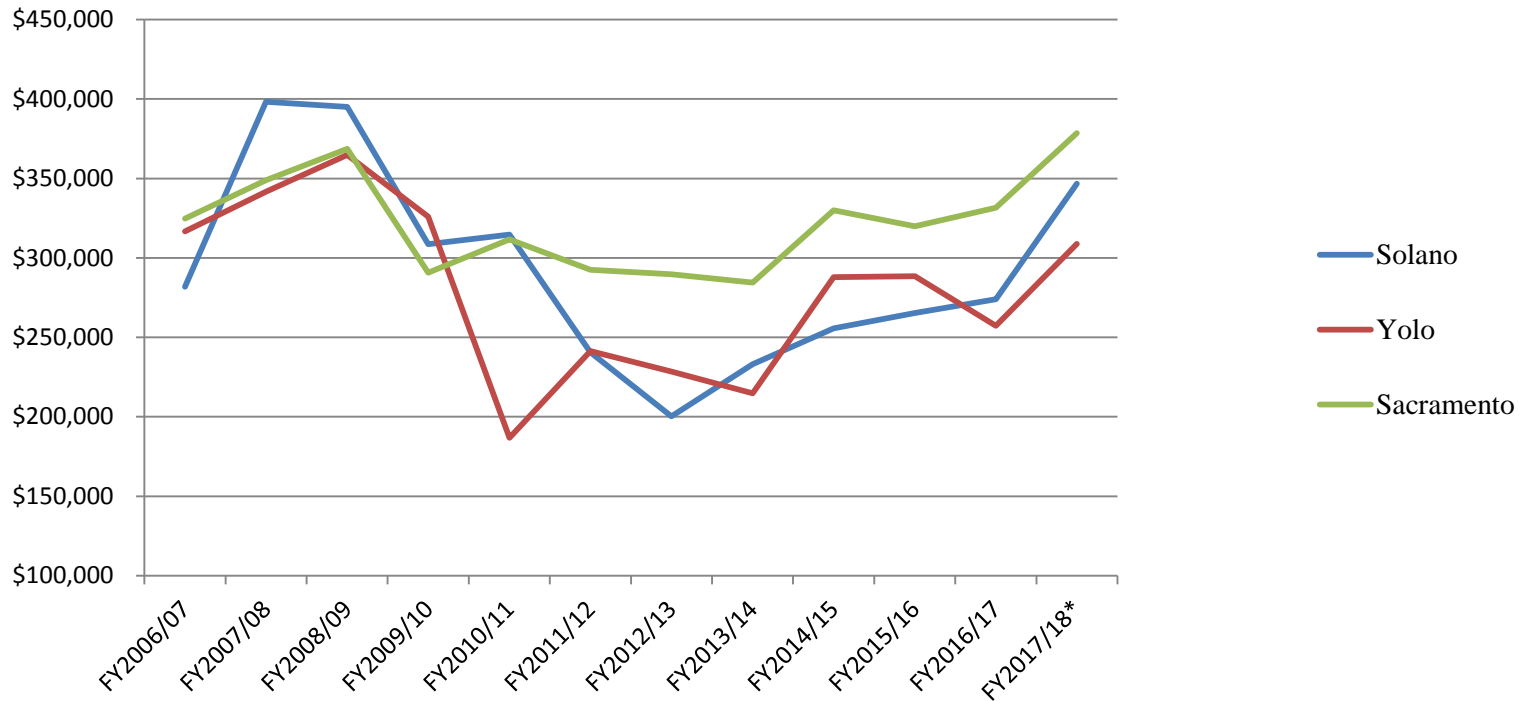


**University of California**

Agriculture and Natural Resources | Cooperative Extension



# County Contributions, 2006-2017



# Challenges

- MFP Program
  - Difficulty with 0.5 FTE position
- Recruitments
- Right-fitting MCP admin. structure within ANR's constraints and ability to provide centralized support
- Connecting with county partners



# Outlook

- New ANR leadership
  - New ANR Strategic Initiative
- Academic positions
  - Health Equity / Youth Development Advisor
  - Viticulture and Fruit Advisor
  - Nutrition Advisor?
- Continuing to refine operations
- Future Space for UCCE in Solano County



UC  
CE

University of California

Agriculture and Natural Resources | Cooperative Extension

<http://cecapitolcorridor.ucanr.edu/>

# THANK YOU



**UC  
CE**

**University of California**

Agriculture and Natural Resources ■ Cooperative Extension

March 28, 2017

Page 17