



Sustainable Groundwater Management Act (SGMA)

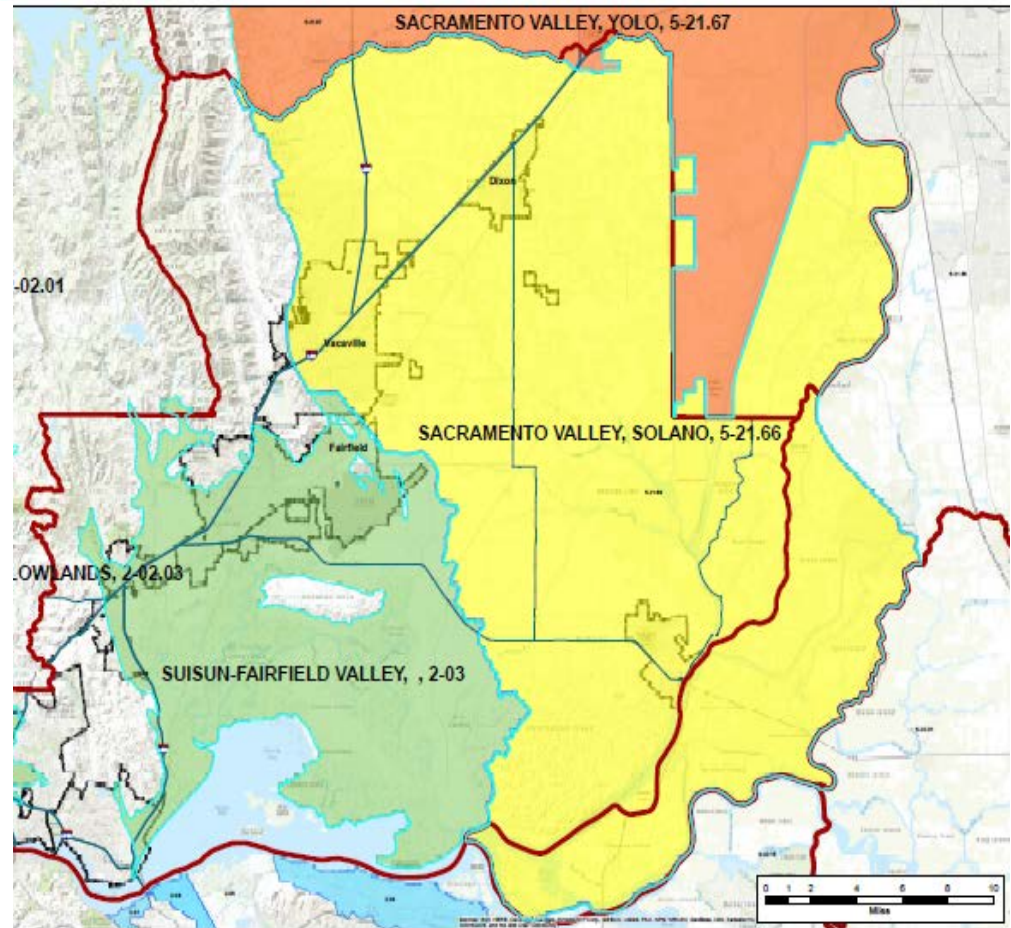
- Status of Groundwater Sustainability Agency (GSA) Formation Process in Solano County
- Set public hearing to consider GSA Formation in SID Service Area

Solano County Board of Supervisors
April 11, 2017
Department of Resource Management



SGMA Overview

- Effective January 1, 2015
- Requires forming groundwater sustainability agencies and plans in medium and high priority basins
- Emphasizes local control
- Creates State “backstop”
- Defines timeframes to accomplish goals





Key SGMA Requirements

- **June 30, 2017:** Form Groundwater Sustainability Agencies (GSAs)
 - Public Outreach
 - Application to Dept. of Water Resources (DWR) – activates 90 day notification
- **January 31, 2022:** Adopt Groundwater Sustainability Plans
- Achieve Sustainability within 20 years after GSP Adoption

Step 1

**Form local
Groundwater
Sustainability
Agency (GSA)**

June 30, 2017

Step 2

**Adopt
Groundwater
Sustainability
Plan (GSP)**

Jan. 31, 2022

Step 3

**GSA achieves
groundwater
sustainability
goal**

20 years after
GSP adoption



Groundwater Sustainability Agency (GSA)

- Any *local agency* or combination of agencies overlying a basin or subbasin can elect to be a GSA
- Local agency is any public agency that has water supply, water management, or land use responsibilities within a groundwater basin
- Any local agency or combination of local agencies may decide to become a GSA
- GSA must be formed by June 30, 2017 to prevent state intervention of the area



GSA Formation Process

- **Publication of Public Hearing** 10 days prior to public hearing
- **Hold Public Hearing** on decision to form GSA
- **Submit Notice of Intent and GSA Application** to Dept. of Water Resources within 30 days of decision to become a GSA
- **DWR posts GSA application for 90 days** before approval
- **Any overlap will prevent GSA Approval**



Solano Subbasin GSA Formation Process

Collaborative Efforts – Multi-Year Process

30+ meetings – working group of GSA-eligible agency staff and stakeholders

7 public/community input meetings – GSA governance recommendations

Recommendations:

- Single GSA for the Solano County portion of the Solano Subbasin
- 15 members including 2 Ag public seats
 - March 2017 – JPA Agreement met by most of the working group except SID
 - Group Recommended GSA: 14-Members, excluding SID
 - Covers most of County portion of Subbasin
- ✓ Early 2017 – SID Adopted 2-Path Approach
 - Continued with multi-agency GSA formation
 - Applied as SID GSA in their service district (unincorporated area)



Solano Subbasin – GSA Formation



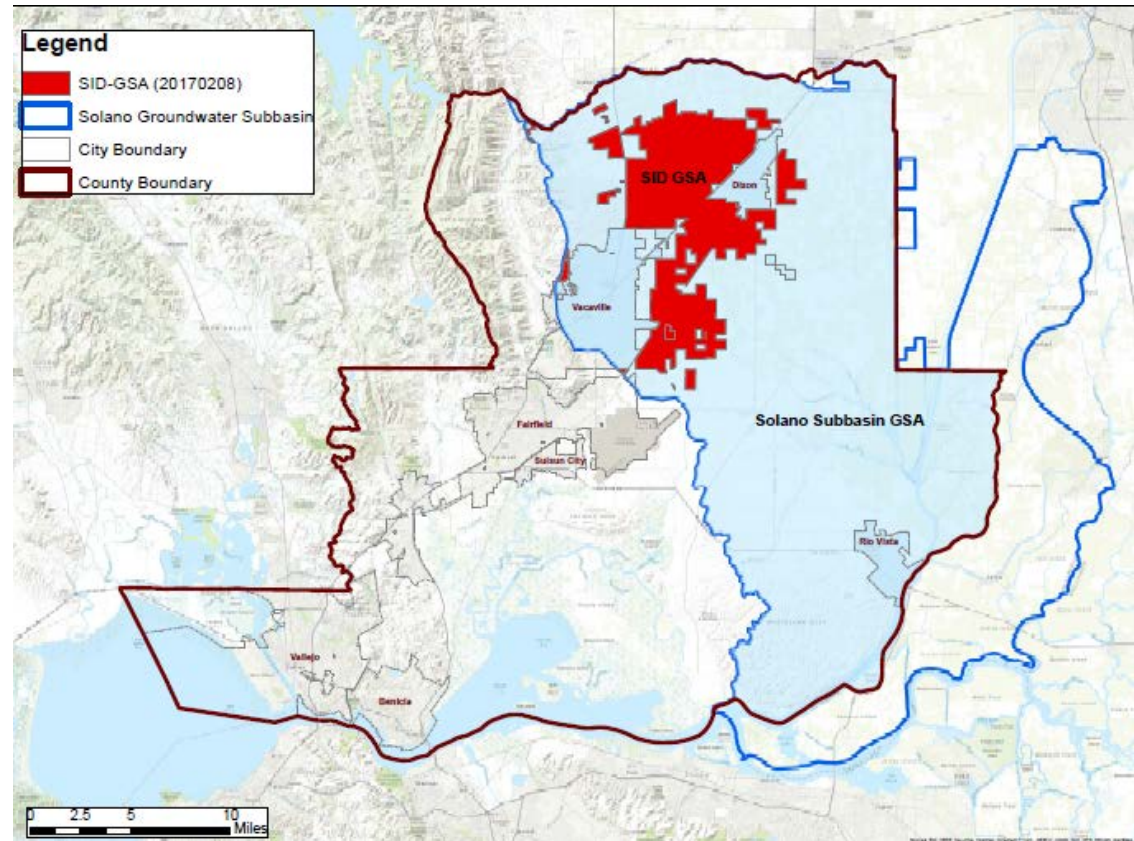
Solano Subbasin GSA – Multi Agency GSA

- Joint Powers Authority (JPA)
- Covers most of the Subbasin
- 14 members - County, Cities, Water Districts, RCDs, & 2 Public Ag Seats

Solano Irrigation District (SID) GSA – Single Agency

- Unincorporated SID Area
- Exclusive on **May 23, 2017** if no other agency submits application over the area.

April 11, 2017

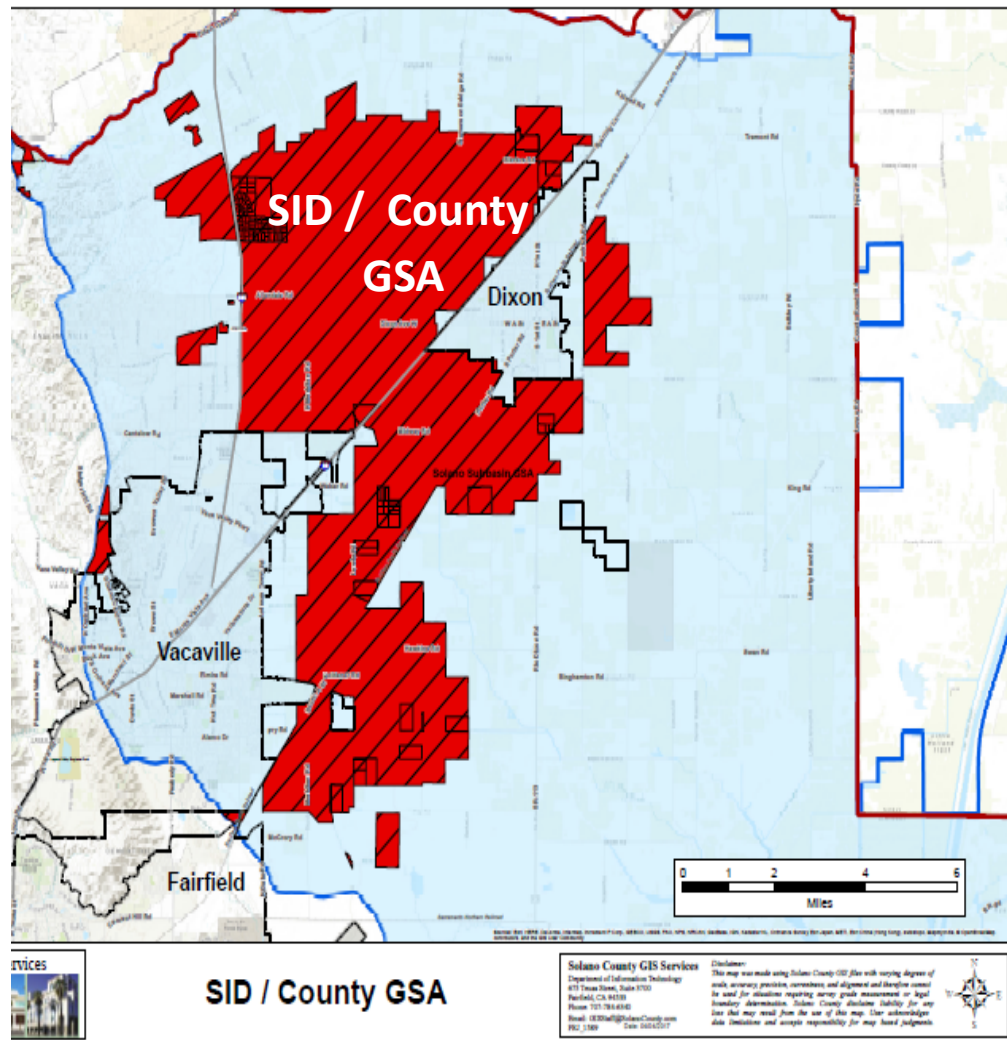


SGMA Update



SID GSA / County GSA (Overlap)

- Preserves County's ability for involvement in the SID area
- Allows continued negotiations with SID for joint management
- SID has expressed interest in this arrangement
- Overlap not resolved by June 30, 2017, may result in State Board intervention for the entire subbasin





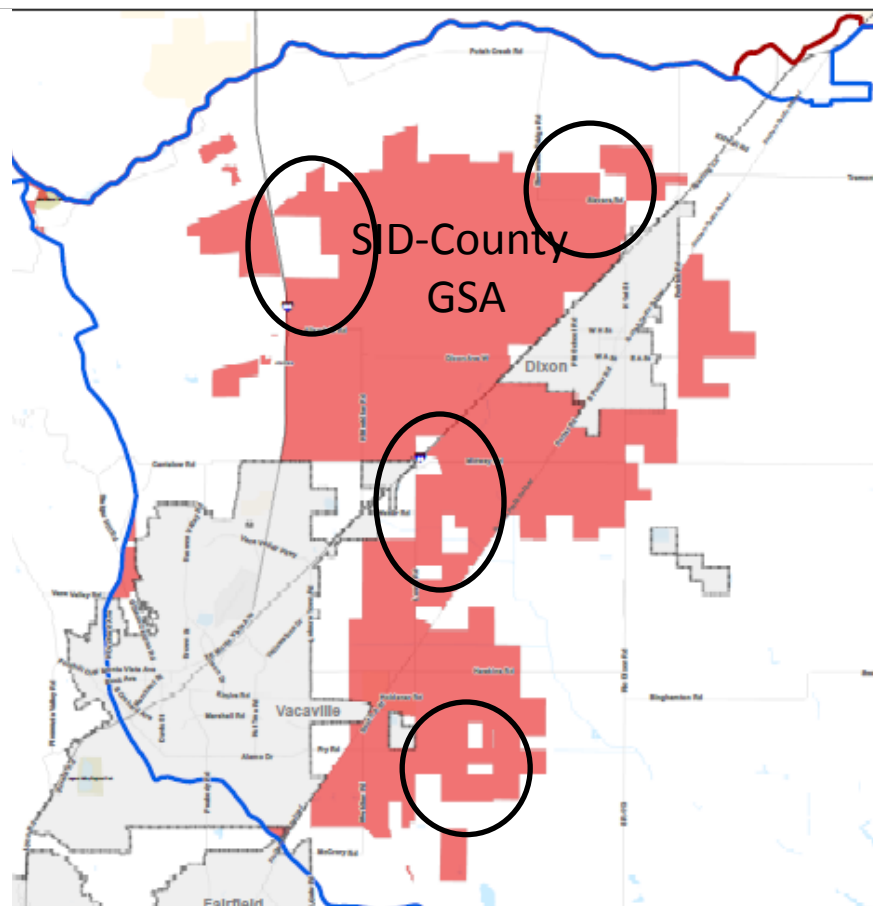
Combined Management SID-County GSA

Benefits

- County participation throughout the Subbasin.
- Continuity with adjacent GSA.
- Management of Isolated "Islands".

Challenges

- County in multiple GSAs requiring additional resources.
- Coordinating with multiple GSAs.





SWRCB Intervention

July 1, 2017 - Unmanaged Area

- No GSA Formed - Overlapping GSAs
- Pumpers Extracting > 2 Acre Ft. Report to State Water Board
- Reporting and fees waived by State Board if GSA formed by Oct 1, 2017



Oct. 1, 2017 - Probationary Subbasin

- No GSA Formed in Unmanaged Area(s)
- State May Designate Entire Subbasin Probationary
- All Pumpers Report to State Board & Pay Fees
- State Develops Interim Plan
- Higher Fees



Next Steps – Solano Subbasin GSA

Solano Subbasin GSA (Multi-agency JPA)

- **May - June 2017: County Board Approves multi-agency JPA**
- **June 8, 2017 (tentative): Public Hearing of GSA**
 - GSA Application to DWR – Submitted by SCWA
 - GSA established 90 days after acceptance by DWR
State Board will not intervene during 90 day waiting period



Next Steps County – SID GSA

- **Establish County GSA (Overlap SID GSA)**
 - **May 2, 2017: Hold Public Hearing**
 - **By May 8, 2017: Submit GSA Application to DWR**

- **Establish Joint Management SID-County GSA**
 - **April - June 2017: Adoption of SID/County JPA**
 - Withdraw separate SID GSA & County GSA Applications



Today's Recommended Action

- **Set Public Hearing - May 2, 2017 at 2:00 pm** to establish Solano County GSA