



Solano County Human Services Needs Assessment

Briefing of Preliminary Results

Presented to the Solano County Board of Supervisors
April 23, 2019

Presenters: Michele Harris, MPA, Executive Director, First 5 Solano
Lisa Niclai, MA, Vice President of Evaluation, Applied Survey Research





Overview of the Project

Goal:	<ul style="list-style-type: none">Identify the greatest unmet human service needs across the county, and identify best practices and strategies to address the needs, given limited resources.
Phase 1:	<ul style="list-style-type: none">Collect Indicator Data on community wellbeing.
Phase 2:	<ul style="list-style-type: none">Conduct Key Informant Interviews with community leaders.
Phase 3:	<ul style="list-style-type: none">Conduct Community Survey with community partners and residents.
Synthesis & Reporting	<ul style="list-style-type: none">Briefing for Board of SupervisorsSummarize assets and best practicesCreate Outcomes FrameworkDiscuss funding allocations per priority needPresent final report to Board of Supervisors



Framework for Assessing Needs

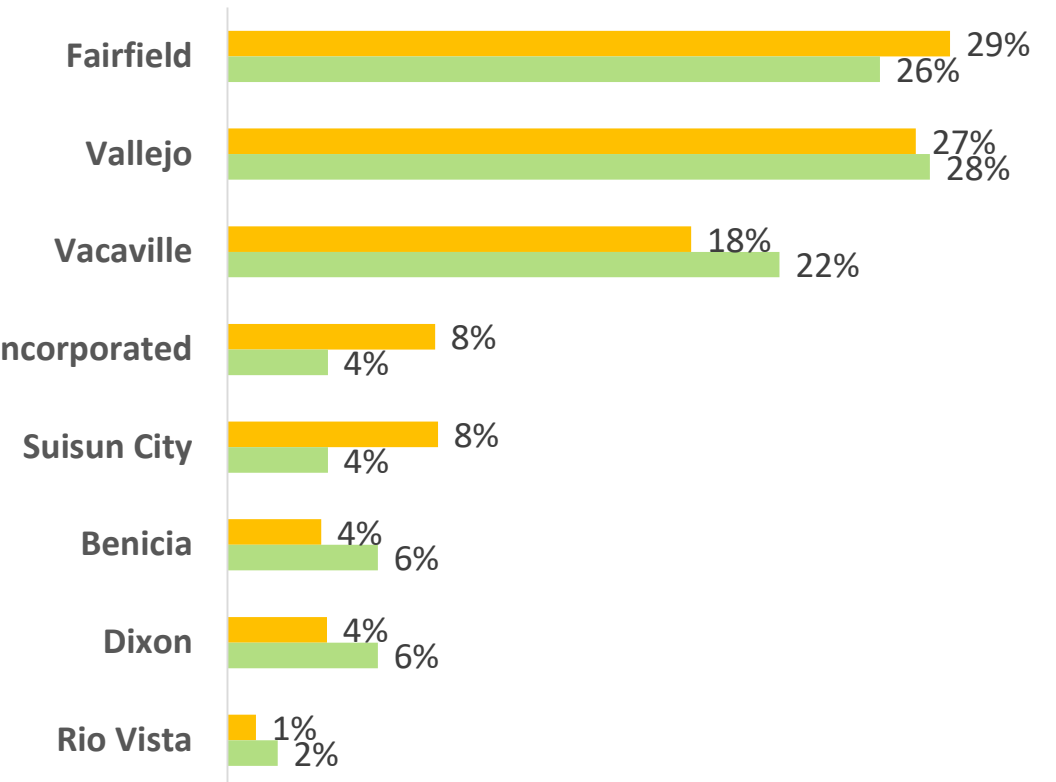
Life Stage	Domain
Children are born healthy.	Birth Outcomes
Children have optimal development.	Early Education
	Stable and Secure Environments
Children succeed in school and are prepared for the future.	Academic Performance
	Chronic Absenteeism
	Youth Development
Residents are productive and self-sufficient.	Employment and Income
	Public Assistance and Basic Needs
	Housing and Homelessness
	Veterans' Wellbeing
Residents are healthy and safe.	Healthy Eating / Active Living (HEAL)
	Basic Health Care
	Public Safety
	Mental Health
	Substance Use
Older adults are safe, healthy, and independent.	Independent Living
	Safety
	Health



What have we accomplished?

Phase 1:	Collected Indicator Data on 85 community wellbeing indicators across the life course
Phase 2	Conducted 31 Key Informant Interviews with 43 Solano community leaders <ul style="list-style-type: none">• Public sector leaders from each city• County agency leaders• CBO leaders
Phase 3:	Conducted Community Survey with 870 Solano community leaders and residents.

**Population by City,
Survey Respondents vs. Overall Population**

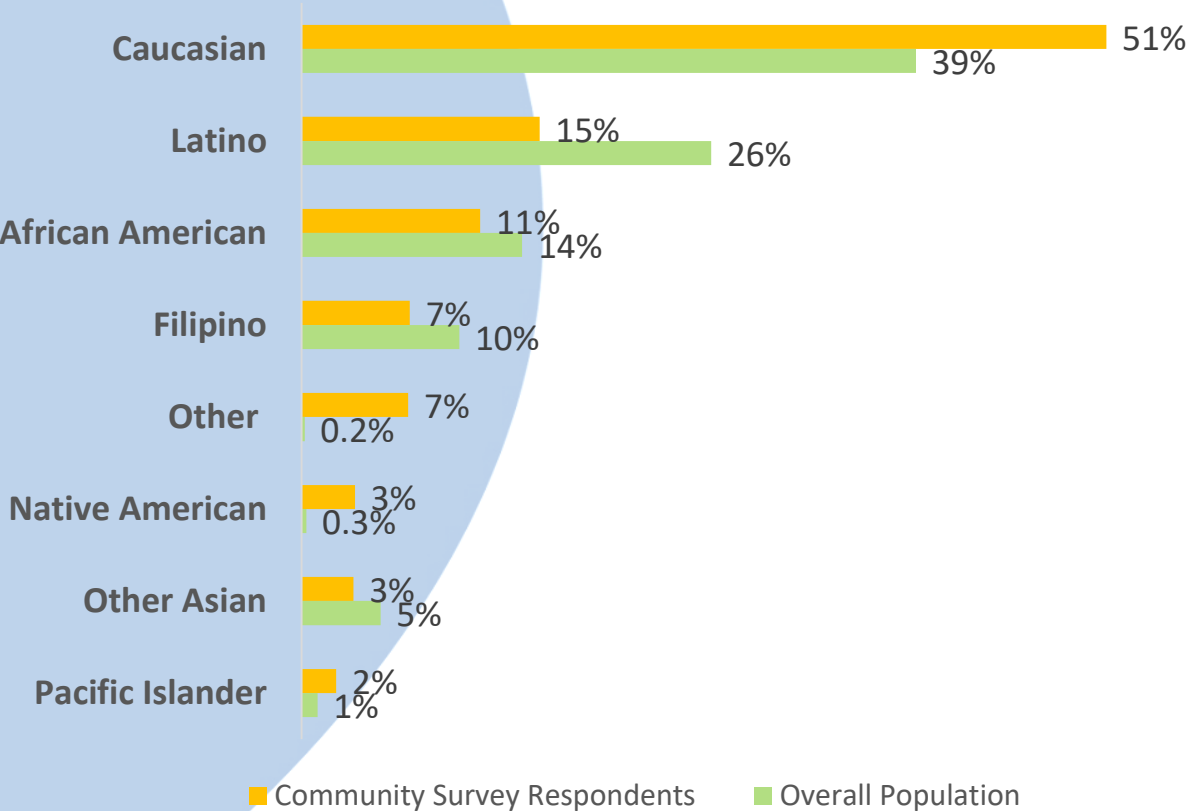


■ Community Survey Respondents ■ Overall Population

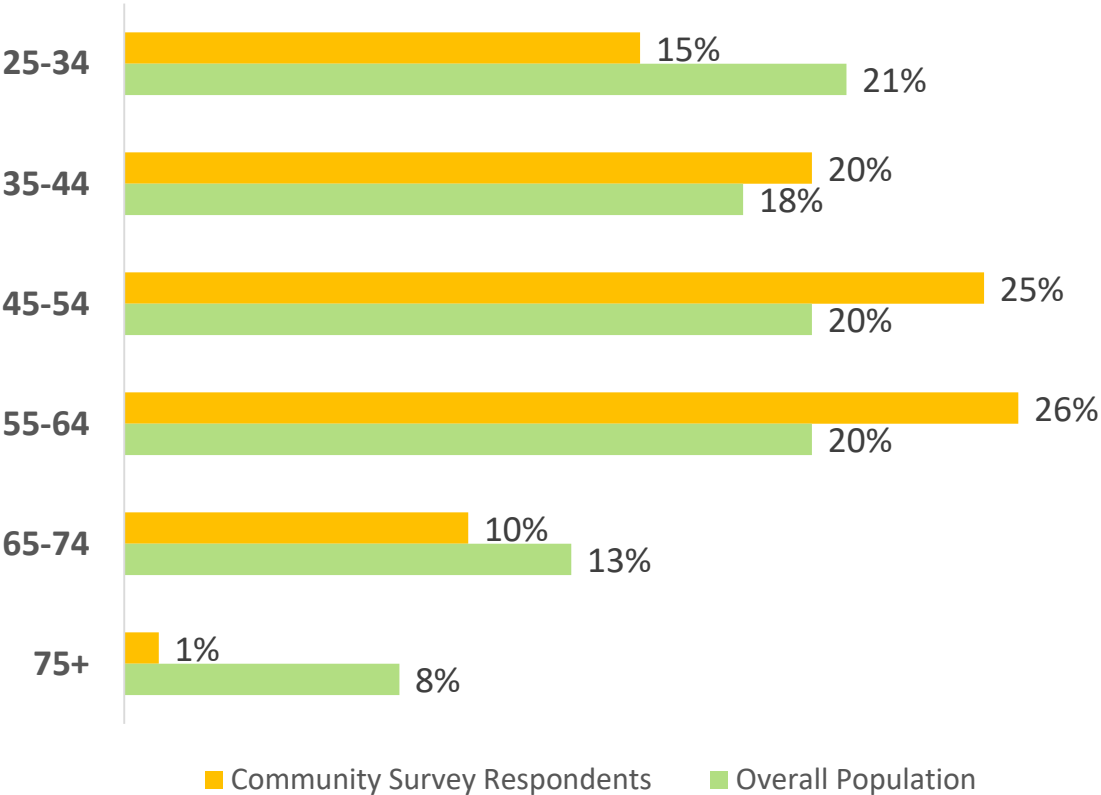


What have we accomplished?

**Ethnicity,
Survey Respondents vs. Countywide Profile**



**Age,
Survey Respondents vs. Countywide Profile**





How did we evaluate human service needs?

Severity

Community
Priority

Impactability

Criteria	Data Source
1. Unfavorable trend	Community Indicator data
2. Prevalence of need	Community Indicator data
3. Key Informant priority	Key Informant data
4. Community Stakeholder priority	Community Stakeholder data
5. Planning Team priority	Planning Team
6. Can we leverage existing assets/strategies?	Key Informant data and literature review
7. Is there political will to make a change?	Planning Team
8. Can we show short-term progress in one year?	Planning Team

Priority Human Service Needs – 3 Community Data Sources

85 Community Indicators revealed:

- 1. Healthy Eating / Active Living
- 2. Mental health**
- 2. Early education
- 2. Public assistance/ basic needs
- 3. Academic performance
- 4. Youth development
- 4. Affordable housing**
- 4. Homelessness**
- 4. Substance use
- 4. Birth outcomes
- 4. Public safety

43 Key Informants said:

- 1. Mental health**
- 2. Affordable housing**
- 3. Homelessness**
- 4. Employment & income
- 5. Substance abuse

870 Community leaders & residents said:

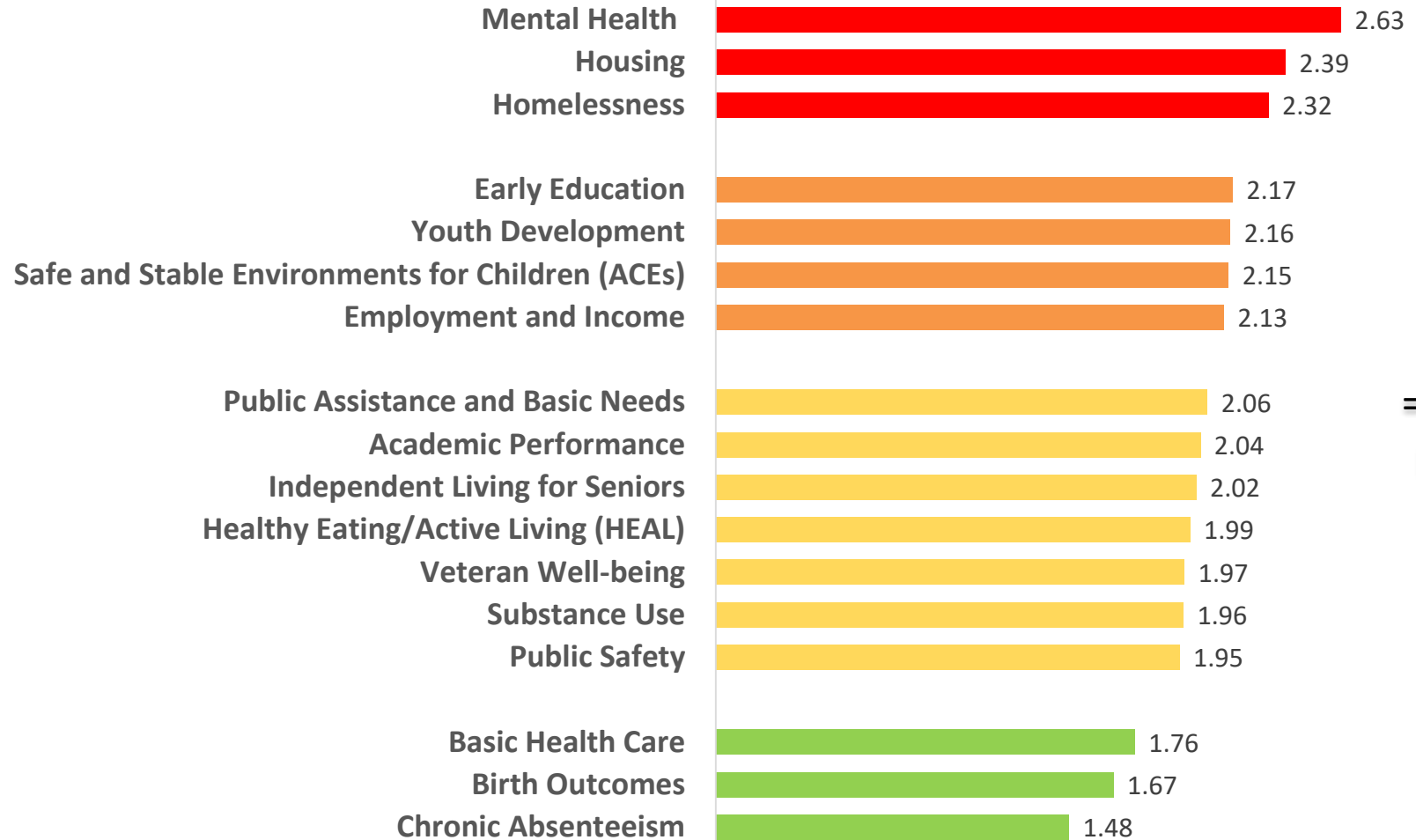
- 1. Safe, stable environments for children
- 2. Homelessness**
- 3. Employment & income
- 4. Affordable housing**
- 5. Mental health**



Priority Human Services Needs – All Data Sources

Criteria:

1. Unfavorable trend
2. Many people affected
3. Leader priority
4. Community priority
5. Planning team priority
6. Available assets
7. Will / commitment for change
8. Ability to show change

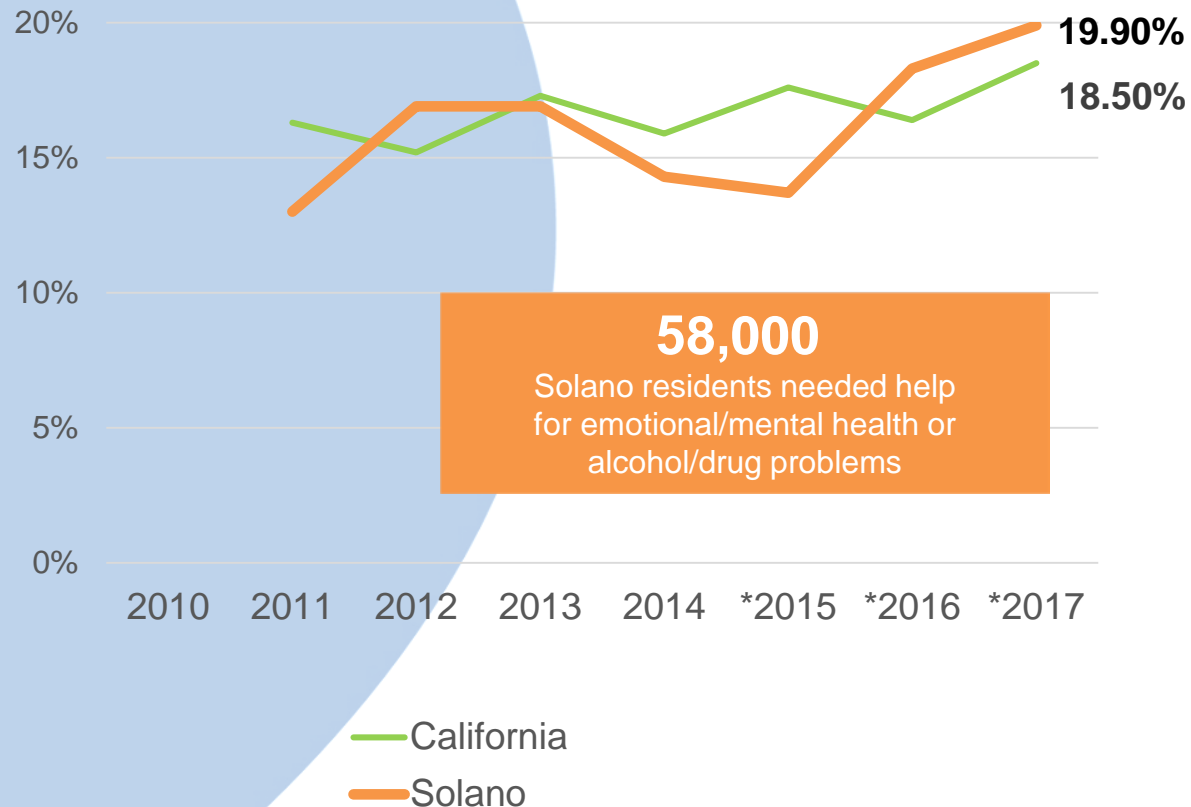


3
= highest
priority



#1 Top Need: Mental Health

Percent of Adults with Mental Health Impairment



■ More mental health resources:

- At schools: “There has been an explosion of student and family mental health needs over my (decades long) career.”
- Need more clinicians and crisis beds: “Our Crisis Unit has 19 beds total... only for a 24 hour period... we’re always diverting to ERs and hospitals who aren’t equipped to address these patients long-term.”

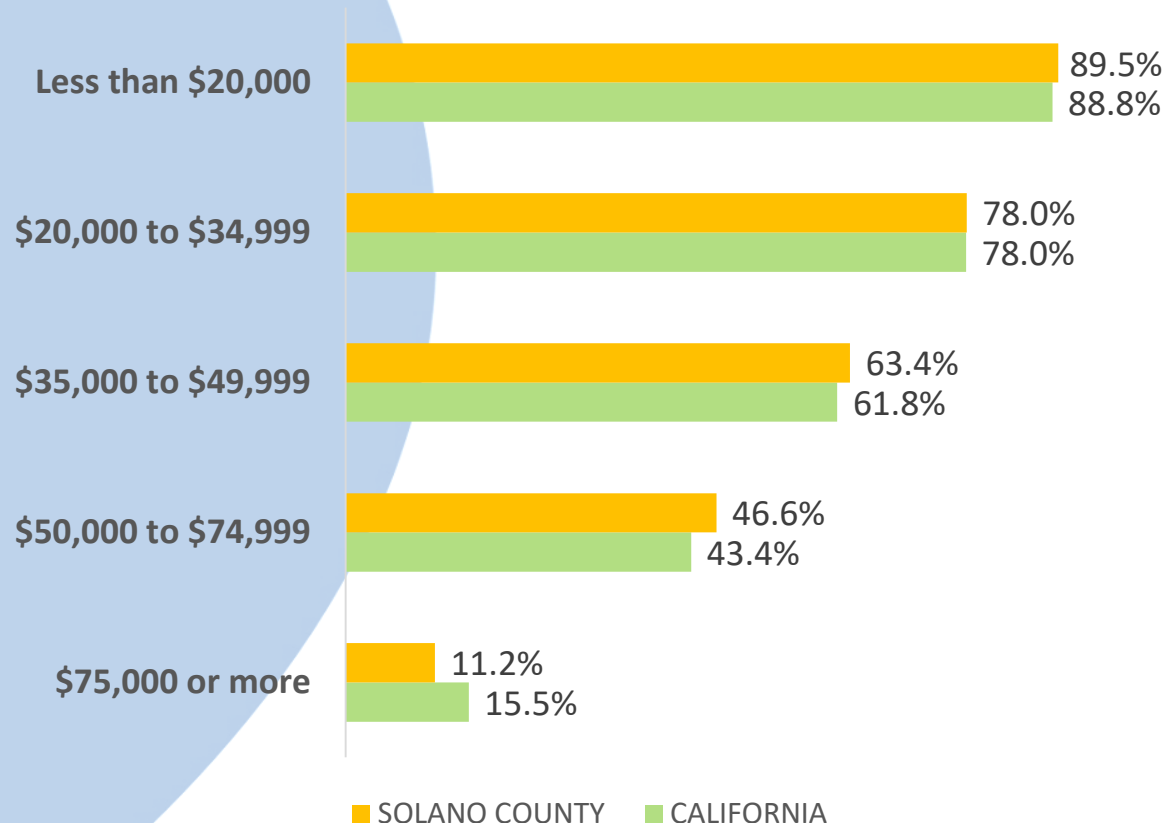
■ Need community-based continuum of care:

- **Mobile crisis teams** are a top need. “Teachers, police, and fire department staff “are not trained as mental health experts... there is no place where we can refer these people in crisis, and they fall through the cracks.”



#2 Top Need: Housing

Percent of Households Spending 30% or More on Housing, by Income Level

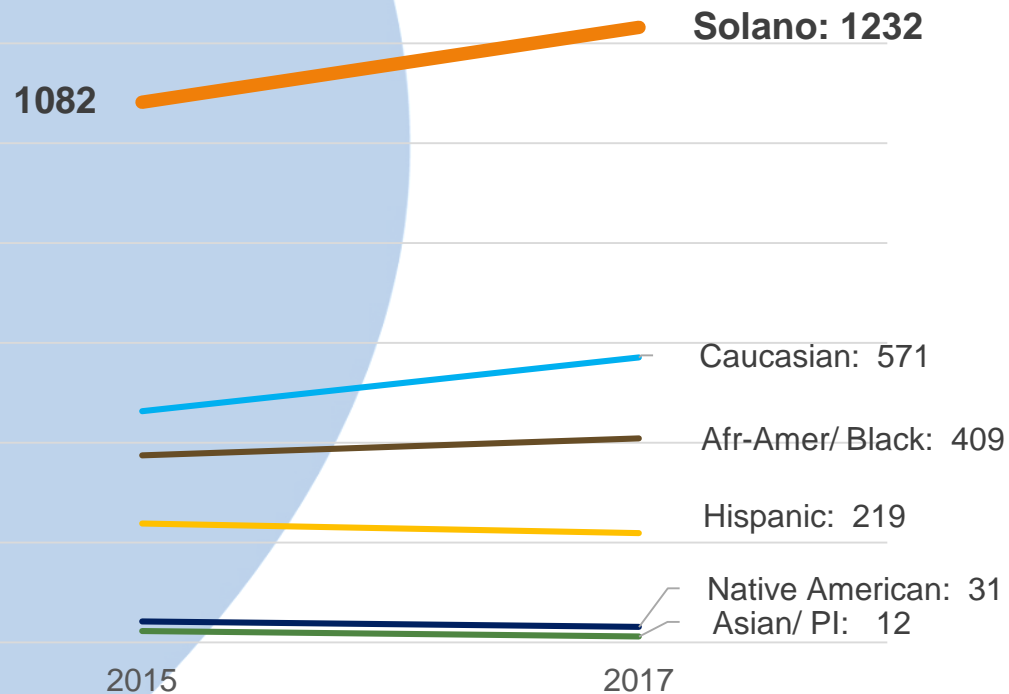


- **Lack of affordable housing stock:**
 - Housing stock reportedly being “taken up” by workers who commute to higher paying Bay Area jobs
 - Barriers cited for building new affordable housing: “Few new developments, and those that are built are market rate.” / “Developers favor single family homes over affordable housing developments.”
- **Lack of supportive housing:**
 - “There’s not enough subsidized housing for the 3,500 mentally ill population... who are hospitalized and then released.”



#3 Top Need: Homelessness

Number of Individuals who are Experiencing Homelessness



- **Need county-wide system of care:**
 - No inventory of housing options available at each stage (at risk of becoming homeless, already homeless, needing shelter, transitional housing, permanent supportive housing)
 - “We need a cohesive strategy at the county level that provides a one-stop shop of resources.” / “One person to call who will bring their team”
- **Need shelter and re-housing options:**
 - Lack of beds: especially for single men, couples, people with pets
 - Lack of transitional housing: “Transitional housing needs to be more robust.”

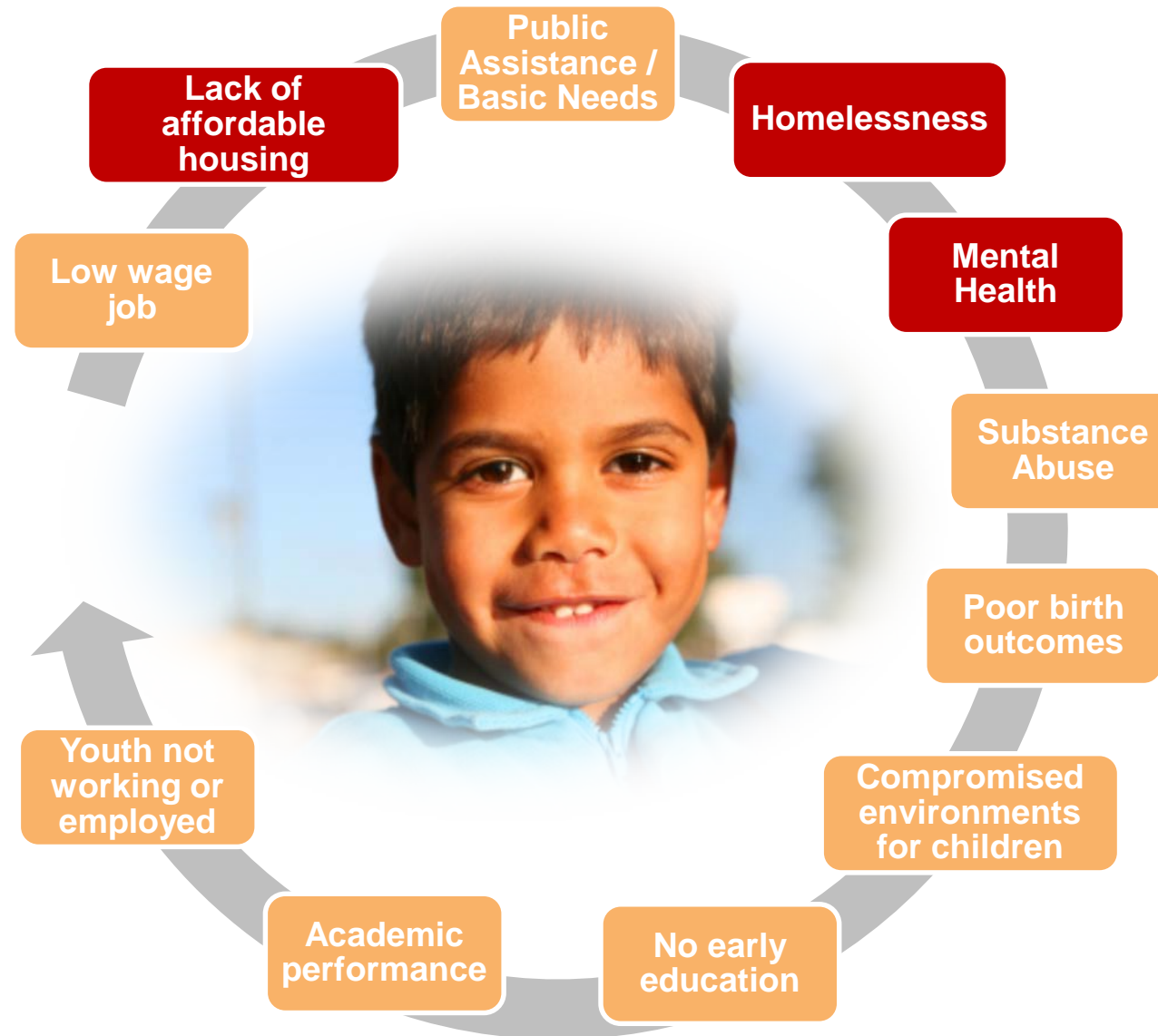
Putting it all back together: Interconnectedness of Priority Needs

Regional economic pressures

- Housing market
- Labor market

Cycle repeats

Youth are not prepared for their future



Onset of chronic stress

Secondary effects on children

Top priority need



Next Steps

- 1. Summarize assets and resources to meet the priority needs**
 - Local promising practices or exemplars
 - Evidence-based models
- 2. Create Outcomes Framework**
- 3. Draft Funding Allocations Strategy**
- 4. Present final report to Board of Supervisors**



Example of Outcomes Framework

Priority Community Need	Community Indicator	Potential Program Strategies	Resources to Leverage	Program Outcome Indicators
Mental Health	% of adults that report mental health impairment (CHIS)	<ul style="list-style-type: none">• Outreach about coverage for mental health	<ul style="list-style-type: none">• County Public Health• Solano Coalition for Better Health• Partnership Health Plan	<ul style="list-style-type: none">• Number of adults receiving outreach• Number of adults receiving publicly funded mental health care
		<ul style="list-style-type: none">• 24/7 crisis support team	<ul style="list-style-type: none">• County Behavioral Health	<ul style="list-style-type: none">• Number of adults responded to by crisis team



Questions?

