

1 NEW SOLANO HUMAN SERVICES AND TRAINING CENTER

EMPLOYMENT & ELIGIBILITY	51,424 NUSF
SPECIAL INVESTIGATIONS BUREAU (SIB)	3,406 NUSF
WORKFORCE INVESTMENT BOARD (WIB)	1,886 NUSF
CHILD SUPPORT SERVICES	16,440 NUSF
BEHAVIORAL HEALTH - CALL CENTER	4,403 NUSF
FUTURE CENTER FOR POSITIVE CHANGE	10,000 NUSF
FUTURE JUVENILE DAY REPORTING	7,000 NUSF
NET USABLE SQUARE FOOTAGE	110,560 NUSF
BUILDING ENVELOPE, CIRCULATION, & MEP	38,696 NUSF
TOTAL GROSS BUILDING:	149,256 GSF

\*Includes training space needed for peak program

2 NEW REGIONAL MENTAL HEALTH BUILDING

BEHAVIORAL HEALTH - CRISIS UNIT	5,981 NUSF
FUTURE REGIONAL MENTAL HEALTH FACILITY	48,750 NUSF
NET USABLE SQUARE FOOTAGE	54,731 NUSF
BUILDING ENVELOPE, CIRC. & MEP	28,274 NUSF
TOTAL GROSS BUILDING:	83,005 GSF

3 NEW HEALTH SERVICES AND CLINIC BUILDING

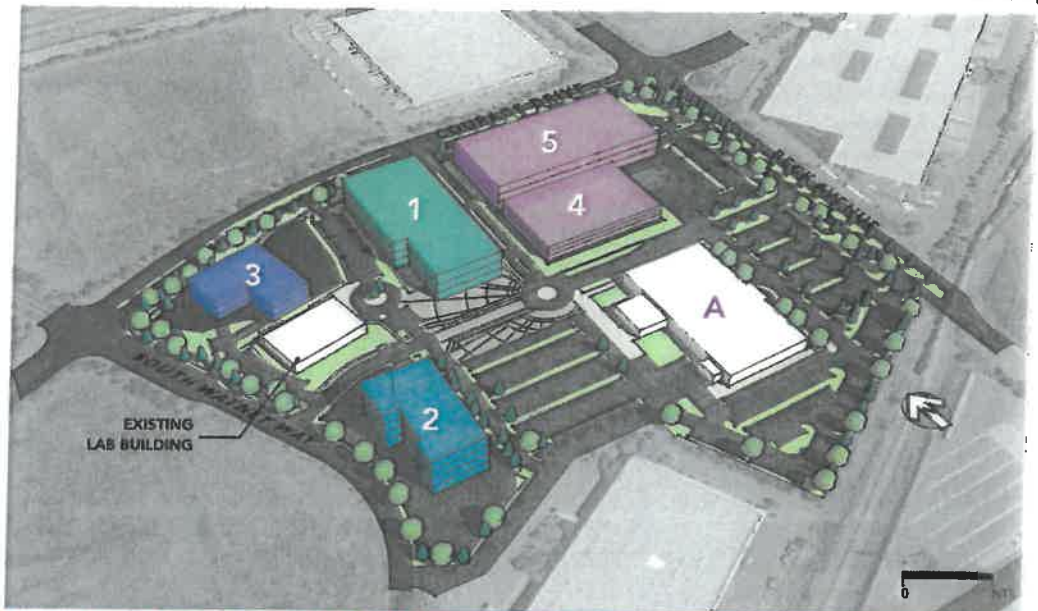
BEHAVIORAL HEALTH - ADULT SERVICES	12,447 NUSF
BEHAVIORAL HEALTH - CALL CENTER	4,403 NUSF
HEALTH SERVICES - ADULT CLINIC (EXPANSION)	9,105 NUSF
HEALTH SERVICES - PEDIATRICS	23,421 NUSF
DENTAL CLINIC	9,840 NUSF
WOMEN, INFANT, CHILDREN (W.I.C.)	3,402 NUSF
BEHAVIORAL HEALTH - CHILDREN'S SERVICES	8,880 NUSF
LOBBY	3,000 NUSF
NET USABLE SQUARE FOOTAGE	74,504 NUSF
BUILDING ENVELOPE, CIRC. & MEP	26,076 NUSF
TOTAL GROSS BUILDING:	100,580 GSF

4 FUTURE PARKING STRUCTURE

NO. OF 2035 PERSONNEL	1,435 PEOPLE
NO. OF PEAK VISITORS	390 PEOPLE
ZONING REQUIRED PARKING SPACES	1,329
NO. OF EXISTING PARKING	926
NO. OF SURFACE PARKING	295
NEW PARKING GARAGE	540
TOTAL FUTURE PARKING:	1,761

5 FUTURE BUILDING

TOTAL GROSS BUILDING:	TBD
-----------------------	-----



+5 years = 2020      +10 years = 2025      +15 years = 2030      +20 years = 2035      Future 2035+

A EXISTING H&SS ADMIN BUILDING  
275 BECK AVE.

H&SS ADMIN DEPARTMENTS	75,280 NUSF
TRAINING SPACE	6,931 NUSF
SHARED SPACE	1,789 NUSF
UNDERUTILIZED SPACE WITHIN BUILDING*	15,317 NUSF
NET USABLE SQUARE FOOTAGE	99,317 NUSF
BUILDING ENVELOPE, CIRC. & MEP	20,315 NUSF
TOTAL GROSS BUILDING:	119,632 GSF

\* Underutilized space within the building includes vacant workstations, storage rooms, or open areas not being used within department suites.

VACANT LAND  
EXISTING PARKING  
LANDSCAPE AREA  
PLAZA AREA  
2035+

Solano Business Park Campus Master Plan - FUTURE