



# Index of Economic and Community Indicators 2025

---

- Economic and Demographic Data
- Policy Uncertainty and Shifting Forecasts



# Thank you!

---

Thank you, Board of Supervisors and County of Solano, for working with EFA on this opportunity again in 2026!

With midterm elections coming and shifting economic and demographic outcomes and policies in 2026, we hope these indicators provide guidance for the County of Solano.



# Macro Overview

- **Mixed year of gains and change, jobs and housing**
  - Jobs growth remains resilient, but unemployment slowly rising
  - Healthcare becoming the current and forecasted center of growth
  - Solano County population fell in 2025, Dixon and Suisun City increased population
  - Macro forecasts: more of a mixed outlook in 2026 than in 2025: geopolitical uncertainty and interest rates rising, jobs and incomes are also
- **Uncertainty and Opportunities to 2030**
  - Energy prices and “K-Shaped” economy
  - Housing markets marginally more affordable in Solano County
  - Healthcare and life sciences remain opportunities
  - Federal spending and investments: Solano County’s role

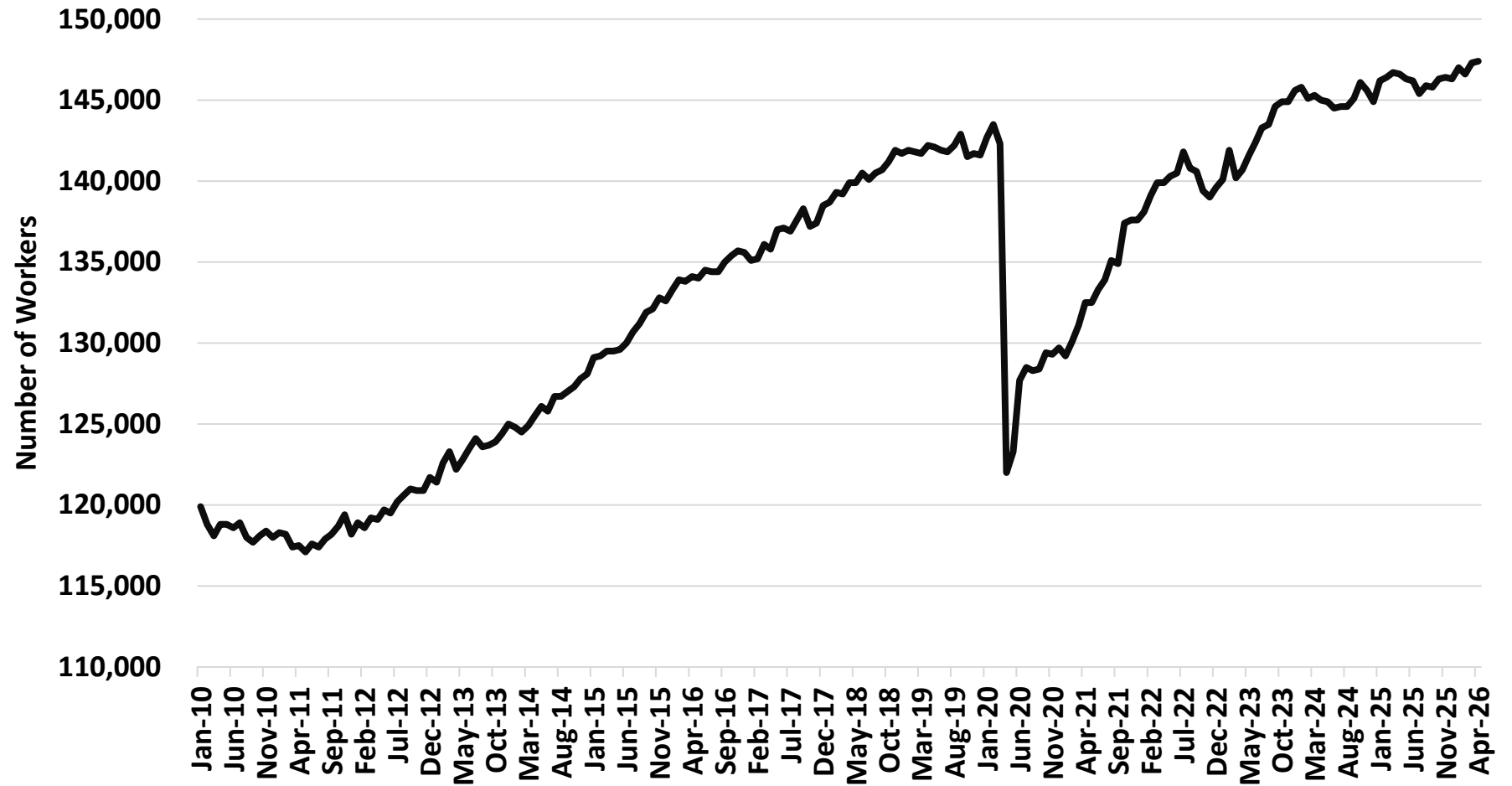


# Solano County Residents and Jobs

Solano County employers hired 147,400 in April 2026, +800 workers

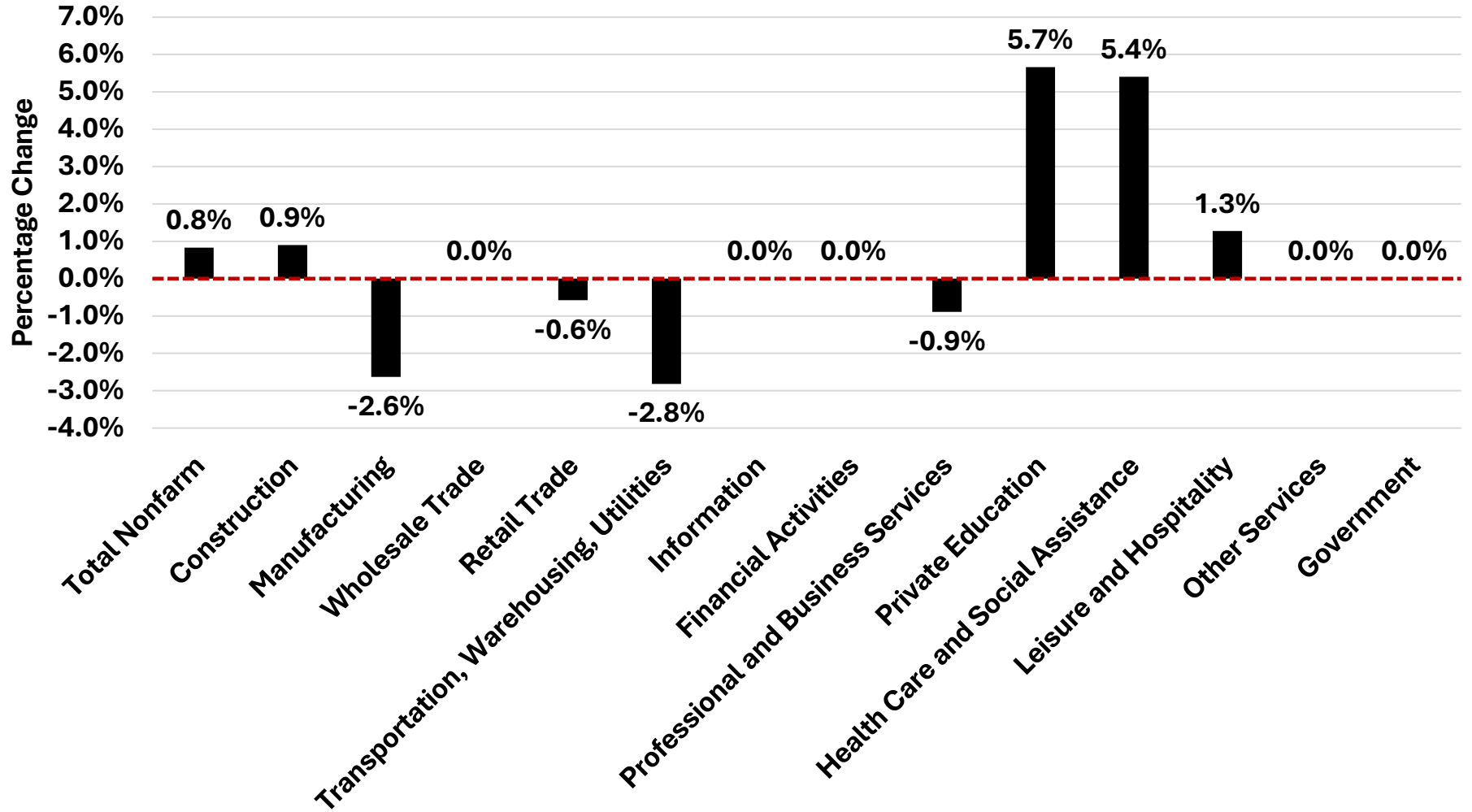
Source: California Employment Development Department (<http://www.edd.ca.gov>)

### Employment Levels, Seasonally Adjusted Jobs at Solano County Employers from January 2010 to April 2026





# Labor Markets, % Jobs Change by Industry, Annual 2024 to Annual 2025



Construction, healthcare, private education) drove 2025 growth

Manufacturing and transportation and warehousing retreated in 2025

Source: California Employment Development Department (<http://www.edd.ca.gov>)

# Personal Income per Person, % Change from Previous Year, 2006 to 2024 (latest data)



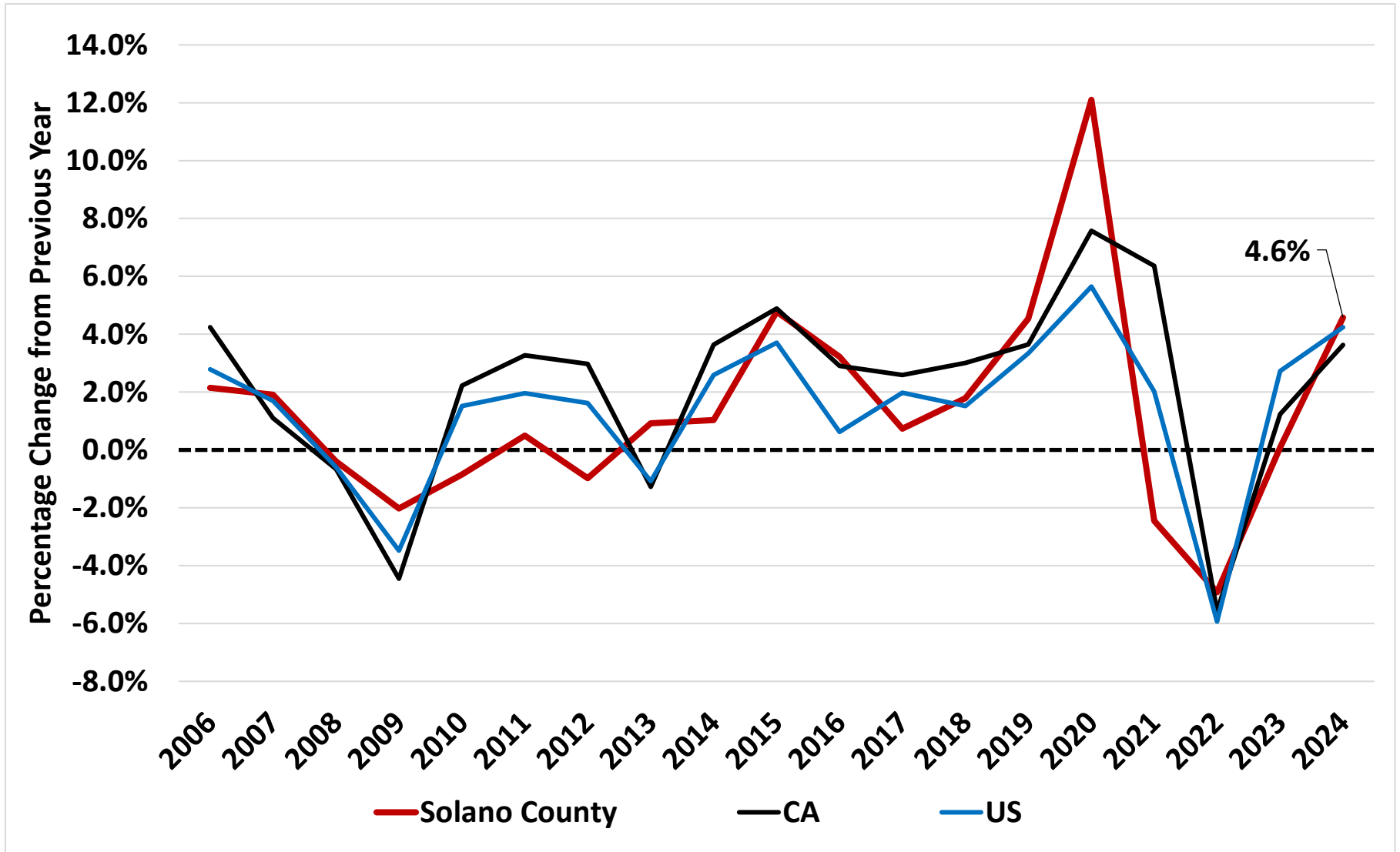
Driving consumer behavior

A function of equity markets and interest rates

Social assistance payments growing as a proportion since 2020

Median Household income down in 2024, poverty rates up slightly

Source: California Employment Development Department (<http://www.edd.ca.gov>)





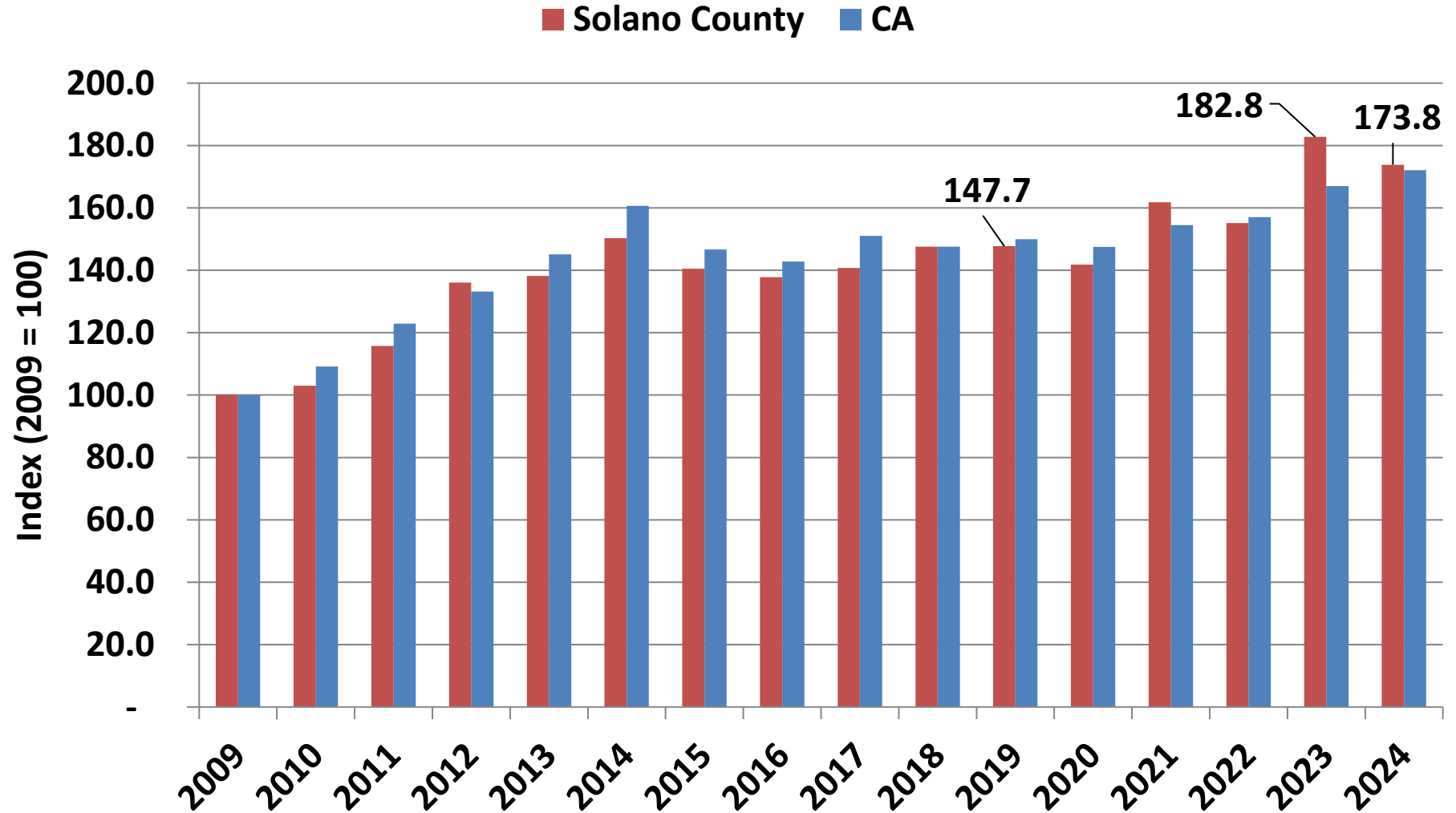
# Agriculture Values, Solano County and California, 2009-24

Values remain elevated from 2019 benchmark and down slightly from 2023 in 2024 outcomes

Almonds, processed tomatoes, cattle, nursery products, wine grapes top five in 2024

2024 the latest data

Source: Solano County Agricultural Commissioner



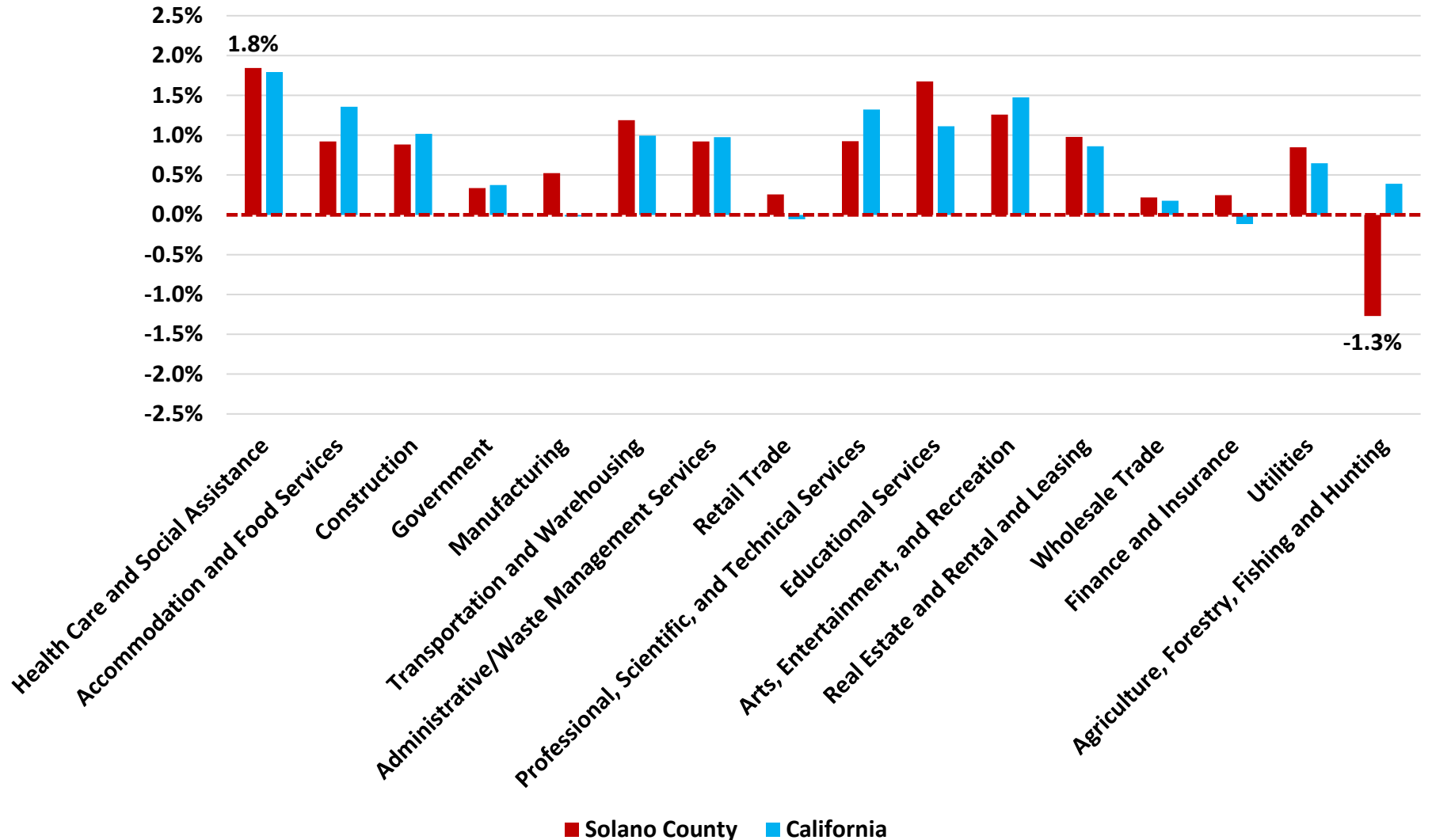


# Hiring Forecast 2026-30 (% Annual Change by Major Industry), Solano County and California

1,282 jobs as an annual average to be hired in Solano County to 2030; ordered in volume of new Solano County jobs

Healthcare, Hotels/Restaurants, Construction, Manufacturing lead private-sector growth

Sources: California EDD ([www.edd.ca.gov](http://www.edd.ca.gov)) and CalTrans ([www.caltrans.org](http://www.caltrans.org))



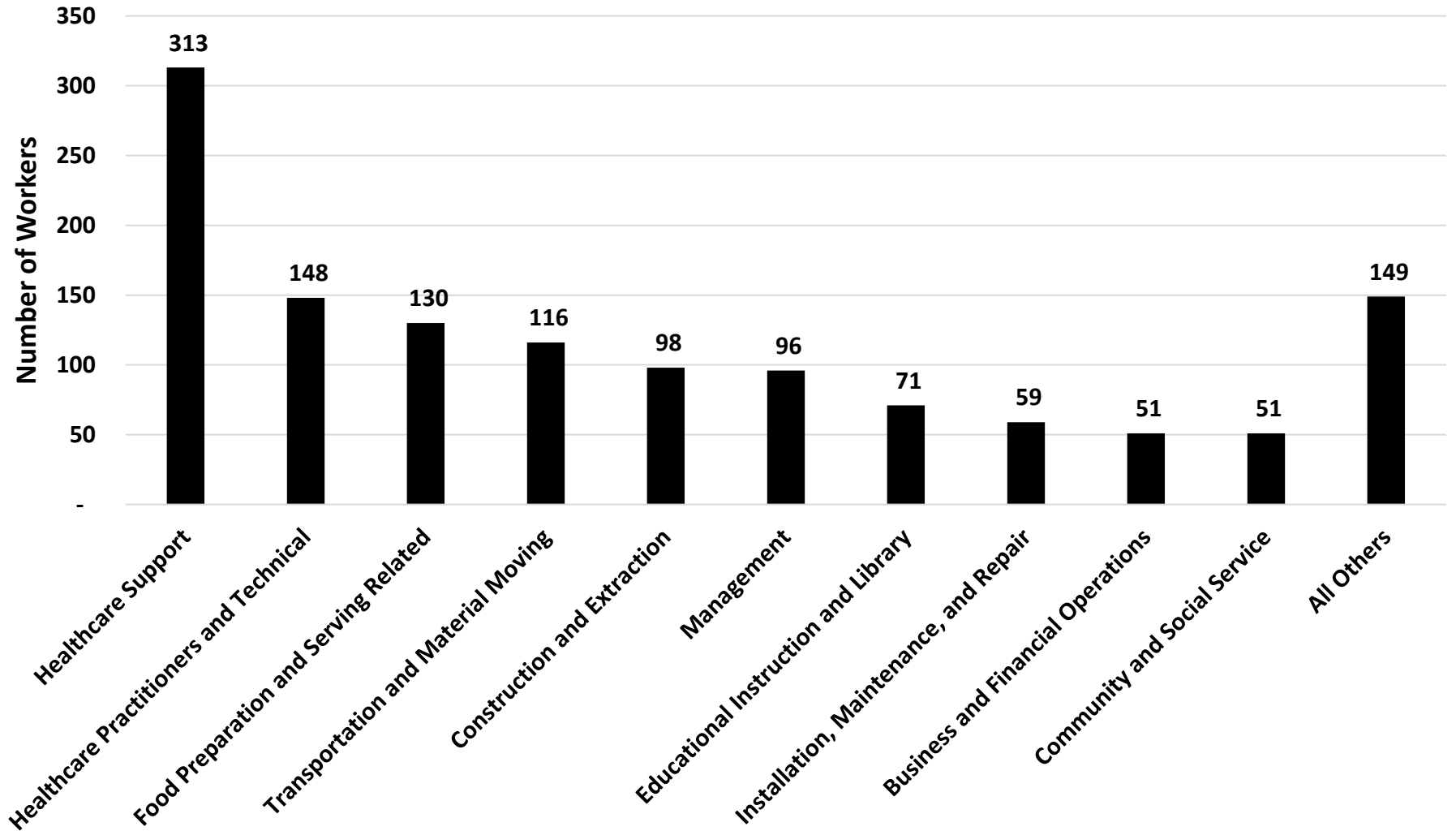


# Occupations Hired, 2026-30 Forecast

## Solano County, Number of Forecasted Workers

These data show the types of jobs workers may be hired to do, regardless of the industry that hires them

May help workforce development, upskilling, and career technical education plan



Sources: California EDD ([www.edd.ca.gov](http://www.edd.ca.gov)), LightCast, EFA Calculations



# Social Equity, 2020, 2023 and 2024

These are five-year averages.

In 2024:

MHI: Gains for African-American households

Poverty: Increased in 2024 data, better for African-Americans in Solano County for 2024, all race/ethnic groups trending up since 2020

Homeownership better for all but Hispanic households

Median wage rising; adjusted for inflation increase is

Metric	2024 Compared to 2020 and 2023	
	2020	2023
<b>For Solano County BIPOC Households</b>		
Median Household Income (MHI) (2017 Dollars)	↔	↓
Poverty Rates (% of population under federal poverty line)	↓	↔
Homeownership (% of households that own home)	↑	↔

Source: Census Bureau

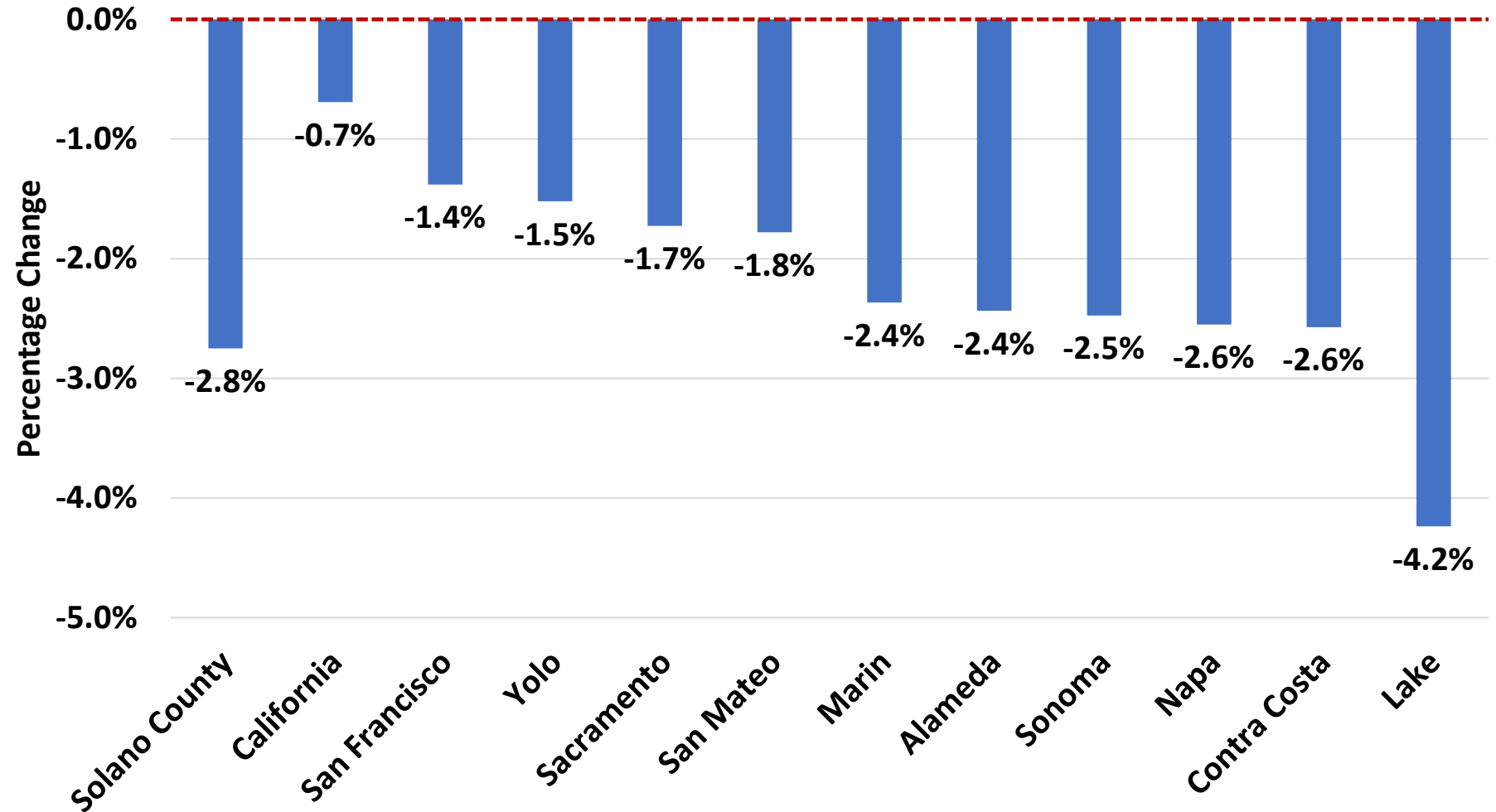


# Housing Forecast, April 2026 to April 2027, % Change in Median Price in Selected Areas

Forecasts continue to be pessimistic, with rates rising slightly

Median home price in Solano County, \$577,800 in Dec 2025, -2.1% from 2024

Median county rent: +\$20/month in 2025



Source: Zillow™ Research  
(<https://www.zillow.com/research/data/>)

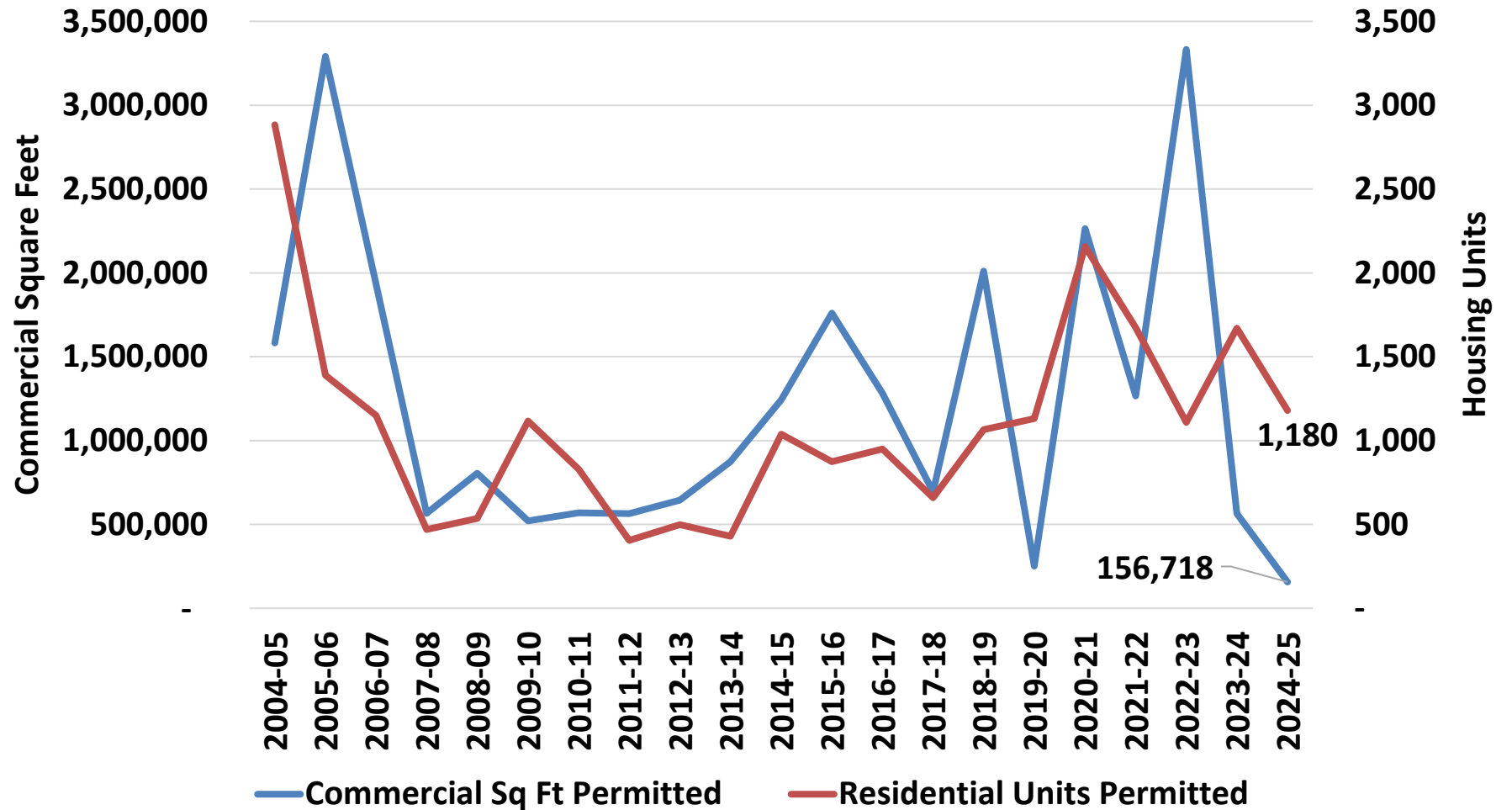


# Building Permits, 2010-2025, Fiscal Years End Housing Units and Comm RE Sq Ft

Slower growth likely a function of economic uncertainty, rising costs.

For commercial spaces, some moderation after quick growth in early 2020s

Housing, slow and steady: 6,440 more units since 2020



Source: California Department of Finance, Reports E-5 and E-8  
<https://dof.ca.gov/forecasting/demographics/estimates/>

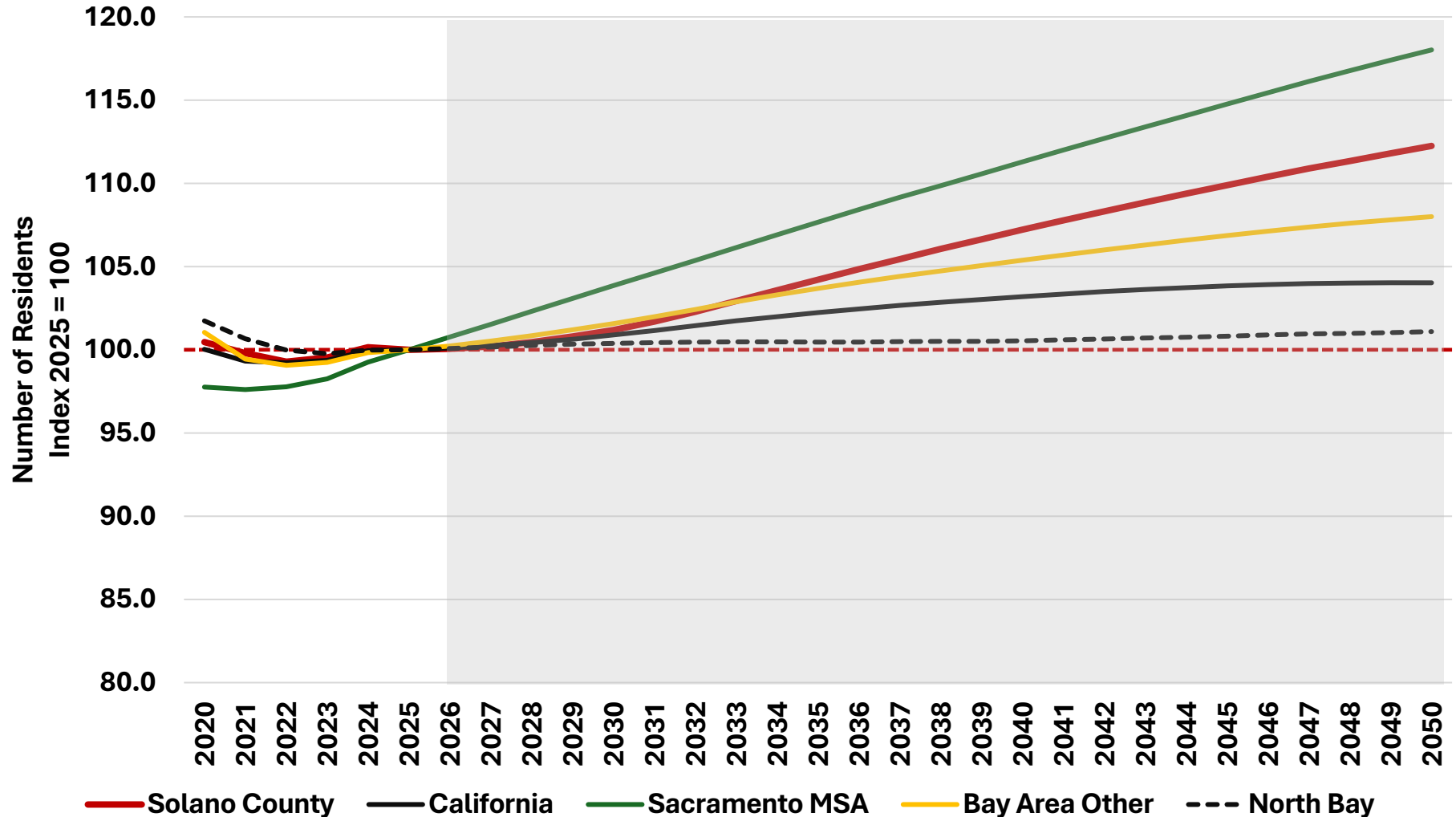


# Population Change: Calendar Year Estimates 2010-25 to 2025, Index 2025 = 100

As of Jan 1, 2026, there are 1,529 fewer people in Solano County when compared to Jan. 1, 2025, a total of 452,050

Forecasts have moderated for Solano County somewhat, but continued growth versus North Bay neighbors

Shaded Area = Forecast



Source: California Department of Finance, Demographics Unit



# 2020s at Midpoint

**QUESTIONS?**  
**Thank you!**

## Some considerations for Solano County:

- Jobs markets have recovered, labor force re-emerging, need regional hiring to continue
- The search for niche: firms investing in Solano County
- Policy uncertainty likely to slow down real investment and need to watch cost of living
- Competition rising east and west, as are opportunities in frontier tech: workforce development watch
- Healthcare to be a major component of the 2026 to 2030 period of jobs growth for Solano County